

## HOW TO PLACE AN OUT-OF-TOWN TELEPHONE CALL



### Dial Operator (Red O) and tell her:

1. The city or town you want.
2. The out-of-town telephone number or the name under which it is listed.

For example:

**"I'm calling Pueblo—3456."**

If you don't know the telephone number just say, for example:

**"I'm calling Pueblo—anyone at Mr. Lowell's residence, 34 Blank Street."**

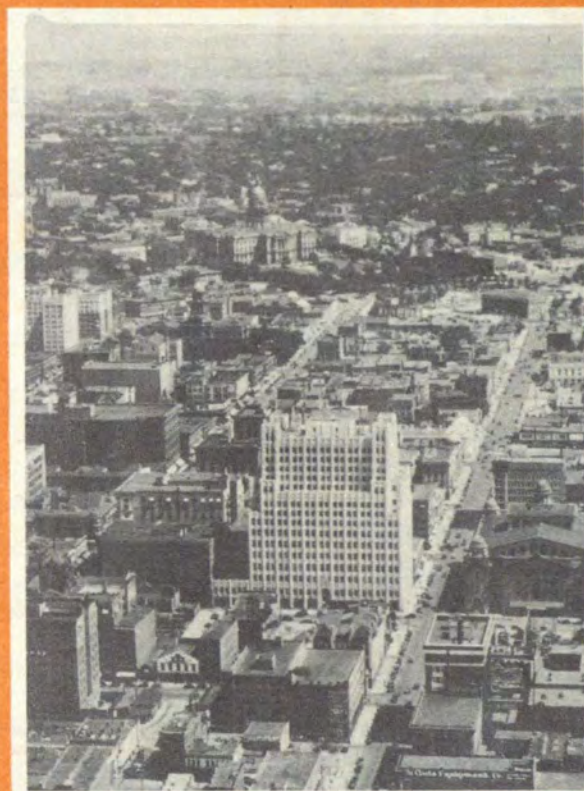
This is a station-to-station call because you have not asked the operator to connect you with a particular person. If you want to reach a particular person give Long Distance the same information as above and the name of the person you want.

**Both station-to-station and person-to-person long distance rates are reduced every night after 7 o'clock and all hours Sundays. The low Sunday rates actually begin at 7 p. m. Saturday and extend to 4:30 a. m. Monday.**

For other information about Long Distance service, please consult the Denver telephone directory.

## INDEXED CITY MAP OF DENVER

Showing Principal Highways  
**PLACES OF INTEREST**  
and  
**LONG DISTANCE  
TELEPHONE RATES**



Aerial view of downtown Denver with Capitol in background and the Telephone Building in the foreground.

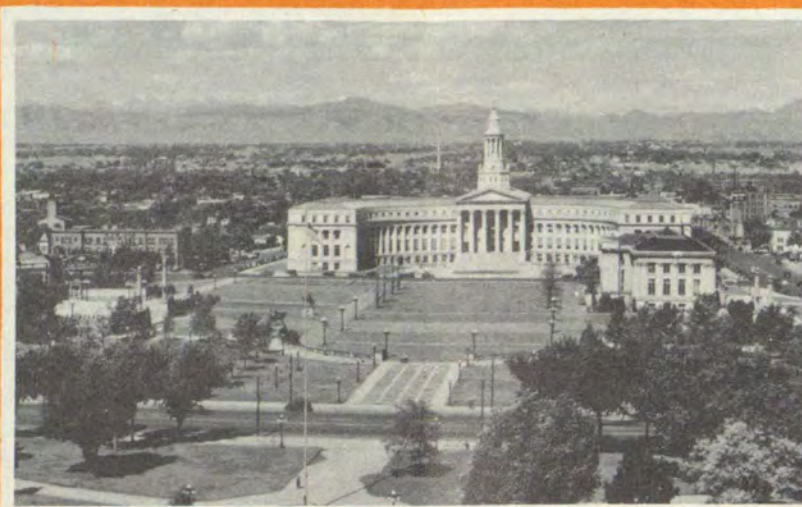
ROCKY MOUNTAIN A A A CLUB

CONTAINING PHOTOGRAPHS OF SOME THINGS WORTH SEEING AS WELL AS A FEW SUGGESTIONS WHICH MAY MAKE YOUR STAY IN DENVER MORE PLEASANT.





STATE CAPITOL



CIVIC CENTER; NEW CITY AND COUNTY BUILDING



PIONEER MONUMENT  
CIVIC CENTER

## POINTS OF INTEREST IN DENVER AND VICINITY

A visit to Denver offers a great variety of beautiful and interesting excursions.

During the summer, Denver and a large area surrounding the city is, literally a garden spot. Visitors who ride through the Parks, along the Boulevards—or along any of Denver's hundreds of residential streets, will never forget the green lawns, the beautiful trees and the extensive gardens. In the winter, it is the hub of a fine winter sports area.

See and enjoy the famous Civic Center, with its Greek Theatre, where summer concerts and forums are held—the Public Library, the City and County Building, the State Capitol and its new annex, exactly one mile above sea level—and across the street the State Historical Museum. West of the city is the new Red Rocks amphitheatre, seating 10,000.

East of the downtown district are Cheesman Park and City Park—the latter including the Colorado Museum of Natural History, the Zoo and several beautiful lakes. In South Denver is Washington Park, with its unparalleled gardens, colorful from April through early October, and further south the campus of the University of Denver. Denver's two famous Amusement Parks, open during the Summer months, will be well worth your visit.

Denver is famous also for its government buildings—the U. S. Mint, the Customs Building, Fitzsimons U. S. General Hospital, Fort Logan and Lowry Field, one of the newest and best equipped Air Corps Technical Schools.

Highways and other travel facilities for trips to the nearby mountains are unexcelled—both long and short trips will be a source of delight.

Denver is noted for its fine accommodations and the hospitality of its people will help make your stay in the city a constant pleasure.



AT ONE OF DENVER'S CITY PARKS



ONE OF DENVER'S FIVE HIGH SCHOOLS



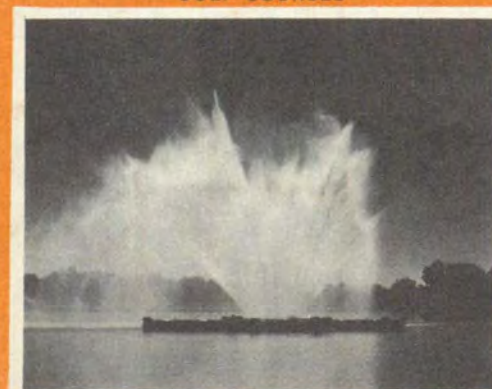
WINTER SPORTS IN DENVER MOUNTAIN  
PARKS



FAMOUS CENTRAL CITY OPERA HOUSE



ONE OF DENVER'S MANY  
GOLF COURSES



ELECTRICALLY LIGHTED FOUNTAIN  
DISPLAY—CITY PARK



Although war activities have caused a substantial increase in the use of certain long distance circuits, we are handling most calls without delay.



For social purposes, Sunday is a good time to call and rates are reduced all day.

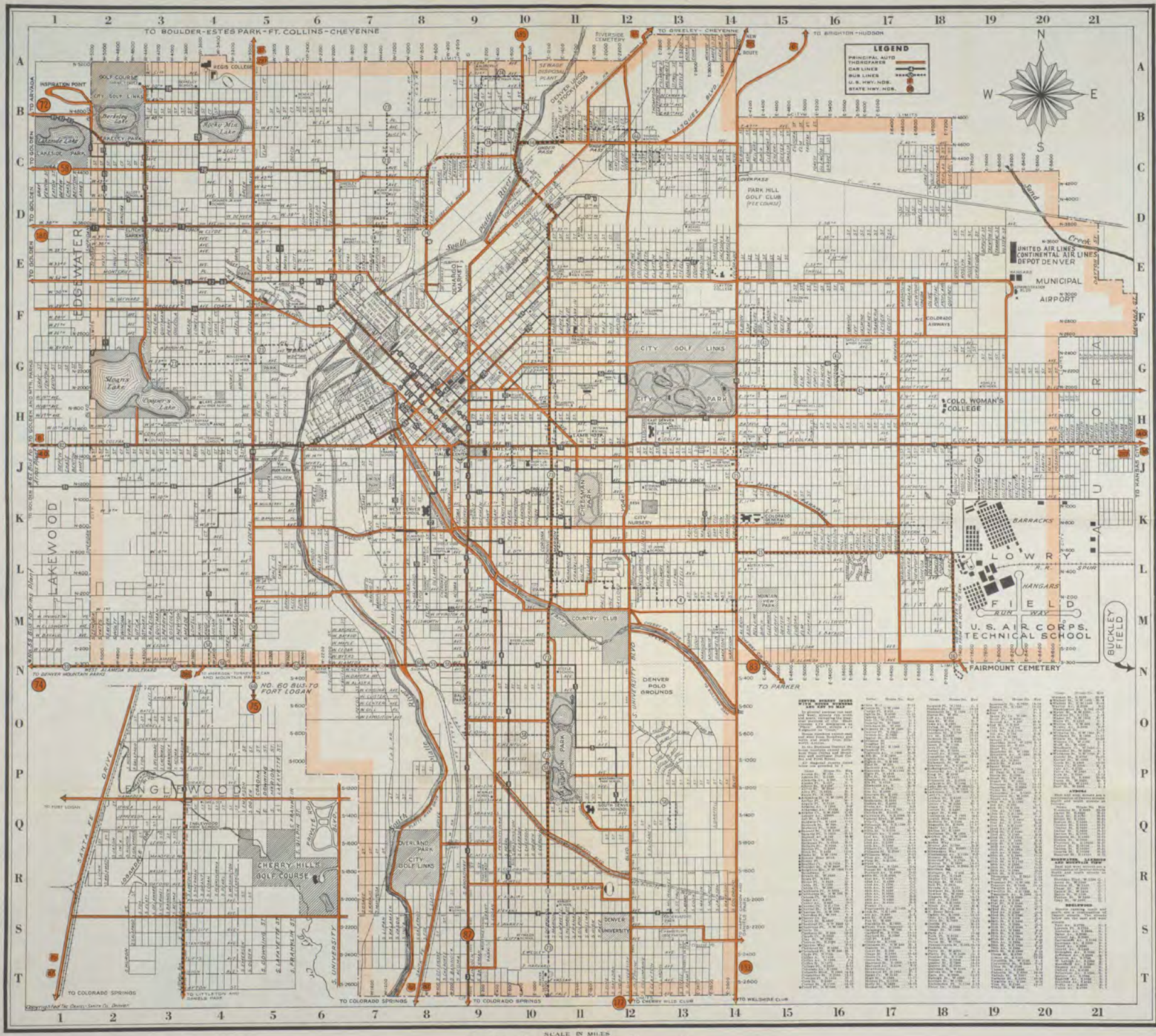
## Here are a few typical telephone rates to Colorado towns.

from <b>DENVER</b> to:	STATION-TO-STATION		PERSON-TO-PERSON	
	Day Except Sunday	Night and Sunday	Day Except Sunday	Night and Sunday
Alamosa .....	\$1.10	\$0.65	\$1.50	\$1.05
Arvada .....	.05	.05	.15	.15
Aspen .....	.75	.45	1.05	.75
Aurora .....	.05	.05	.15	.15
Bailey .....	.35	.35	.50	.50
Boulder .....	.25	.25	.35	.35
Breckenridge .....	.50	.35	.75	.60
Brighton .....	.20	.20	.30	.30
Broomfield .....	.10	.10	.20	.20
Brush .....	.60	.35	.90	.65
Buena Vista .....	.65	.40	.95	.70
Canon City .....	.70	.40	1.00	.70
Castle Rock .....	.25	.25	.35	.35
Central City .....	.25	.25	.35	.35
Colorado Springs .....	.50	.35	.75	.60
Craig .....	1.00	.60	1.35	.95
Delta .....	1.20	.70	1.60	1.10
Durango .....	1.40	.80	1.80	1.20
Englewood .....	.05	.05	.15	.15
Estes Park .....	.45	.35	.65	.55
Evergreen .....	.20	.20	.30	.30
Flagler .....	.75	.45	1.05	.75
Ft. Collins .....	.45	.35	.65	.55
Ft. Lupton .....	.25	.25	.35	.35
Ft. Morgan .....	.55	.35	.80	.60
Frederick .....	.25	.25	.35	.35
Fruita .....	1.30	.75	1.70	1.15
Georgetown .....	.35	.35	.50	.50
Glenwood Springs .....	.90	.55	1.25	.90
Golden .....	.10	.10	.20	.20
Grand Junction .....	1.30	.75	1.70	1.15
Grand Lake .....	.45	.35	.65	.55
Greeley .....	.40	.35	.55	.50
Gunnison .....	.90	.55	1.25	.90
Hazeltine .....	.05	.05	.15	.15
Holly .....	1.25	.75	1.65	1.15

from <b>DENVER</b> to:	STATION-TO-STATION		PERSON-TO-PERSON	
	Day Except Sunday	Night and Sunday	Day Except Sunday	Night and Sunday
Hot Sulphur Springs .....	.55	.35	.80	.60
Hudson .....	.30	.30	.40	.40
Hugo .....	.65	.40	.95	.70
Idaho Springs .....	.25	.25	.35	.35
Julesburg .....	1.10	.65	1.50	1.05
Kiowa .....	.35	.35	.50	.50
Kremmling .....	.60	.35	.90	.65
Lafayette .....	.20	.20	.30	.30
La Junta .....	1.00	.60	1.35	.95
Lakewood .....	.05	.05	.15	.15
Lamar .....	1.10	.65	1.50	1.05
Leadville .....	.60	.35	.90	.65
Littleton .....	.10	.10	.20	.20
Longmont .....	.30	.30	.40	.40
Lookout Mt. ....	.20	.20	.30	.30
Louisville .....	.20	.20	.30	.30
Loveland .....	.40	.35	.55	.50
Monte Vista .....	1.05	.60	1.40	.95
Montrose .....	1.15	.70	1.55	1.10
Morrison .....	.15	.15	.25	.25
Ordway .....	.85	.50	1.20	.85
Pueblo .....	.75	.45	1.05	.75
Rifle .....	1.00	.60	1.35	.95
Rocky Ford .....	.90	.55	1.25	.90
Steamboat Springs .....	.80	.50	1.15	.85
Sterling .....	.75	.45	1.05	.75
Sullivan .....	.05	.05	.15	.15
Telluride .....	1.25	.75	1.65	1.15
Trinidad .....	1.20	.70	1.60	1.10
Walsenburg .....	1.00	.60	1.35	.95
Westwood .....	.05	.05	.15	.15
Wray .....	1.00	.60	1.35	.95

Sunday and night rate reductions apply on all calls when the day station-to-station rate is more than 35 cents. The low rates are in effect all day Sunday and every night after 7 p. m.

**"THE TELEPHONE HOUR,"** popular Bell System radio program, now presents a **GREAT ARTISTS SERIES.** Tune in **KOA** or any NBC red network station **Mondays at 7 p. m.** to hear the world's greatest musical artists



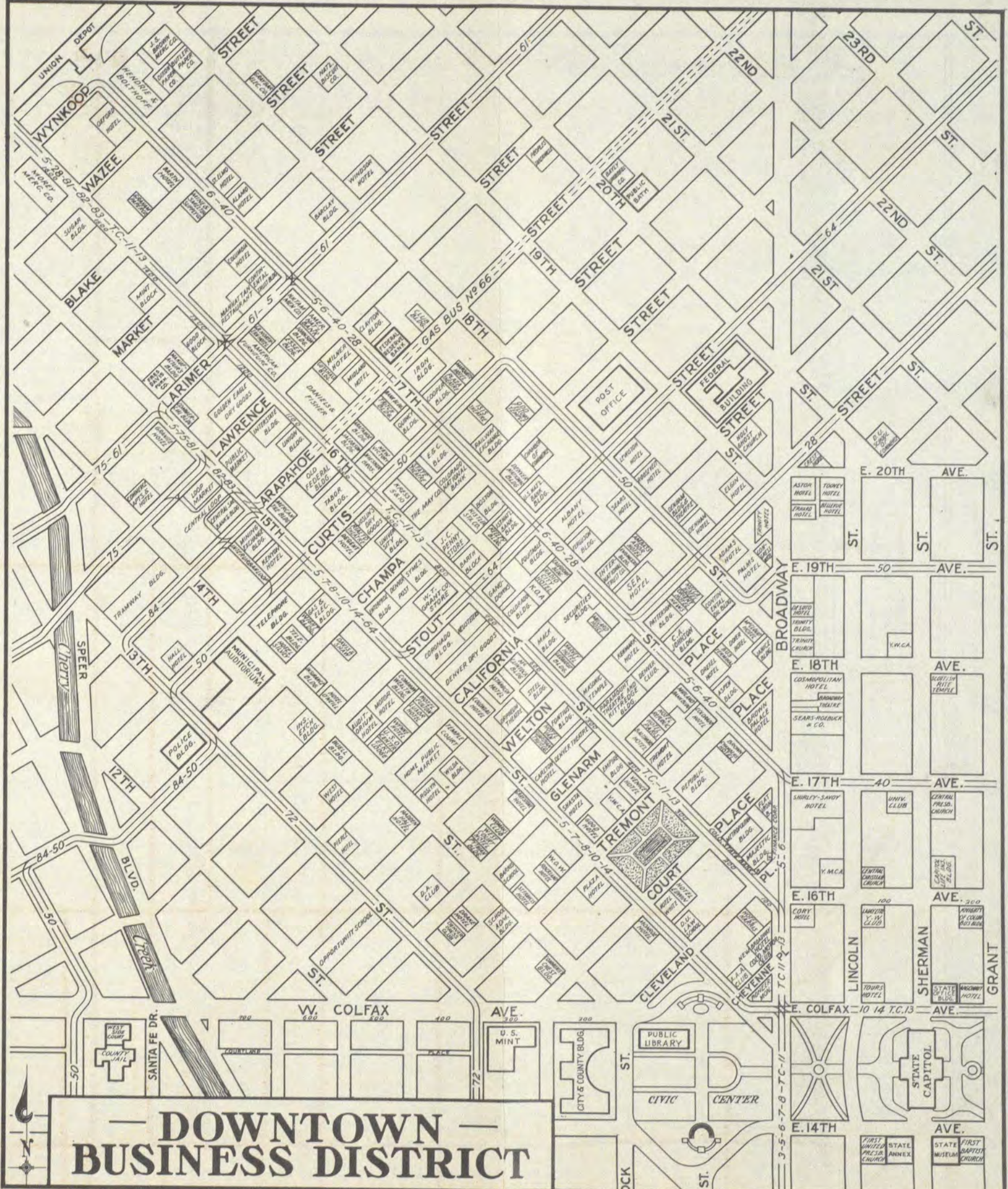
**LEGEND**

- PRINCIPAL AUTO THOROUGHFARE
- GAS LINES
- BUS LINES
- U. S. HWY. NO.
- STATE HWY. NO.



STREET	STREET	STREET	STREET	STREET
1ST ST	1ST ST	1ST ST	1ST ST	1ST ST
2ND ST	2ND ST	2ND ST	2ND ST	2ND ST
3RD ST	3RD ST	3RD ST	3RD ST	3RD ST
4TH ST	4TH ST	4TH ST	4TH ST	4TH ST
5TH ST	5TH ST	5TH ST	5TH ST	5TH ST
6TH ST	6TH ST	6TH ST	6TH ST	6TH ST
7TH ST	7TH ST	7TH ST	7TH ST	7TH ST
8TH ST	8TH ST	8TH ST	8TH ST	8TH ST
9TH ST	9TH ST	9TH ST	9TH ST	9TH ST
10TH ST	10TH ST	10TH ST	10TH ST	10TH ST
11TH ST	11TH ST	11TH ST	11TH ST	11TH ST
12TH ST	12TH ST	12TH ST	12TH ST	12TH ST
13TH ST	13TH ST	13TH ST	13TH ST	13TH ST
14TH ST	14TH ST	14TH ST	14TH ST	14TH ST
15TH ST	15TH ST	15TH ST	15TH ST	15TH ST
16TH ST	16TH ST	16TH ST	16TH ST	16TH ST
17TH ST	17TH ST	17TH ST	17TH ST	17TH ST
18TH ST	18TH ST	18TH ST	18TH ST	18TH ST
19TH ST	19TH ST	19TH ST	19TH ST	19TH ST
20TH ST	20TH ST	20TH ST	20TH ST	20TH ST
21ST ST	21ST ST	21ST ST	21ST ST	21ST ST

SCALE IN MILES



**DOWNTOWN  
BUSINESS DISTRICT**