

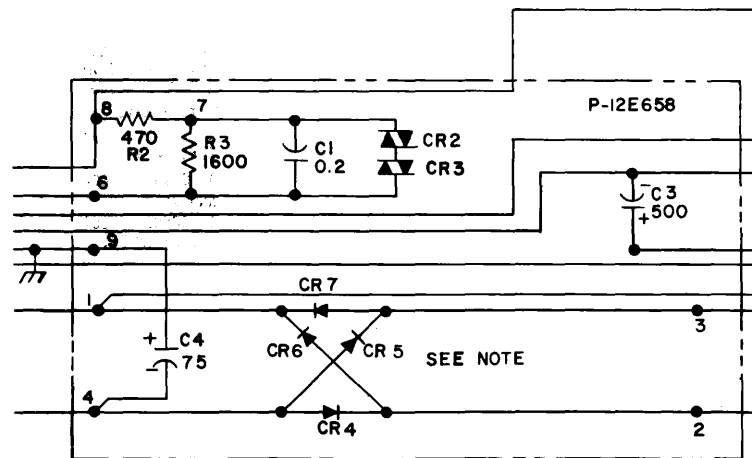
SPEAKERPHONE SYSTEMS— 3 TYPE CONTROL UNITS AND TRANSMITTER UNITS CONNECTIONS

I. GENERAL

1.01 This section shows connections between components in the 3-type speakerphone system.

1.02 This section is being reissued to:

- Add the 51B control unit.
- Add the 666B, 669A, 670A and 671A transmitter.



NOTE: 55A CONTROL UNITS MANUFACTURED BETWEEN APRIL AND OCTOBER OF 1962 ARE PRONE TO NOISE PROBLEMS. THESE CONTROL UNITS WERE WIRED ACCORDING TO FIG. 1A. THESE UNITS SHOULD BE REPLACED WITH CONTROL UNITS WIRED PER FIG. 1. DO NOT MODIFY CONTROL UNIT IN THE FIELD.

Fig. 1A - Modification of P-12E658 Printed Wiring Board

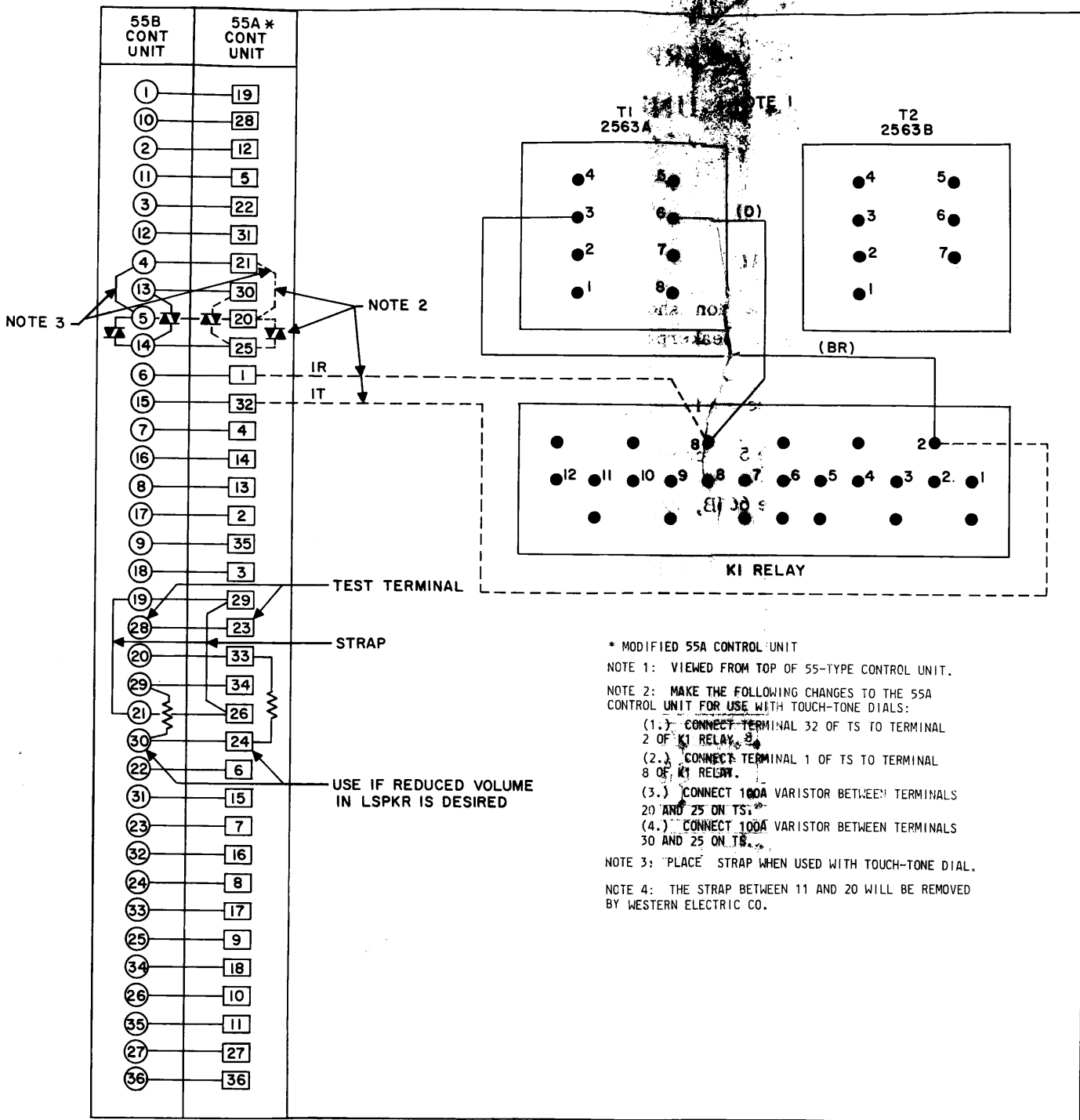


Fig. 1B - Modification of 55A Control Unit for Use with TOUCH-TONE Dial Telephone Sets

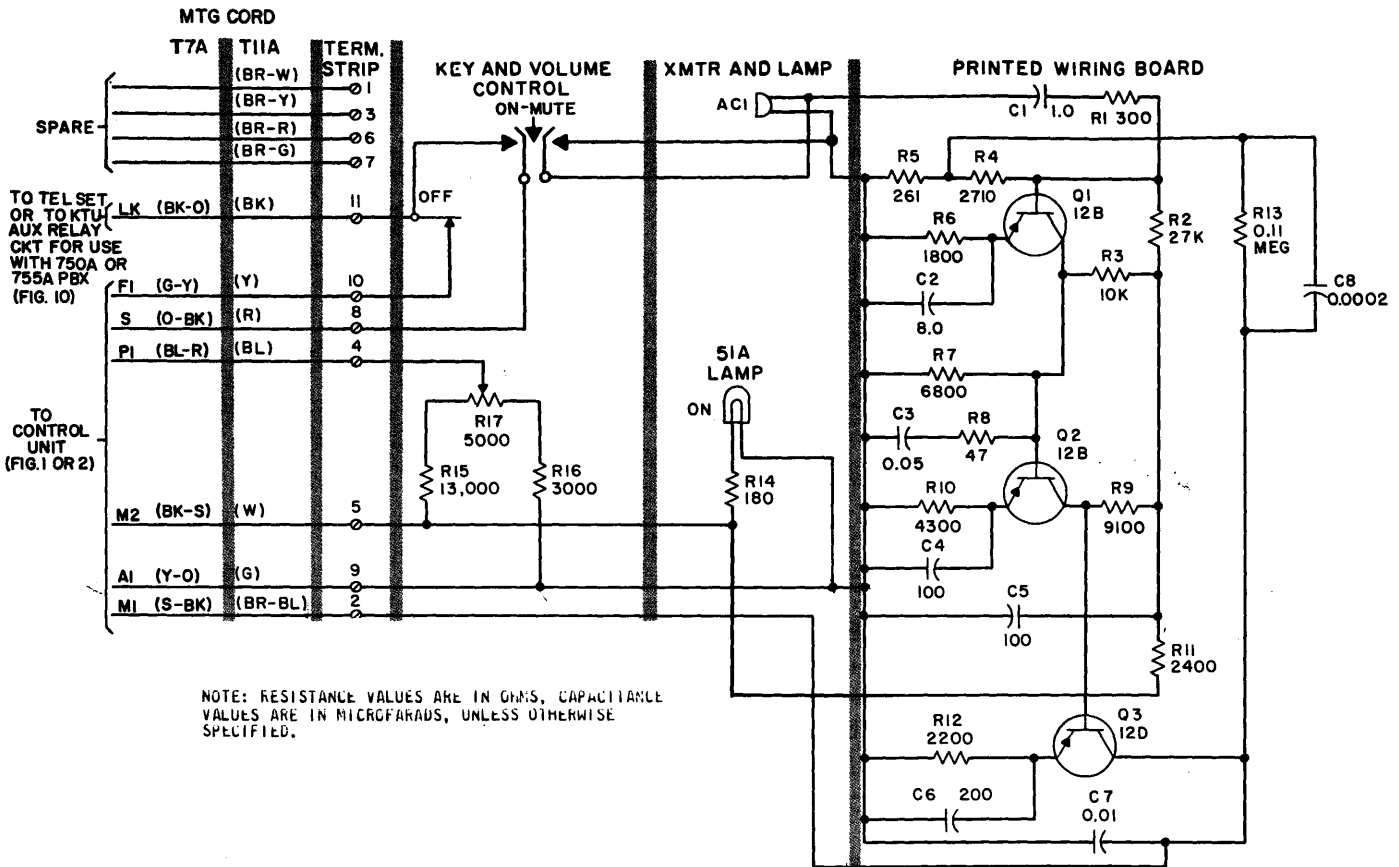
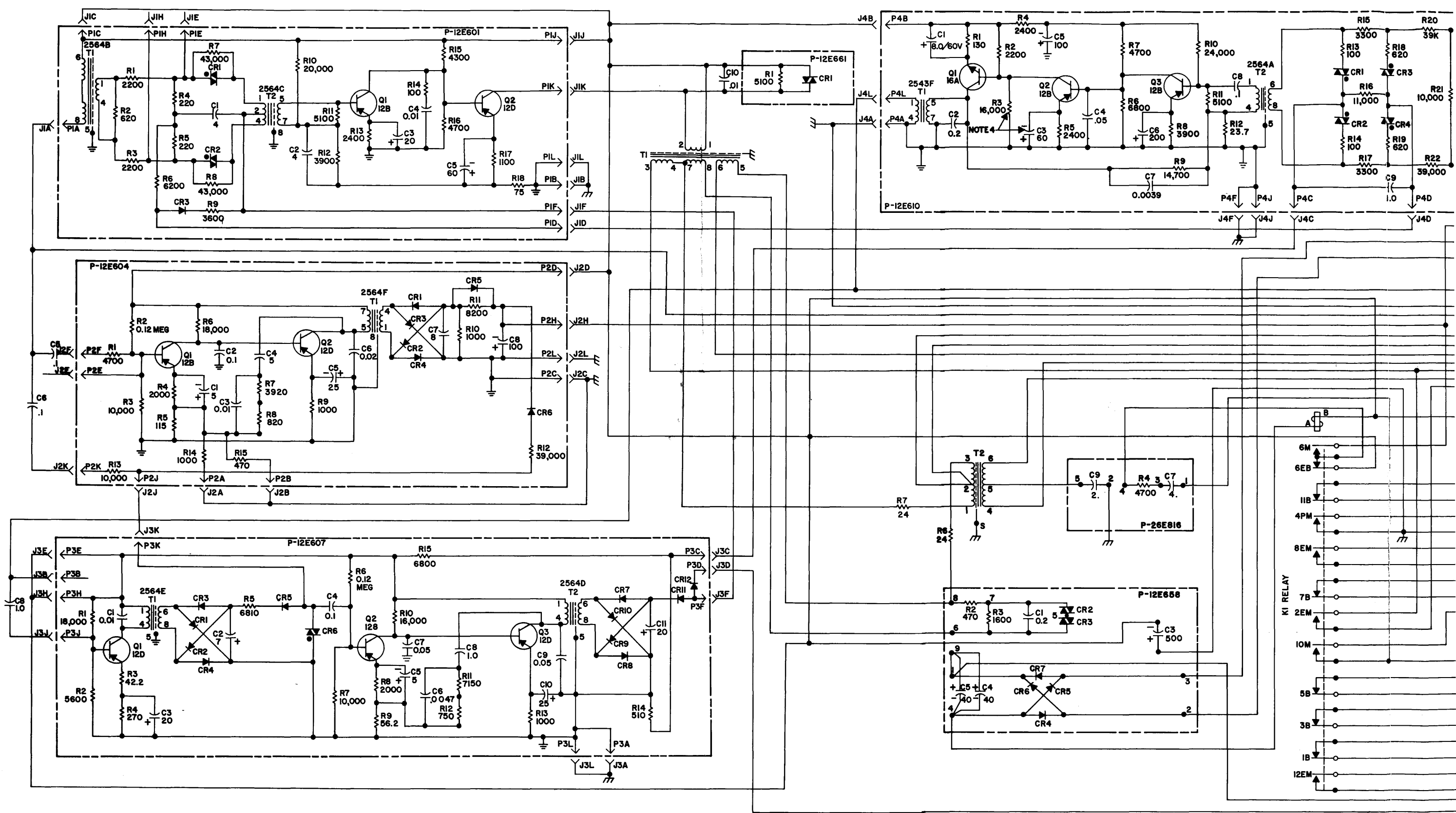


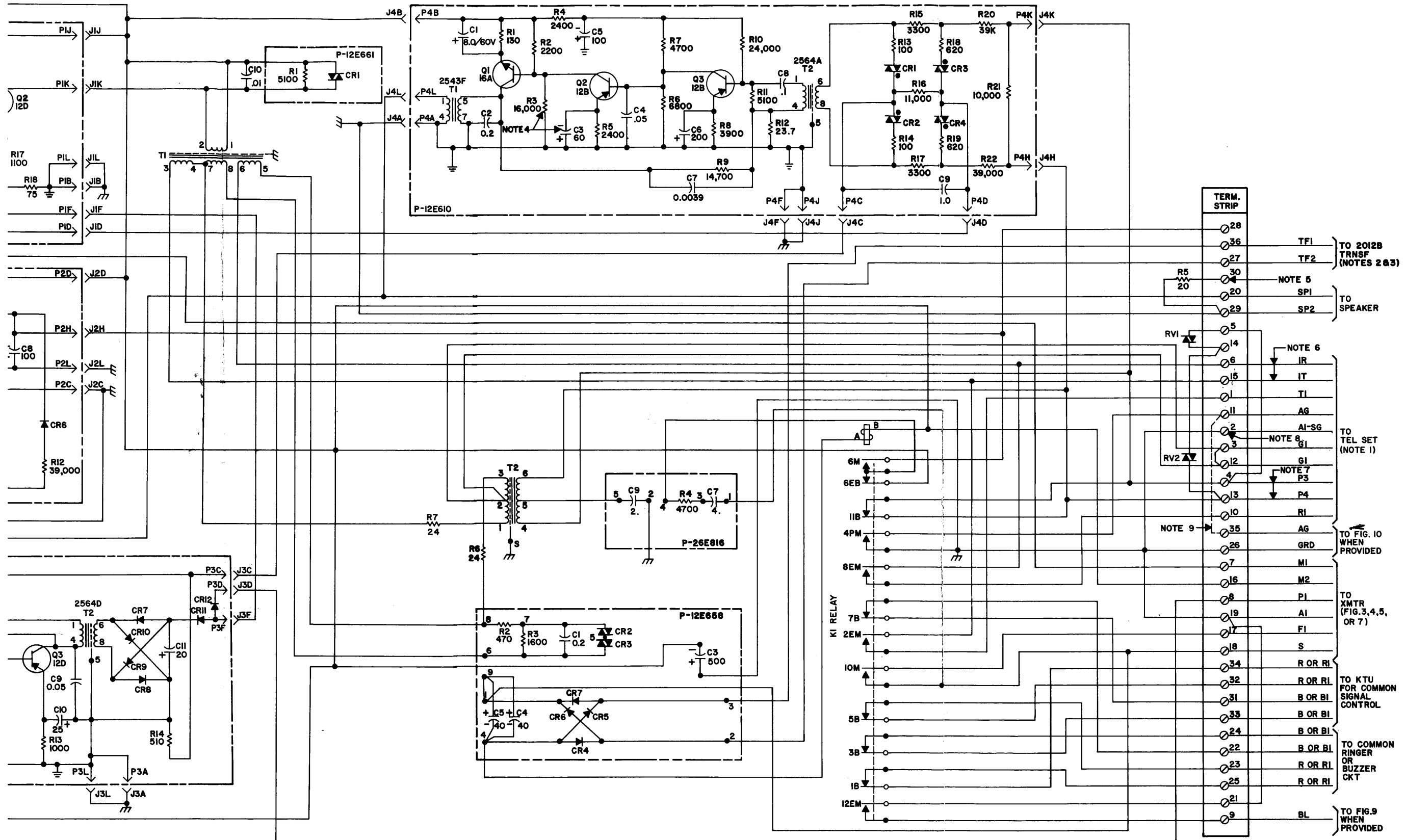
Fig. 3 - 666A Transmitter

INABLE
TRY
LIVE

WL

WL





- NOTE 1: FOR TELEPHONE CONNECTIONS, REFER TO APPROPRIATE SECTION.
- NOTE 2: DUE TO THE LOWER VOLTAGE RATING, THE 2012A TRANSFORMER SHOULD NOT BE USED TO POWER THE 55A CONTROL UNIT.
- NOTE 3: DO NOT USE ANY GROUNDED POWER SUPPLY TO POWER THE 55A CONTROL UNIT, SUCH AS THE 18V AC TAP ON THE 101-TYPE POWER SUPPLY. USE OF A GROUNDED POWER SUPPLY WILL AFFECT OPERATION OF THE UNIT.
- NOTE 4: RESISTANCE VALUES ARE IN OHMS, AND CAPACITANCE VALUES ARE IN MICROFARADS, UNLESS OTHERWISE NOTED.
- NOTE 5: IF REDUCED VOLUME IS DESIRED FROM THE LOUD-SPEAKER, CONNECT SP2 LEAD TO TERMINAL 30.
- NOTE 6: CONNECT TO TOUCH-TONE DIAL TELEPHONE SETS THAT ARE DIALED IN AN "ON HOOK" CONDITION.
- NOTE 7: USE FOR DIAL CLICK SUPPRESSION WITH ROTARY DIAL TELEPHONE SETS THAT ARE DIALED FROM AN "ON HOOK" CONDITION.
- NOTE 8: CONNECT LOCAL GROUND.
- NOTE 9: STRAP 11 TO 35 FOR CONTROL OF AUX RELAY CIRCUIT FOR USE WITH 750A OR 755A PBX.

⊥ INDICATES GROUND STRIP OF PRINTED WIRING BOARD.
 ⏏ INDICATES CHASSIS GROUND.
 ⚡ CRYSTAL (CR-) ORIENTATION MARKS

TERM. STRIP	TERMINAL	DESCRIPTION
	28	TF1
	36	TF2
	27	NOTE 5
	30	SP1
	20	TO SPEAKER
	29	SP2
	5	RV1
	14	NOTE 6
	6	IR
	15	IT
	11	TI
	2	AG
	3	AI-SG
	12	NOTE 8
	1	G1
	13	NOTE 7
	4	P3
	10	R1
	35	AG
	26	GRD
	7	M1
	16	M2
	8	P1
	19	A1
	17	F1
	18	S
	34	R OR RI
	32	R OR RI
	31	B OR BI
	33	B OR BI
	24	B OR BI
	22	B OR BI
	23	R OR RI
	25	R OR RI
	21	TO COMMON RINGER OR BUZZER CKT
	9	BL

Fig. 2 - 55B Control Unit