

SPEAKERPHONE SYSTEM—3-TYPE

2511-TYPE TELEPHONE SETS

CONNECTIONS AND MAINTENANCE

1. GENERAL

1.01 These telephone sets are furnished factory-wired for use with 3-type speakerphone systems. Refer to ♦Division 502♦ for set wiring and ringer connections.

1.02 This section is reissued to:

- Change section reference in 1.01 and 3.01.
- Show 666A transmitter MD, Fig. 1 and 2.

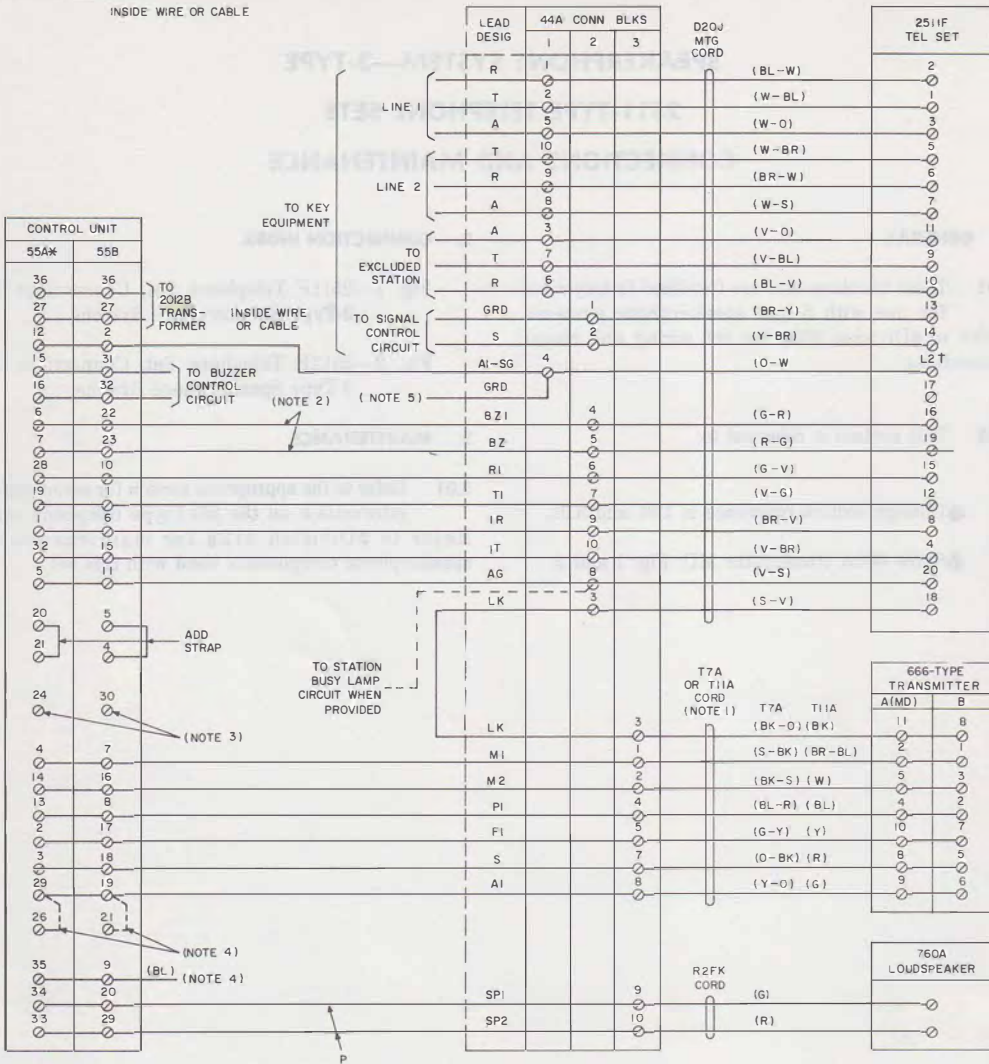
2. CONNECTION INDEX

Fig. 1—2511F Telephone Set, Connections To 3-Type Speakerphone System

Fig. 2—2511H Telephone Set, Connections To 3-Type Speakerphone System

3. MAINTENANCE

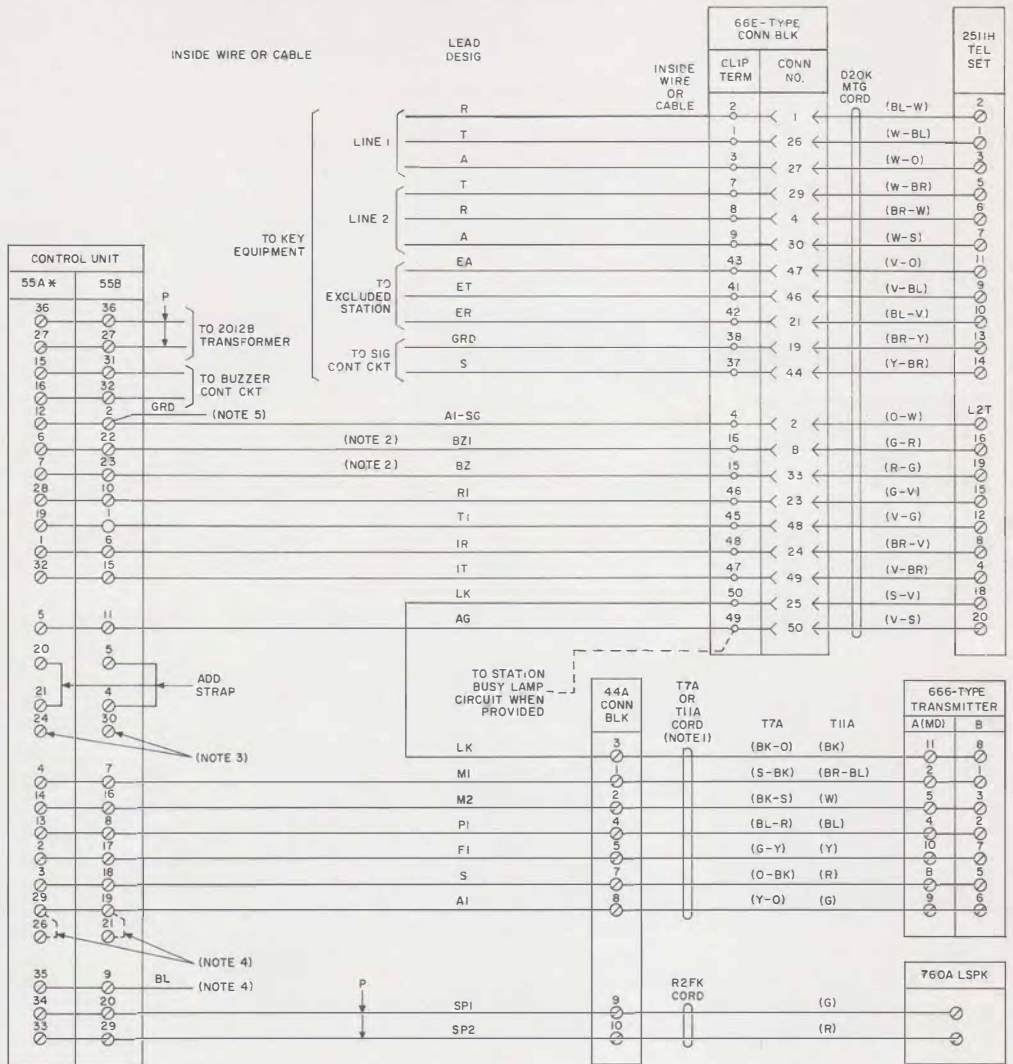
3.01 Refer to the appropriate section for maintenance information on the 2511-type telephone sets. Refer to ♦Division 512♦ for maintenance of speakerphone components used with this set.



NOTES:

1. INSULATE AND STORE UNUSED LEADS OF T11A CORD.
 2. CONNECT AS SHOWN TO SILENCE BUZZER WITH SPEAKERPHONE ON.
 3. IF REDUCED LOUDSPEAKER VOLUME IS DESIRED, CONNECT SP2 LEAD TO TERMINAL 24 (55A) OR 30 (55B).
 4. CONNECT BL LEAD FOR STATION BUSY LAMP CONTROLLED BY 55-TYPE CONTROL UNIT ONLY. ADD STRAP AS SHOWN.
 5. CONNECT TO LOCAL GROUND OR TO AI FOR KTS USE.
- † TERMINAL ON NETWORK
 * 55A CONTROL UNIT MODIFIED BY WESTERN ELECTRIC COMPANY.

Fig. 1—2511F Telephone Set, Connections To 3-Type Speakerphone System



NOTES:

1. INSULATE AND STORE UNUSED LEADS OF T11A CORD.
 2. CONNECT AS SHOWN TO SILENCE BUZZER WITH SPEAKERPHONE ON.
 3. IF REDUCED LOUDSPEAKER VOLUME IS DESIRED, CONNECT SP2 LEAD TO TERM. 24(55A) OR 30(55B).
 4. CONNECT BL LEAD FOR STATION BUSY LAMP CONTROLLED BY 55-TYPE CONTROL UNIT ONLY. ADD STRAP AS SHOWN.
 5. CONNECT TO LOCAL GROUND OR TO AI FOR KTS USE.
- * 55A CONTROL UNIT MODIFIED BY WESTERN ELECTRIC COMPANY.
 † TERMINAL ON NETWORK.

Fig. 2-2511H Telephone Set, Connections To 3-Type Speakerphone System