

INTERPHONE SYSTEM-1A HOME 2511F/H TELEPHONE SET CONNECTIONS AND MAINTENANCE

1. GENERAL

1.01 This section is reissued to change section references in 3.01 and 3.02.

2. CONNECTION INDEX

Table A—2511F/H Telephone Sets, Modifications For 1A Home Interphone

Fig. 2—2511F/H Telephone Sets, Wired For 1A Home Interphone

Fig. 3—2511F Telephone Set, Connections To 1A Home Interphone

Fig. 4—2511H Telephone Set, Connections To 1A Home Interphone

3. MAINTENANCE

3.01 For maintenance of the 2511F/H telephone sets refer to ♦Division 502♦ and to the appropriate section for other individual components.

3.02 For maintenance of the 1A home interphone system refer to ♦Division 512♦.

3.03 Maintenance of the home interphone components (Fig. 1) consists only of replacement of defective components.

3.04 Installation and connections to the set terminal board may require removing the dial to gain access to the terminal board.

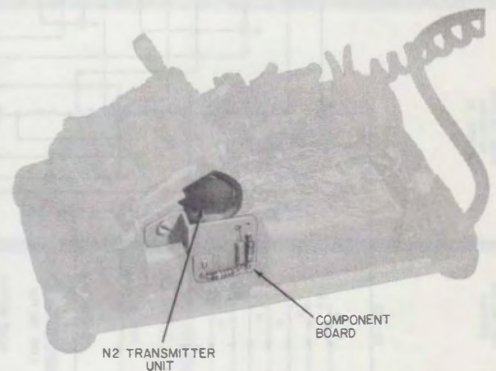


Fig. 1—664E Transmitter, Installed

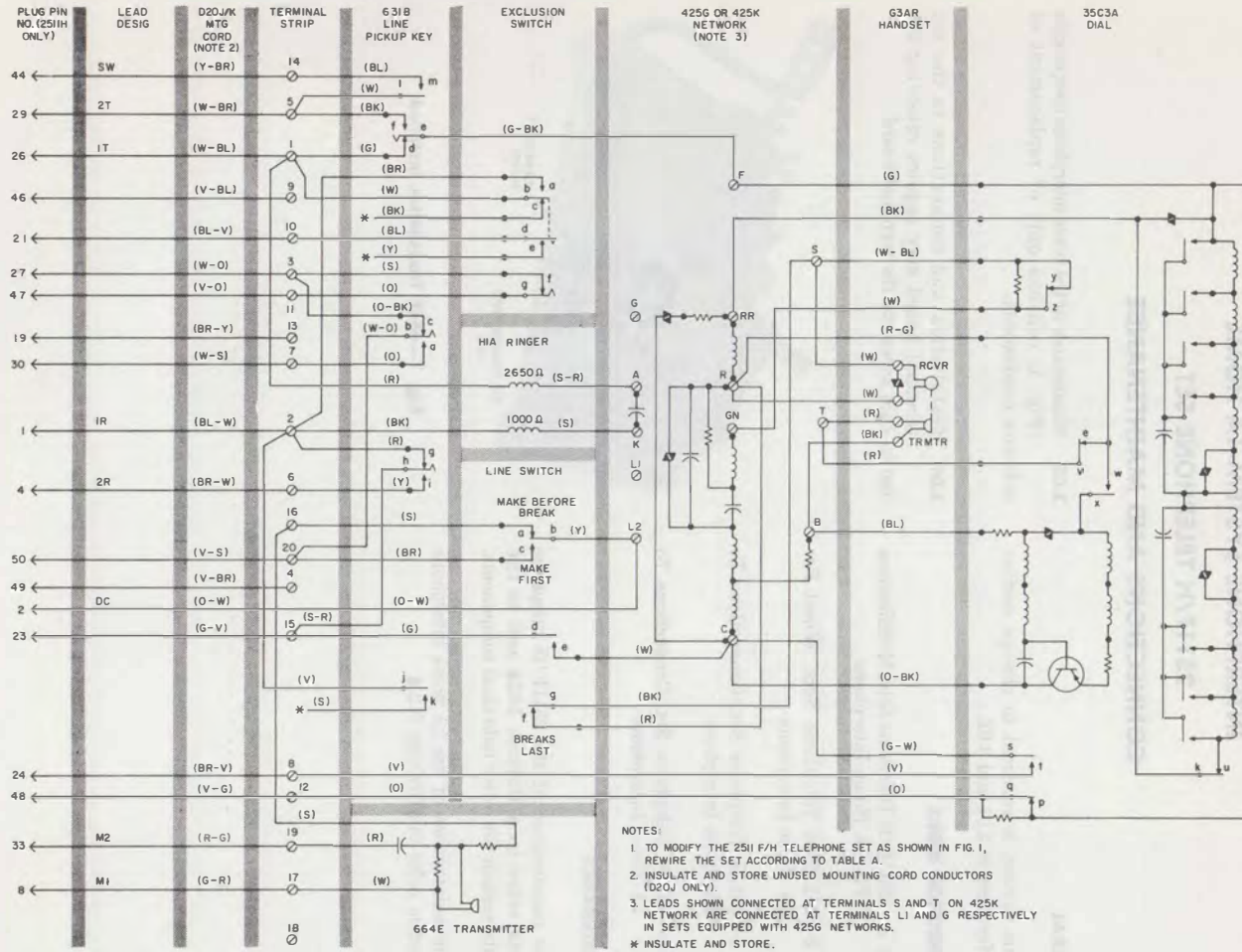


Fig. 2—2511F/H Telephone Sets, Wired For 1A Home Interphone

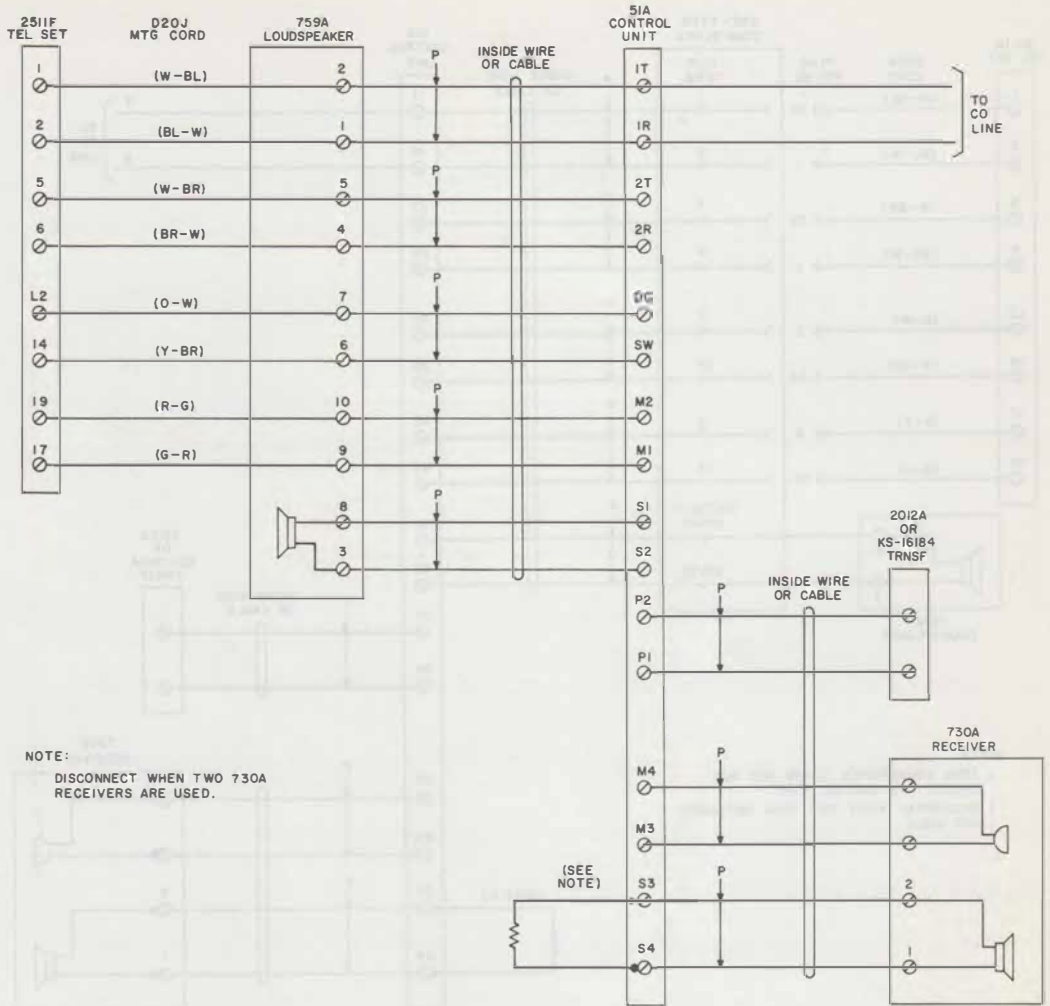


Fig. 3—2511F Telephone Set, Connections To 1A Home Interphone

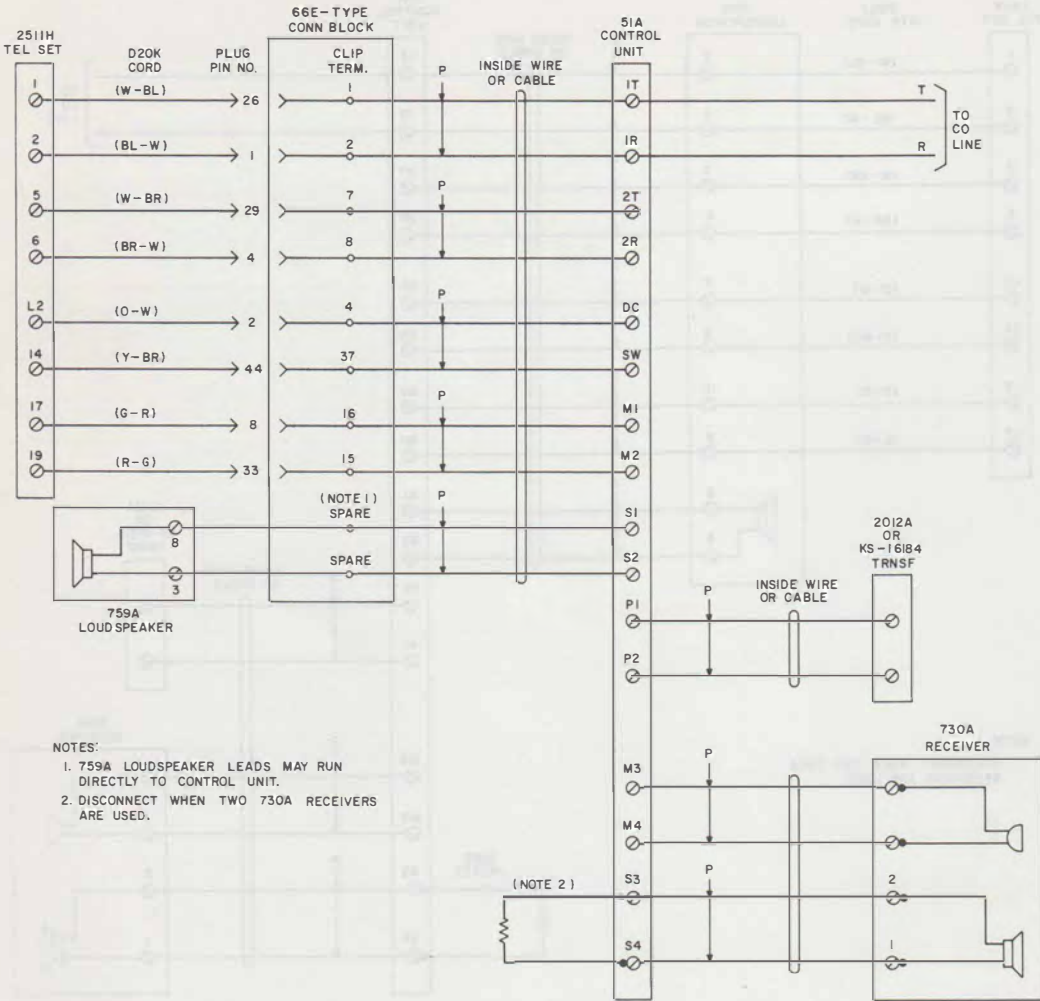


Fig. 4—2511H Telephone Set, Connections To 1A Home Interphone

TABLE A
2511F/H TELEPHONE SETS, MODIFICATIONS
FOR 1A HOME INTERPHONE

WIRE OR LEAD	COLOR	REMOVE FROM	CONNECT TO	INSULATE AND STORE
		TERMINAL STRIP		
Exclusion Switch	BR	10	2	
	W	9	1	
	BK	1		•
	Y	2		•
Pickup Key	S	17		•
	W	13	5	
Line Switch	S	18	16	
664E Transmitter*	S		16	
	R		19	
	W		17	

* Must be ordered separately.