

INTERPHONE SYSTEM—1A HOME

1751-TYPE TELEPHONE SETS

CONNECTIONS AND MAINTENANCE

1. GENERAL

1.01 Operation with the 1A home interphone system requires installation of a 664B transmitter and 761A loudspeaker (ordered separately, Fig. 1).

1.02 This section is reissued to change the section references in 3.01.

2. CONNECTION INDEX

Table A—1751-Type Telephone Set, Conversion For 1A Home Interphone

Table B—Modification For Secretarial Service

Fig. 2—1751-Type Telephone Set (Current Production), Wired for 1A Home Interphone

Fig. 3—1751-Type Telephone Set (Early Production), Wired For 1A Home Interphone

Fig. 4—1751-Type Telephone Set, Connections To 1A Home Interphone

3. MAINTENANCE

3.01 ♦ Refer to Division 502 for maintenance information of the 1751-type telephone sets. Refer to Division 512 for home interphone system installation and maintenance information. ♦

3.02 Maintenance of the home interphone components of these sets (Fig. 1) is limited to replacement of defective units.



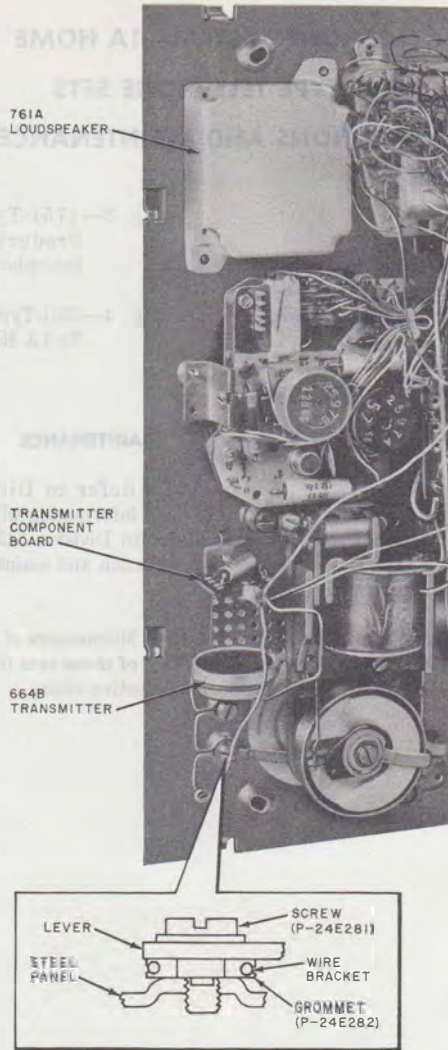


Fig. 1—Home Interphone Components Installed

TABLE A
1751-TYPE TELEPHONE SETS — CONVERSION FOR 1A HOME INTERPHONE

WIRE OR LEAD		REMOVE FROM				CONNECT TO			
		TB1	TB2	NET.	STORED LOCATION	TB1	TB2	NET.	INSULATE AND STORE
Line Switch	(S)							L1	
	(Y)		11				7		
	(BR)			G					*
	(G)			L2				G	
Exclusion or Hold Key	(BR)		9			1			
	(W)		10			2			
	(BK)	2							*
	(Y)	1							*
	(BL)		9						*
	(S)		3						*
	(O)		8						*
584G Line Key	(O)		6						*
	(W-O)			G					*
	(O-BK)		3						*
	(S-R)			L2				G	
	(V)								*
	(S)								*
	(W)		11				5		
	(BL)		7				6		
Ringer	(S-R)			L1				L2	
Strap	(S-R)			L1				L2	
664B† Transmitter	(W)						9		
	(R)						10		
	(S)							L1	
761A† Loudspeaker	(R-BL)						3		
	(BL-R)						8		

* Connect as shown in Table B for secretarial service (answer jack circuit); insulate and store for all other classes of service.

† Order separately.

TABLE B
MODIFICATION FOR SECRETARIAL SERVICE

WIRE OR LEAD*		REMOVE FROM			CONNECT TO	
		TB2	NETWORK	STORED LOCATION	TB1	TB2
584G Line Key	(O)	6				12
	(W-O)		G		2	
	(V)			*	1	
	(S)			*		11

* Connect these leads as shown to provide secretarial service in conjunction with 1A home interphone (Table A). This option can only be provided with individual or bridged ringing.

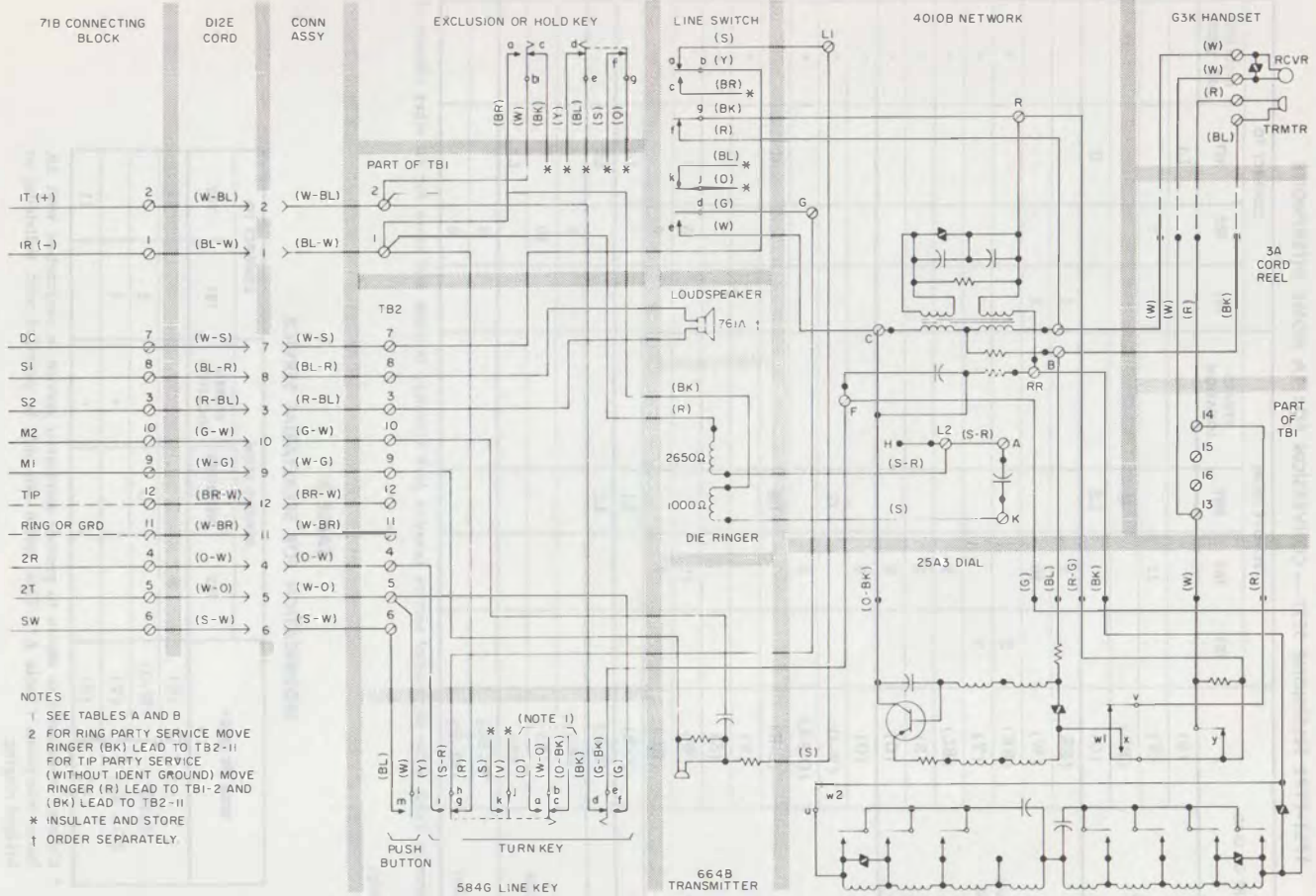
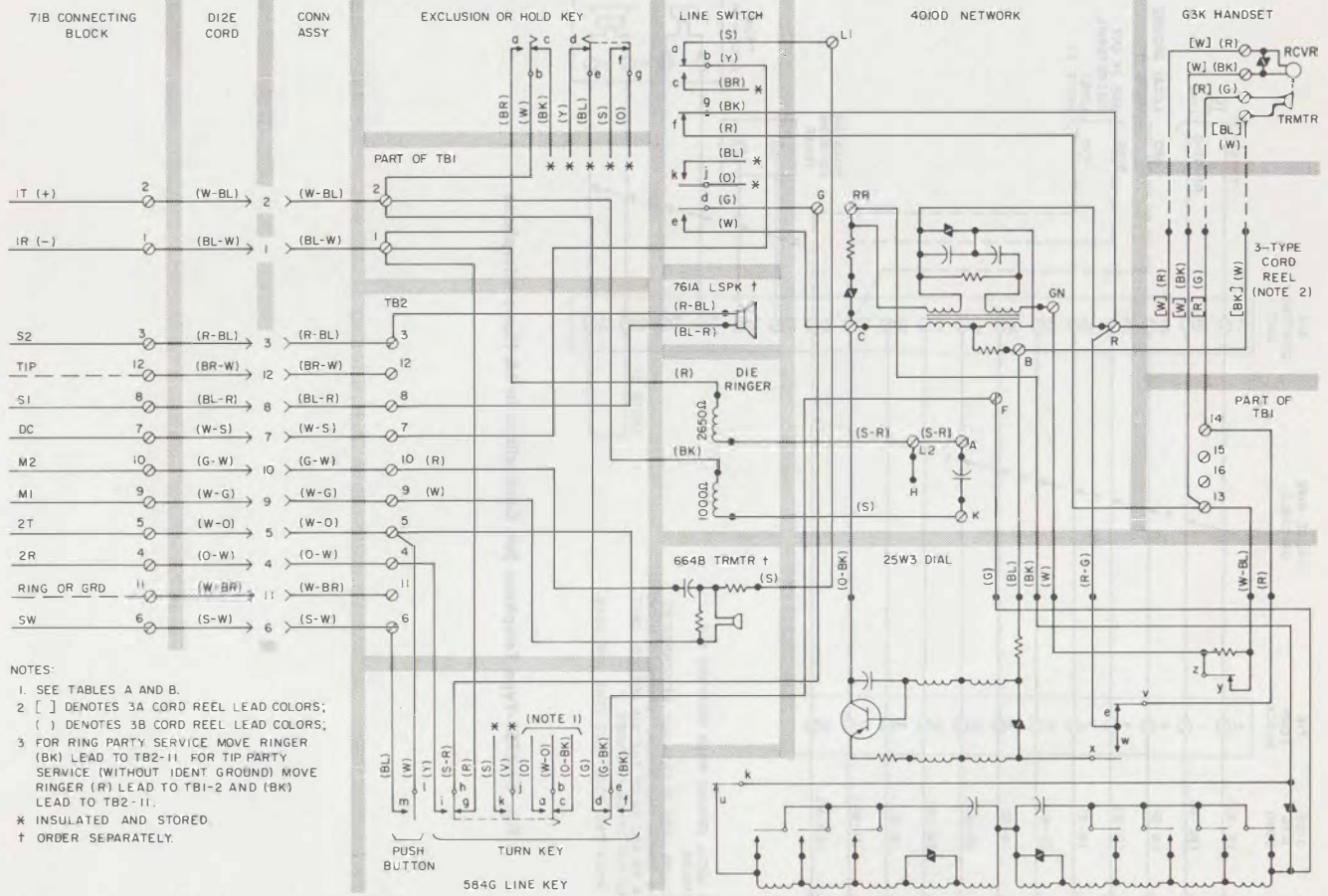


Fig. 2—1751-Type Telephone Set (Current Production), Wired for 1A Home Interphone



- NOTES:
1. SEE TABLES A AND B.
 2. [] DENOTES 3A CORD REEL LEAD COLORS; () DENOTES 3B CORD REEL LEAD COLORS;
 3. FOR RING PARTY SERVICE MOVE RINGER (BK) LEAD TO TB2-11. FOR TIP PARTY SERVICE (WITHOUT IDENT GROUND) MOVE RINGER (R) LEAD TO TB1-2 AND (BK) LEAD TO TB2-11.
- * INSULATED AND STORED.
 † ORDER SEPARATELY.

Fig. 3—1751-Type Telephone Set (Early Production), Wired For 1A Home Interphone

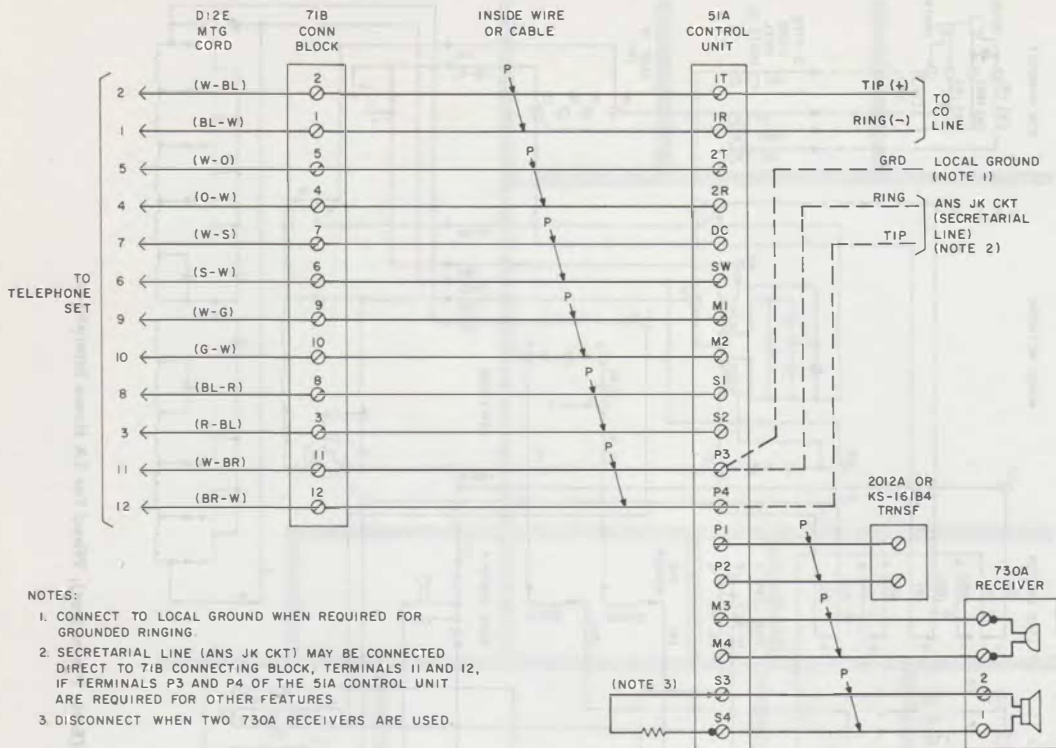


Fig. 4—1751-Type Telephone Set, Connections to 1A Home Interphone