

INTERPHONE SYSTEM — 1A HOME

1511-TYPE TELEPHONE SETS

CONNECTIONS AND MAINTENANCE

1. CONNECTION INDEX

Table A — 1511D Telephone Set, Modifications for 1A Home Interphone

Table B — 1511F/H Telephone Sets, Modifications for 1A Home Interphone

Fig. 1 — 1511D Telephone Set, Modified for Use With 1A Home Interphone

Fig. 2 — 1511F/H Telephone Sets, Modified for Use With 1A Home Interphone

Fig. 3 — 1511D Telephone Set, Connections to 1A Home Interphone System

Fig. 4 — 1511F Telephone Set, Connections to 1A Home Interphone System

Fig. 5 — 1511H Telephone Set, Connections to 1A Home Interphone System

TABLE A

1511D TELEPHONE SET MODIFICATIONS FOR
1A HOME INTERPHONE

ITEM	WIRE OR LEAD	FROM TERM.	TO TERM.
Exclusion Switch (Hold Key)	[R-Y] (Y)	1	*
	[G-Y] (BK)	2	*
	BL	E1	1
	W	E2	2
Line Switch	[S-W] (Y)	7	E1
	S	11	E2
	[S-G] (BR)	9	*
	Strap		4 to 7
664E Trmtr	R		10
	W and Bracket		9
	S		E2
Dial	[V-V] (V)	12	*

- * Insulate and store.
- () Current color code
- [] MD color code

TABLE B

1511F/H TELEPHONE SETS, MODIFICATIONS FOR
1A HOME INTERPHONE

ITEM	WIRE OR LEAD	REMOVE FROM	CONNECT TO
Exclusion Switch (Hold Key)	(BR)	10	2
	(W)	9	1
	(BK)	1	*
	(Y)	2	*
Line Key	(S)	17	*
	(W)	13	5
Line Switch	(S)	18	16
664E Trmtr	(S)		16
	(R)		19
	(W)		17

- * Insulate and store.

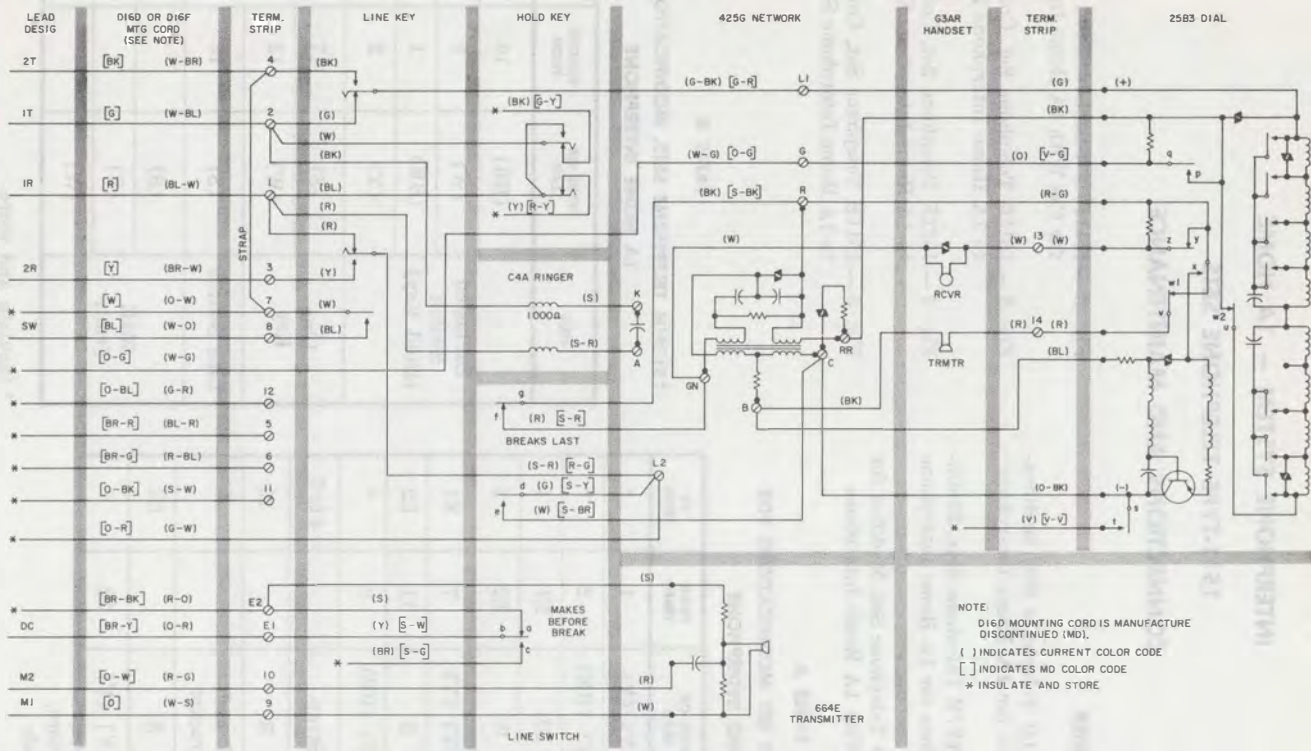
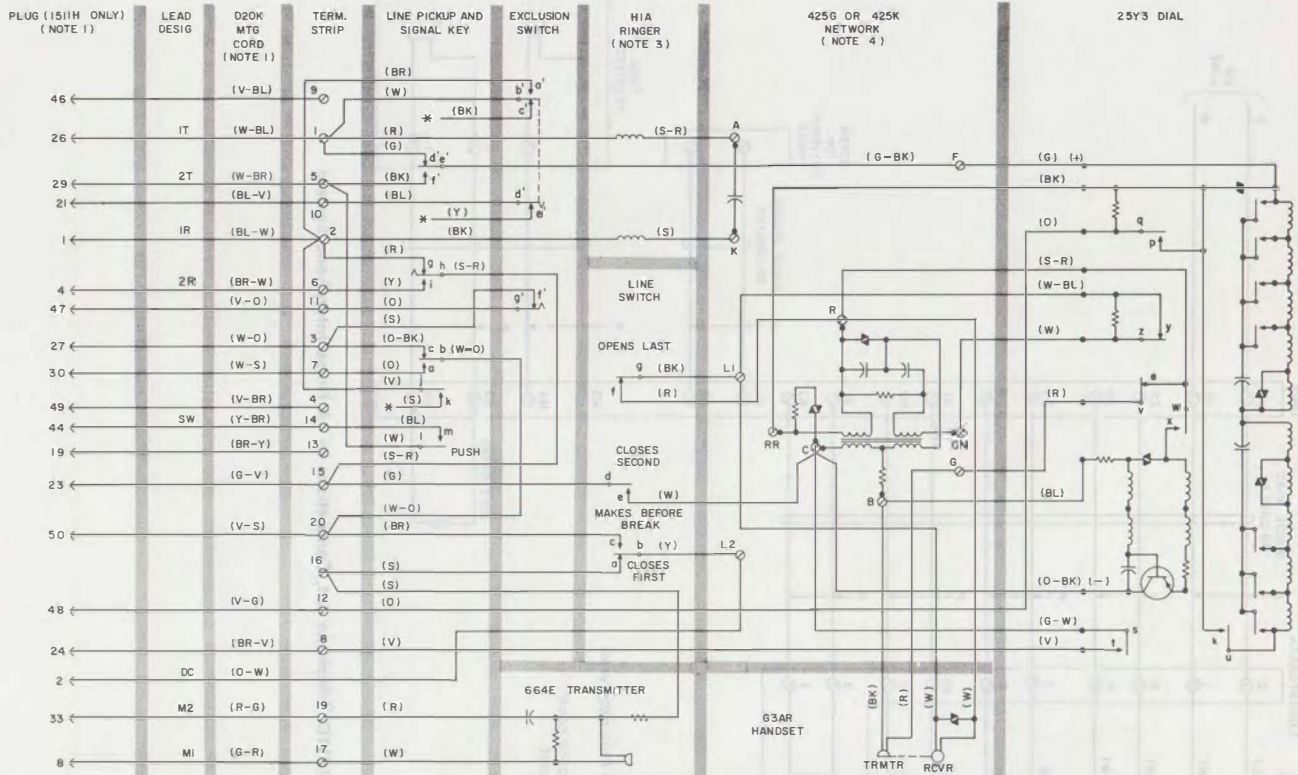


Fig. 1—1511D Telephone Set, Modified for Use With 1A Home Interphone



NOTES:

1. 1511F TELEPHONE SET IS IDENTICAL EXCEPT EQUIPPED WITH D20J SPADE-TIPPED MOUNTING CORD.
2. TO MODIFY THE 1511F OR 1511H TELEPHONE SET AS SHOWN, REWIRE THE SET ACCORDING TO TABLE B.
3. TO SILENCE RINGER PERMANENTLY; REMOVE, INSULATE, AND STORE THE (BK) RINGER LEAD.
4. ON THE 425K NETWORK, THE LEADS TERMINATED ON THE L1 AND G TERMINALS ARE TERMINATED ON TERMINALS S AND T, RESPECTIVELY.

* INSULATE AND STORE

Fig. 2—1511F/H Telephone Sets, Modified for Use With 1A Home Interphone

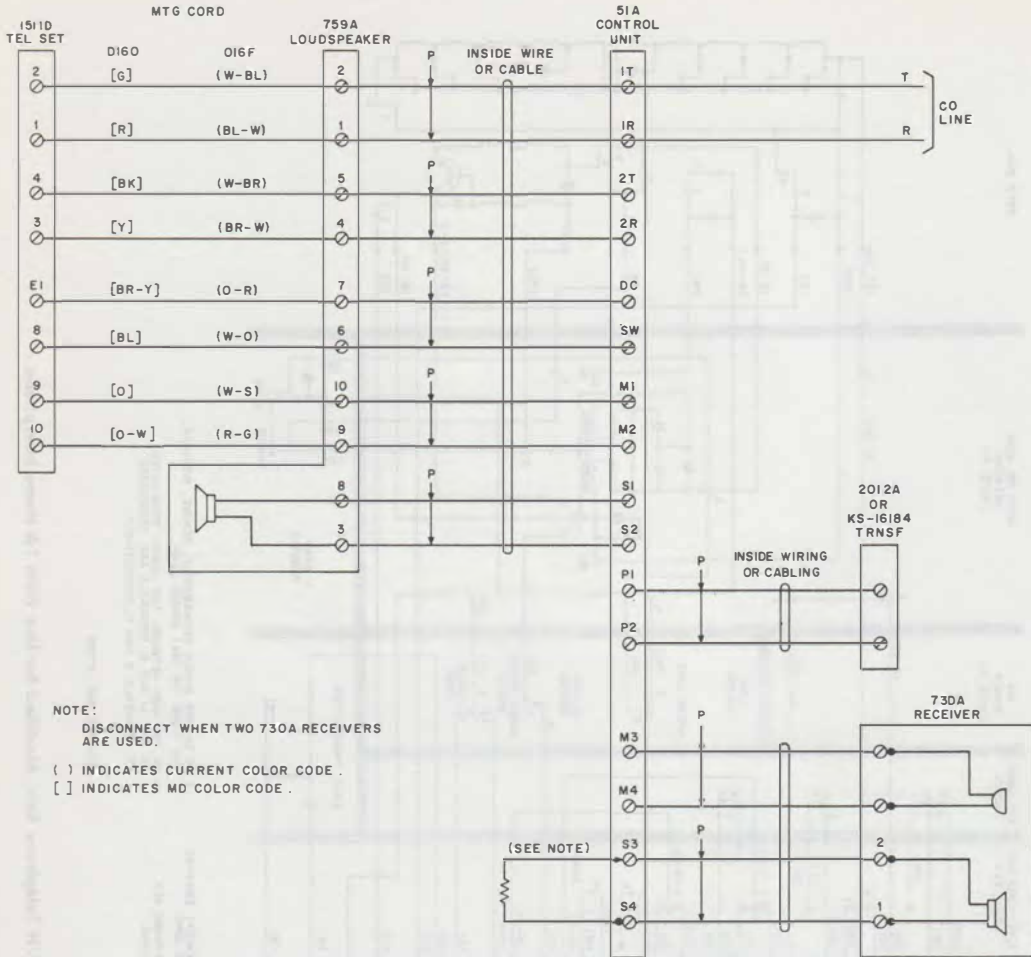


Fig. 3—1511D Telephone Set, Connections to 1A Home Interphone System

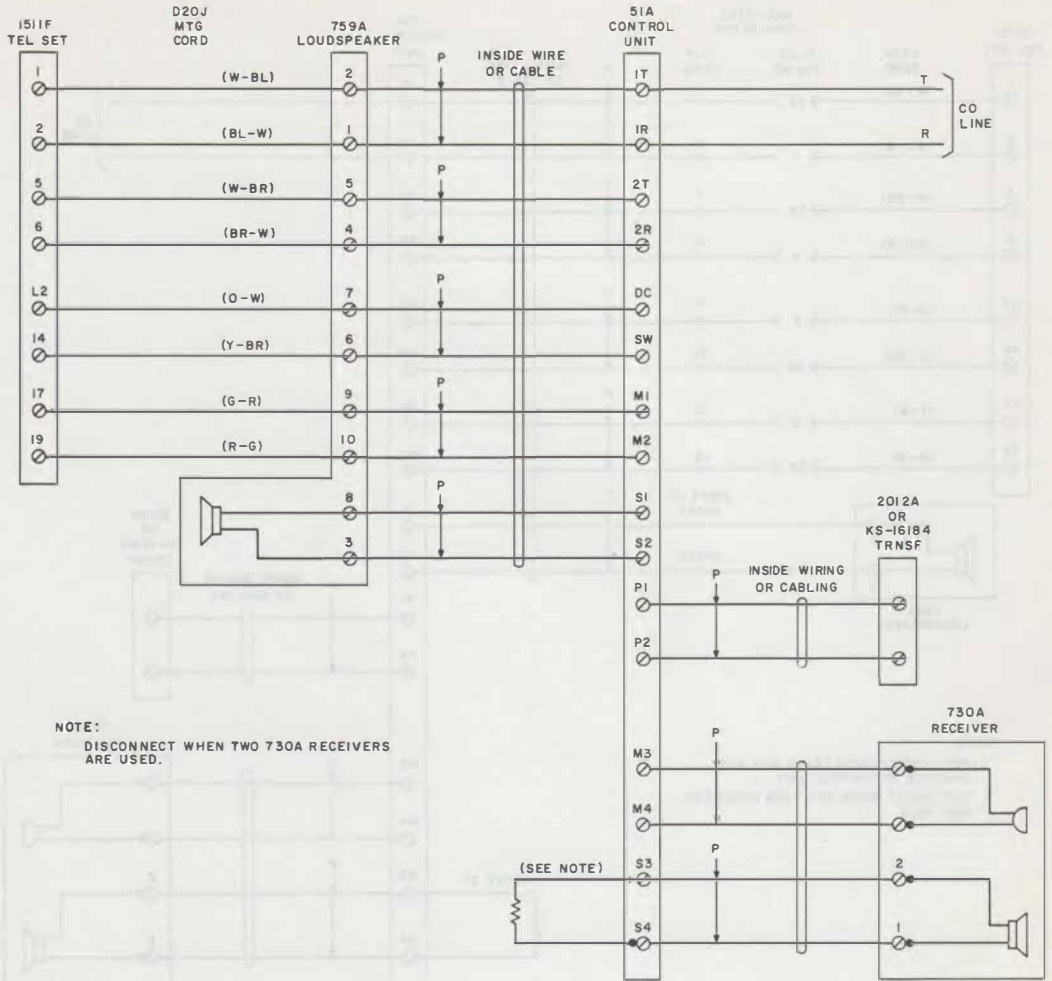


Fig. 4—1511F Telephone Set, Connections to 1A Home Interphone System

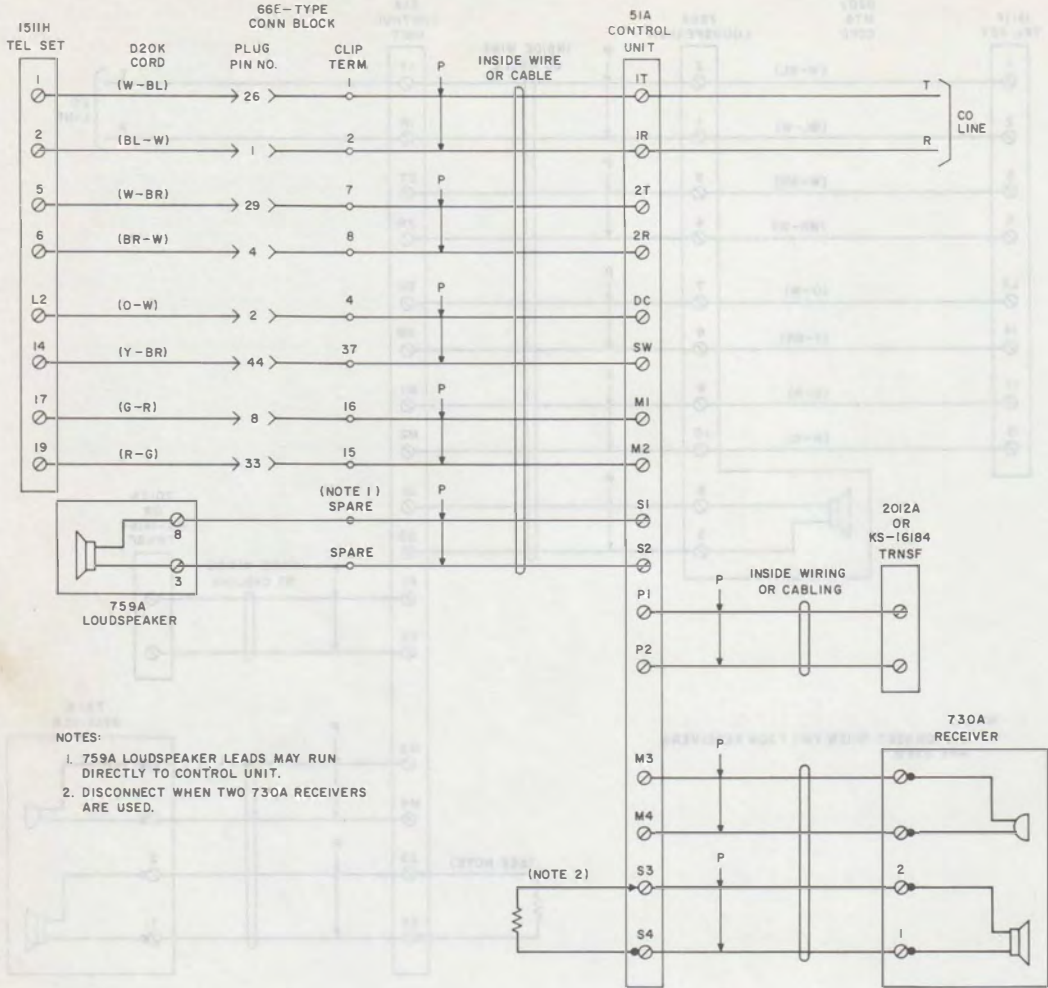


Fig. 5—1511H Telephone Set, Connections to 1A Home Interphone System

2. MAINTENANCE

2.01 To modify a 1511-type telephone set for use in the 1A home interphone system, a transmitter must be ordered separately and installed in the telephone set.

2.02 Install a 664E transmitter unit in the 1511-type set in the position shown in Fig. 6 using screws provided.



Fig. 6—Location of 664E Transmitter Unit in 1511-Type Telephone Set