

## KEY EQUIPMENT—4A

### COMMON BATTERY TALKING—COMMON BATTERY SIGNALING

#### CONNECTIONS

#### 1. GENERAL

1.01 This section contains connections for the 4A key equipment. Refer to SD-69087-01 for full schematics of components used in the system.



*To minimize the possibility of crosstalk, the wiring between the subscriber set, 6026-type key, and dial should not exceed 10 feet. Avoid paralleling with other telephone wires.*

1.02 This section is reissued to:

- Revise Fig. 3, 10, 11, and 12 to show factory strap between terminals 4 and 5 of 6026B key which is to be removed.

#### 2. CONNECTION INDEX

Fig. 1—685A Subset and Rotary Dial, With Hold

Fig. 2—685A Subset and Rotary Dial, With or Without A Lead Control

Fig. 3—688C Subset and Rotary Dial, With Hold

Fig. 4—688A (MD) Subset and Rotary Dial, A Lead Control

Fig. 5—688B (MD) Subset and Rotary Dial, A Lead Control

Fig. 6—688C Subset and Rotary Dial, A Lead Control

Fig. 7—688C Subset and 1025A3 (MD) Dial, A Lead Control

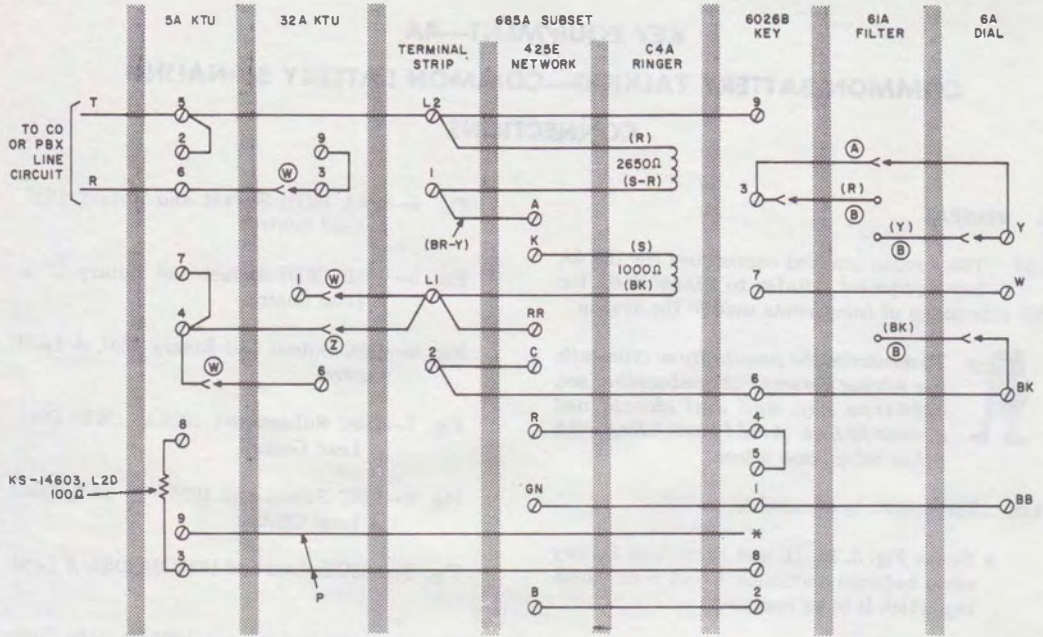
Fig. 8—688C Subset and 1025W3A (MD) Dial, A Lead Control

Fig. 9—688C Subset and 1035C3A Dial, A Lead Control

Fig. 10—688C Subset and 1025A3 (MD) Dial, With Hold

Fig. 11—688C Subset and 1025W3A (MD) Dial, With Hold

Fig. 12—688C Subset and 1035C3A Dial, With Hold



- \* INSULATE AND STORE
- (W) LOOP LESS THAN 300 OHMS
- (Z) LOOP MORE THAN 300 OHMS
- (A) WITHOUT 61A FILTER
- (B) WITH 61A FILTER

Fig. 1—685A Subset and Rotary Dial, With Hold

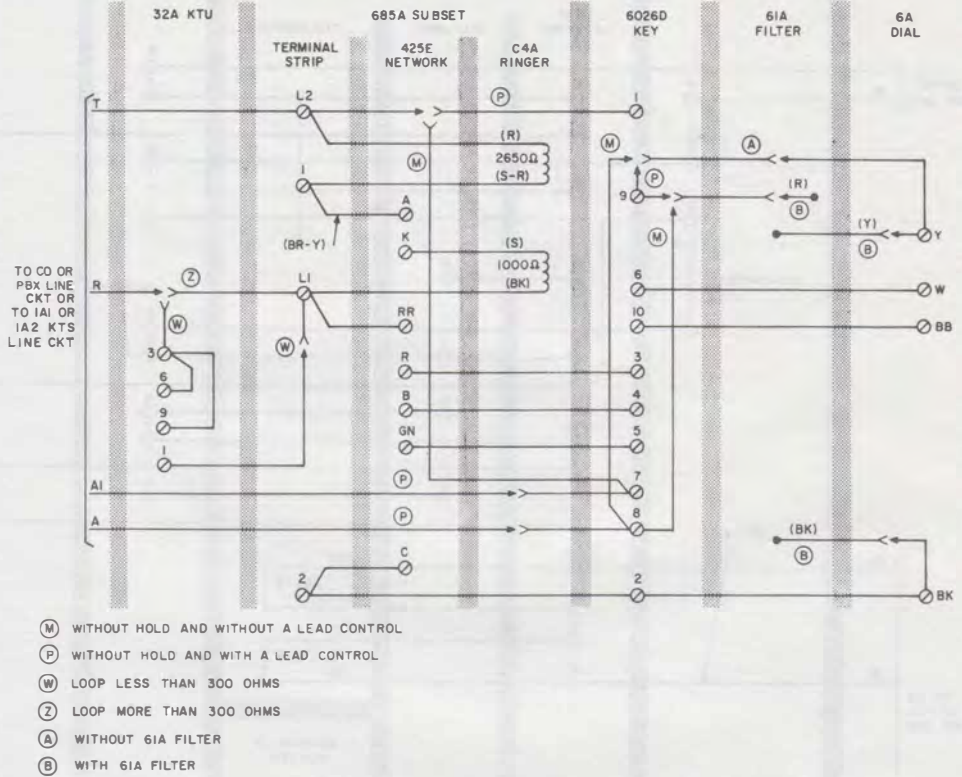


Fig. 2—685A Substation and Rotary Dial, With or Without A Lead Control

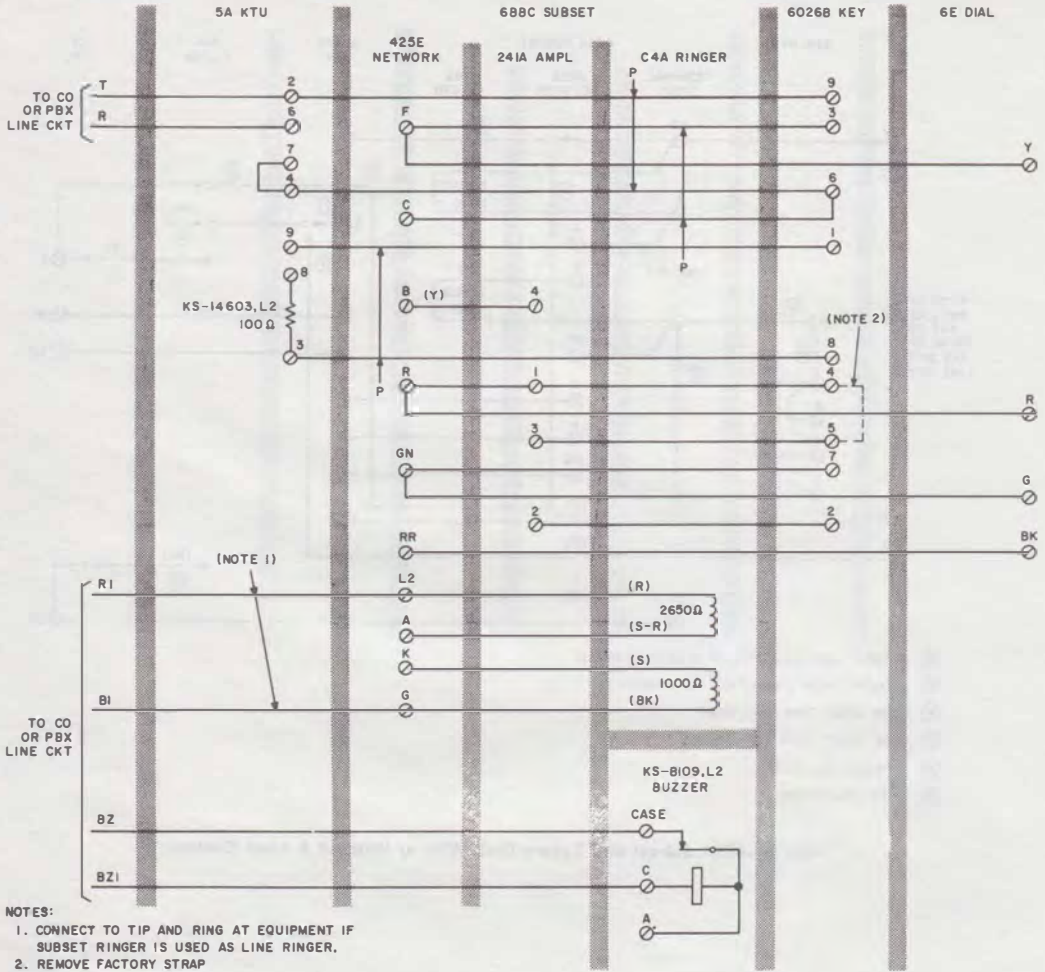
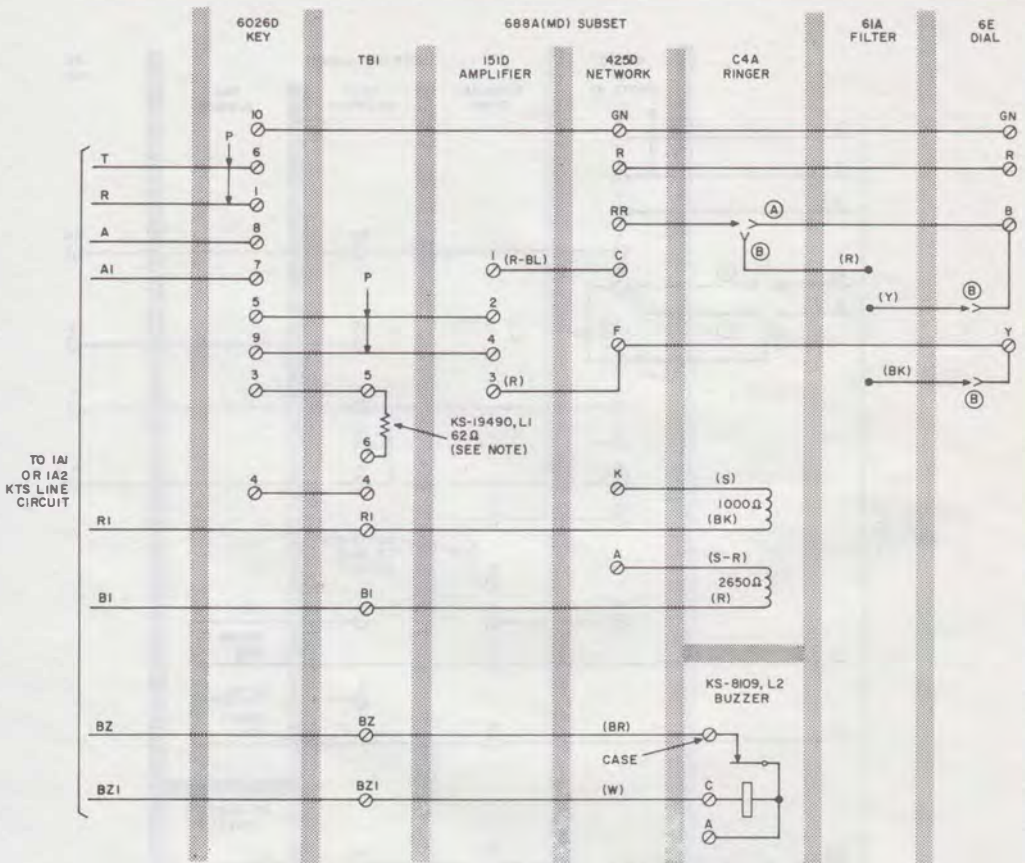


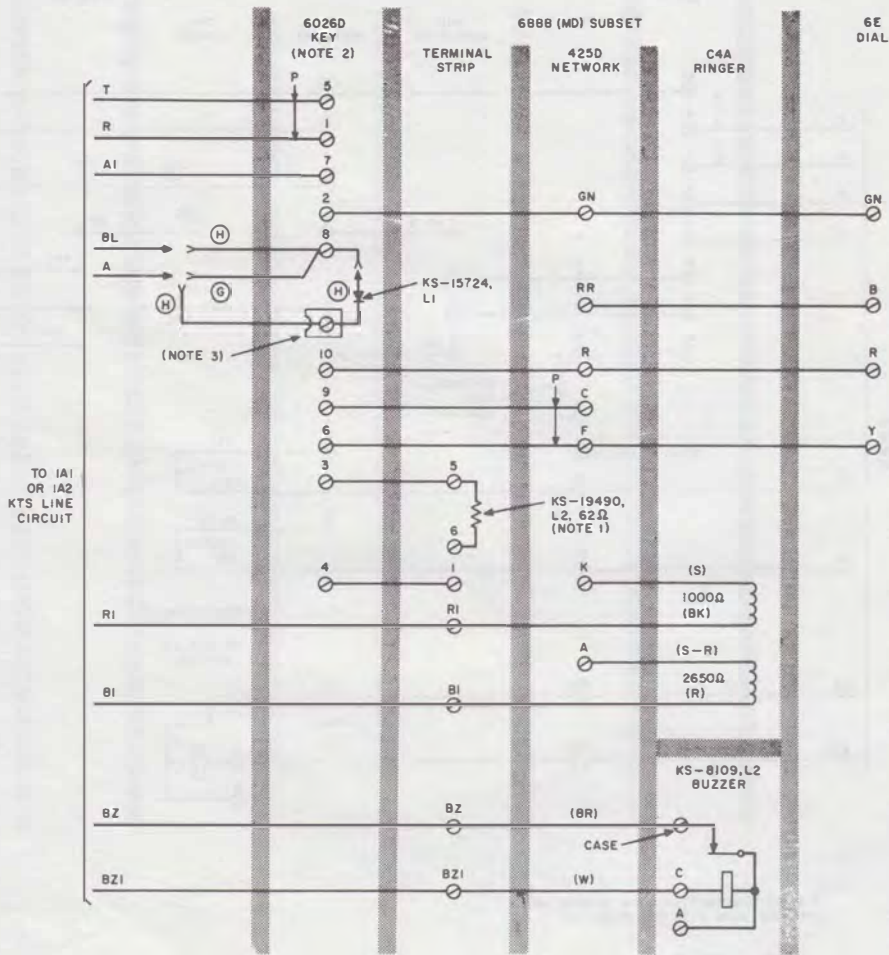
Fig. 3—688C Subset and Rotary Dial, With Hold



NOTE:  
IF MORE TRANSMITTER GAIN IS REQUIRED,  
REPLACE WITH A 30 OHM RESISTOR.

- (A) WITHOUT 61A FILTER
- (B) WITH 61A FILTER

Fig. 4—688A (MD) Subset and Rotary Dial, A Lead Control

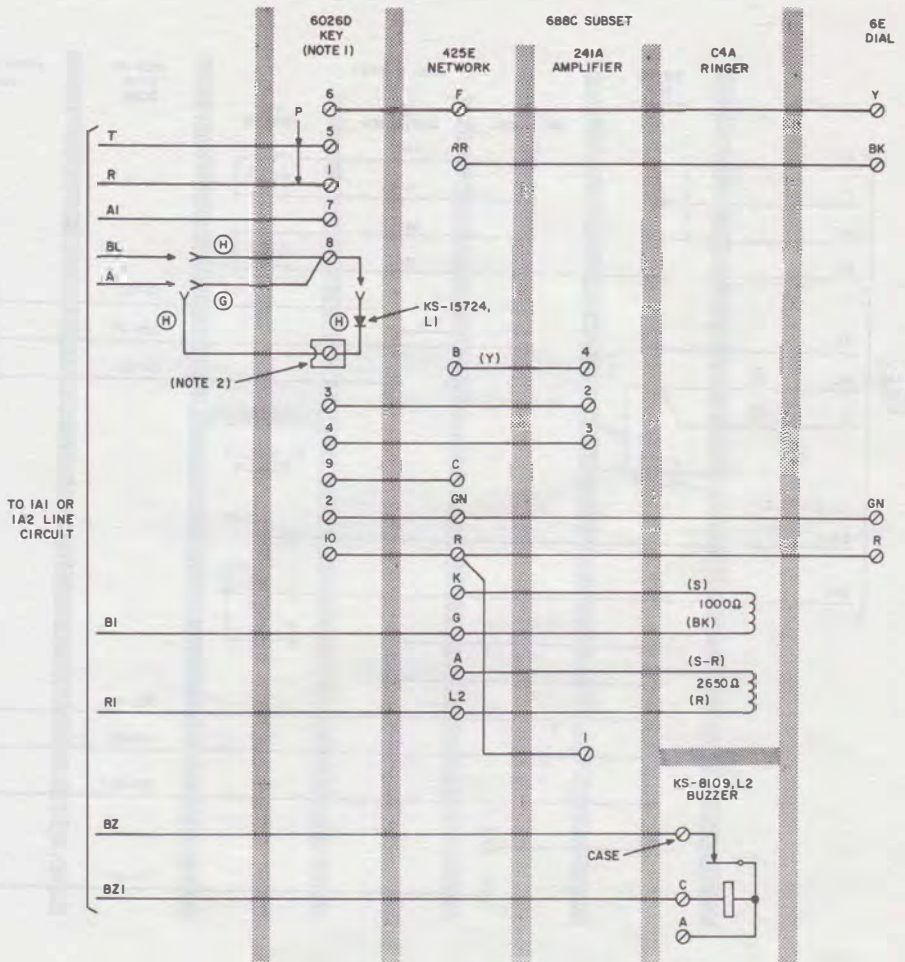


TO IA1  
OR IA2  
KTS LINE  
CIRCUIT

NOTES:

1. IF MORE TRANSMITTER GAIN IS REQUIRED, REPLACE WITH 30Ω RESISTOR.
  2. MODIFY KEY BY MOVING (BK) SPADE-TIPPED LEAD CONNECTED TO VARISTOR FROM TERMINAL 3 TO 2.
  3. USE D-161488 CONNECTOR.
- (G) WITHOUT BUSY LAMP.  
(H) WITH BUSY LAMP.

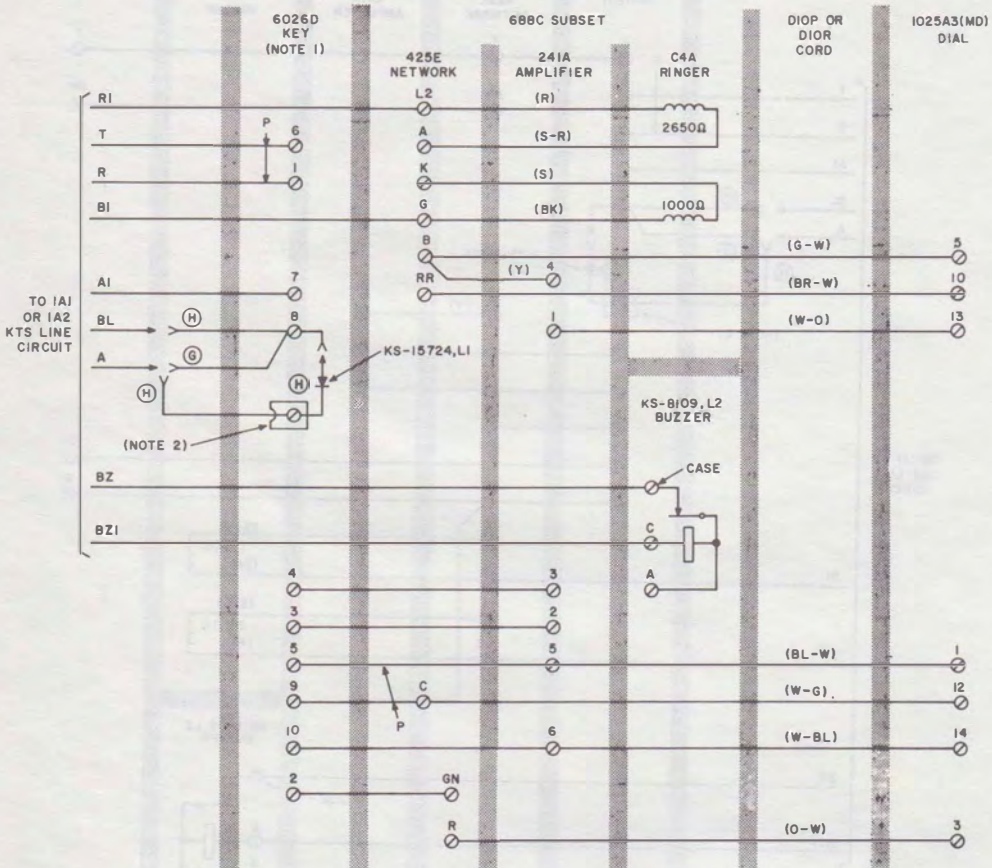
Fig. 5—688B (MD) Subset and Rotary Dial, A Lead Control



NOTES:

1. MODIFY KEY BY MOVING (BK) SPAOE - TIPPED LEAD CONNECTED TO VARISTOR FROM TERMINAL 3 TO 2.
  2. USE D-161488 CONNECTOR.
- (G) WITHOUT BUSY LAMP
- (H) WITH BUSY LAMP

Fig. 6—688C Subset and Rotary Dial, A Lead Control



NOTES:

1. MODIFY KEY BY MOVING (BK) SPADE-TIPPED LEAD CONNECTED TO VARISTOR FROM TERMINAL 3 TO 2.
2. USE D-16148B CONNECTOR.

- (G) WITHOUT BUSY LAMP
- (H) WITH BUSY LAMP

Fig. 7—688C Subset and 1025A3 (MD) Dial, A Lead Control



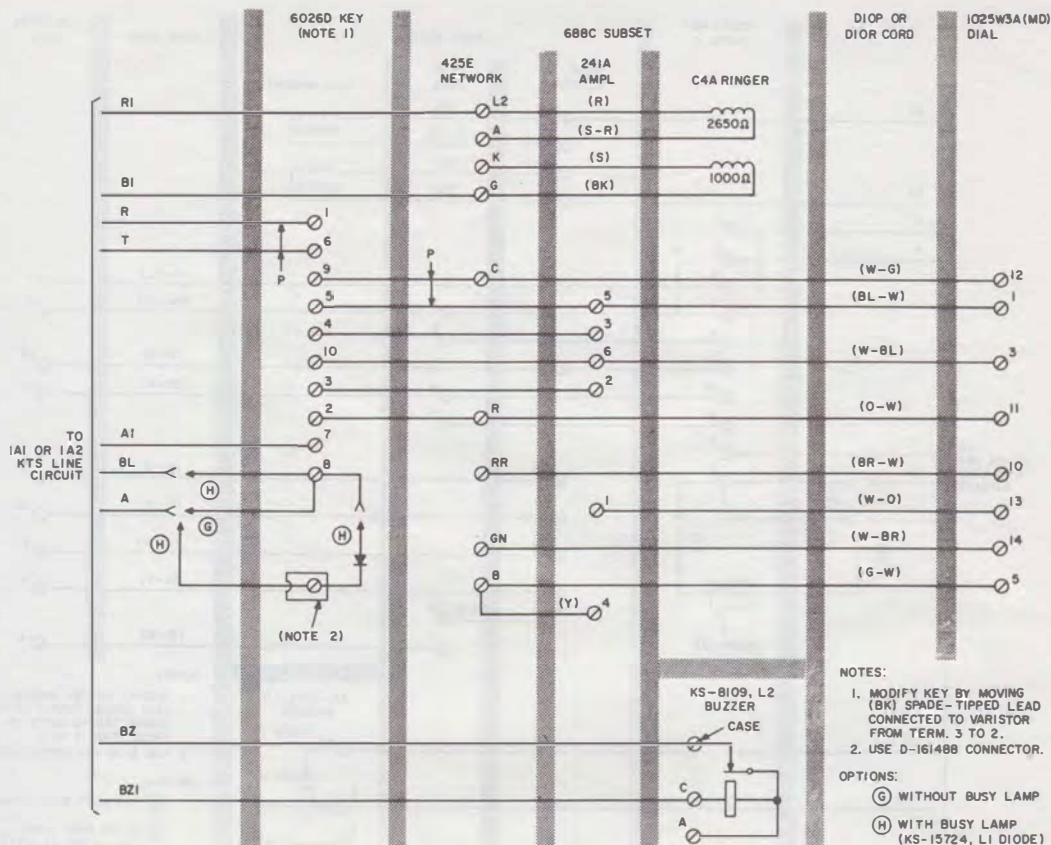


Fig. 8—688C Subset and 1025W3A (MD) Dial, A Lead Control

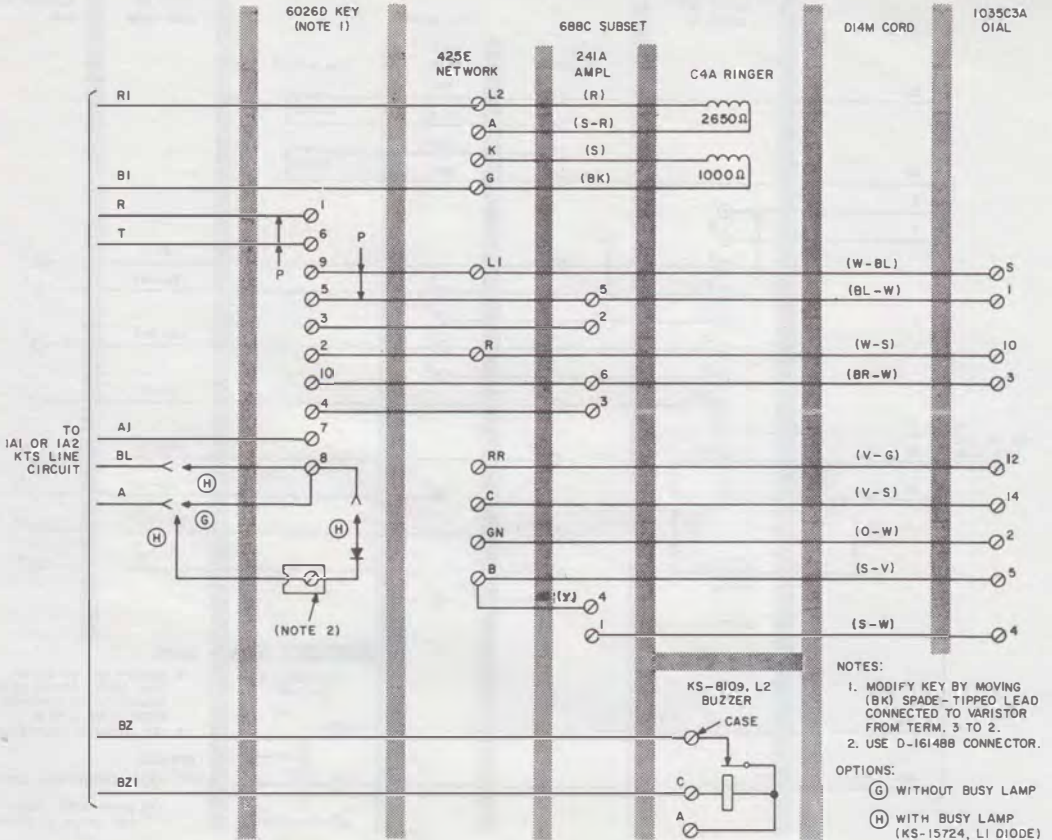


Fig. 9—688C Subset and 1035C3A Dial, A Lead Control

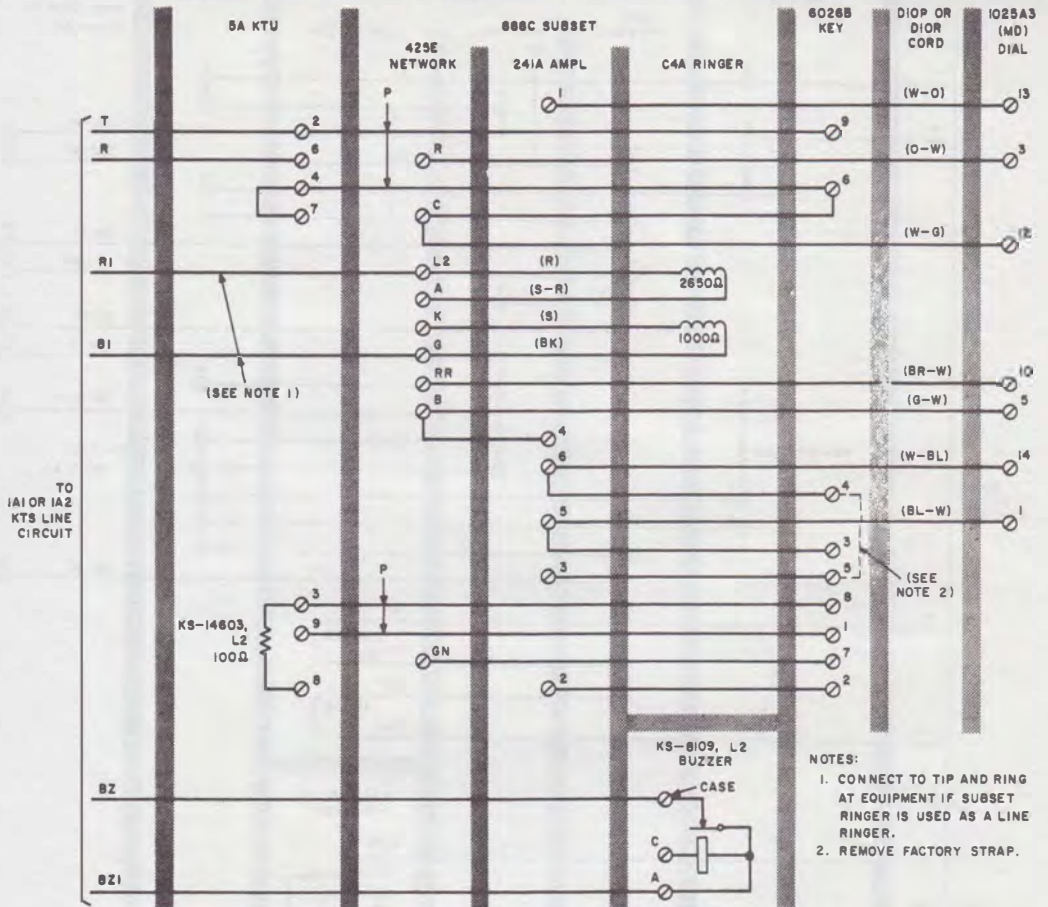


Fig. 10—688C Subset and 1025A3 (MD) Dial, With Hold

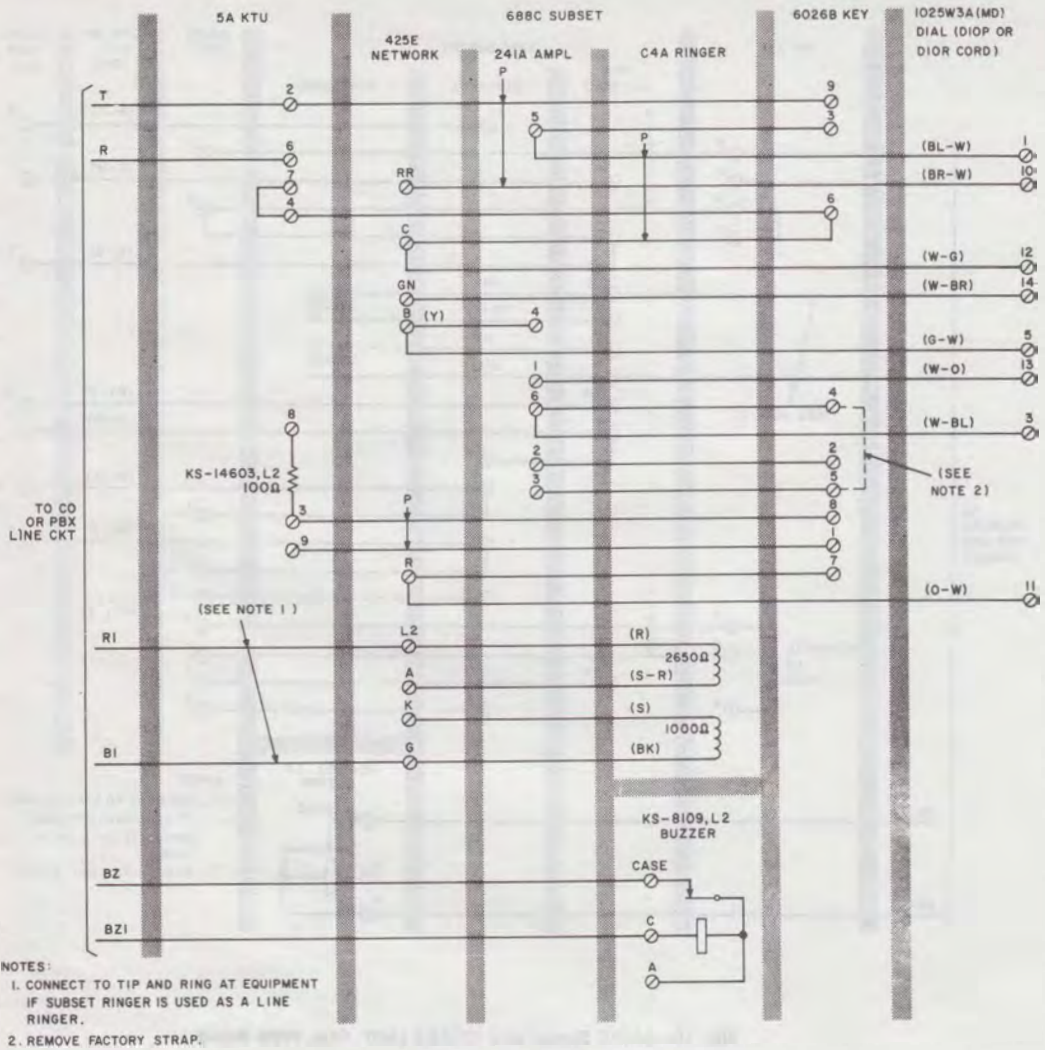


Fig. 11—688C Subset and 1025W3A (MD) Dial, With Hold

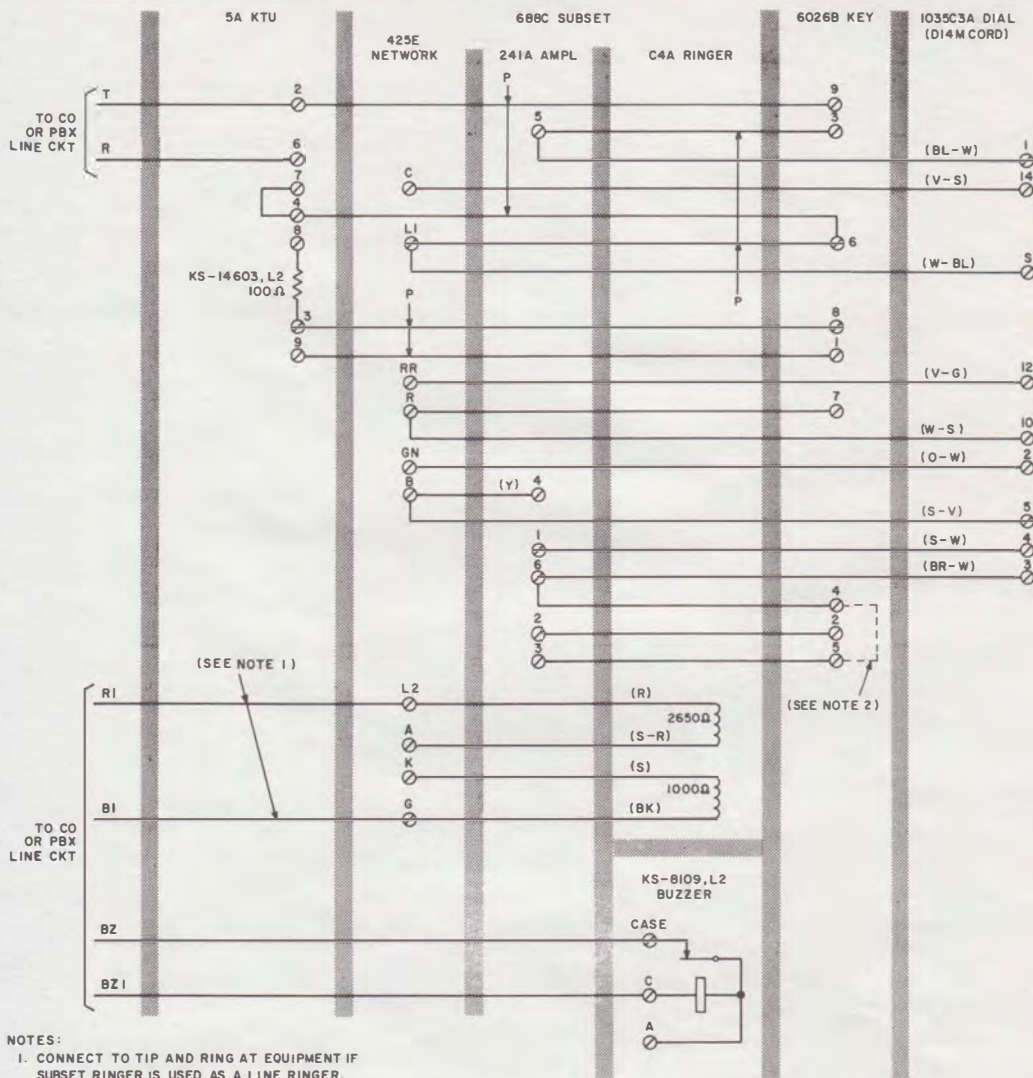


Fig. 12—688C Subset and 1035C3A Dial, With Hold