

575AM AND 2575AM TELEPHONE SETS

IDENTIFICATION, INSTALLATION, CONNECTIONS, AND MAINTENANCE

1. GENERAL

1.01 This section contains information on the 575AM and 2575AM telephone sets.

1.02 This section is reissued to add:

- Information on the 683AE transmitter, Table A
- Information on the third intercom line used in COM KEY* 2152 key telephone system, Fig. 4.

2. IDENTIFICATION

2.01 The 575AM (rotary) and 2575AM (TOUCH-TONE® dial) telephone sets, available in ivory only, are the same in appearance as the standard 6-button desk sets and are arranged for intercom-only in COM KEY* 718, 734, 1434, and 2152 key telephone systems.

2.02 Each set is equipped with a 636A key, 4228-type network, D20P-87 mounting cord, G15A-50 handset, H4DU-50 handset cord, 616D jack, and either a 9CA-50 rotary dial or a 35Y3A TOUCH-TONE dial. All components are replaceable (except the network) per local instructions.

2.03 The hands-free answer on intercom (HFAI) is an optional feature available in COM KEY 2152 key telephone system installations. This feature consists of a 683AE transmitter which is arranged for field installation.

*Trademark of American Telephone and Telegraph Company

2.04 The key positions from left to right provide a red nonfunctioning button (which may be illuminated for message waiting use), three clear illuminated buttons for intercom (locking and releasing), and two nonfunctioning buttons.

3. INSTALLATION AND CONNECTIONS

3.01 Install telephone sets in desired location making sure that any options are installed before the telephone set is connected.



The 575AM (Fig. 1) and 2575AM (Fig. 2) telephone sets are factory wired for two intercom lines only, for the third intercom line refer to Fig. 3, Notes 2 and 3 or Fig. 4, Notes 1 and 2.

3.02 For COM KEY 718 key telephone system connections, terminate the connector cable on the connecting block as shown in Fig. 3. For the third intercom line used in COM KEY 718, 734, and 1434 connect as shown on Fig. 3, Notes 2 and 3. For the third intercom line used in COM KEY 2152 key telephone system connect as shown in Fig. 4, Notes 1 and 2.

3.02 For connecting the HFAI feature (COM KEY 2152 key telephone system only) refer to Table A.

4. MAINTENANCE

4.01 Maintenance of the 575AM and 2575AM telephone sets should be limited to checking for loose or broken connections and the replacement of components per local instructions.

NOTICE

Not for use or disclosure outside the
Bell System except under written agreement

SECTION 503-603-120

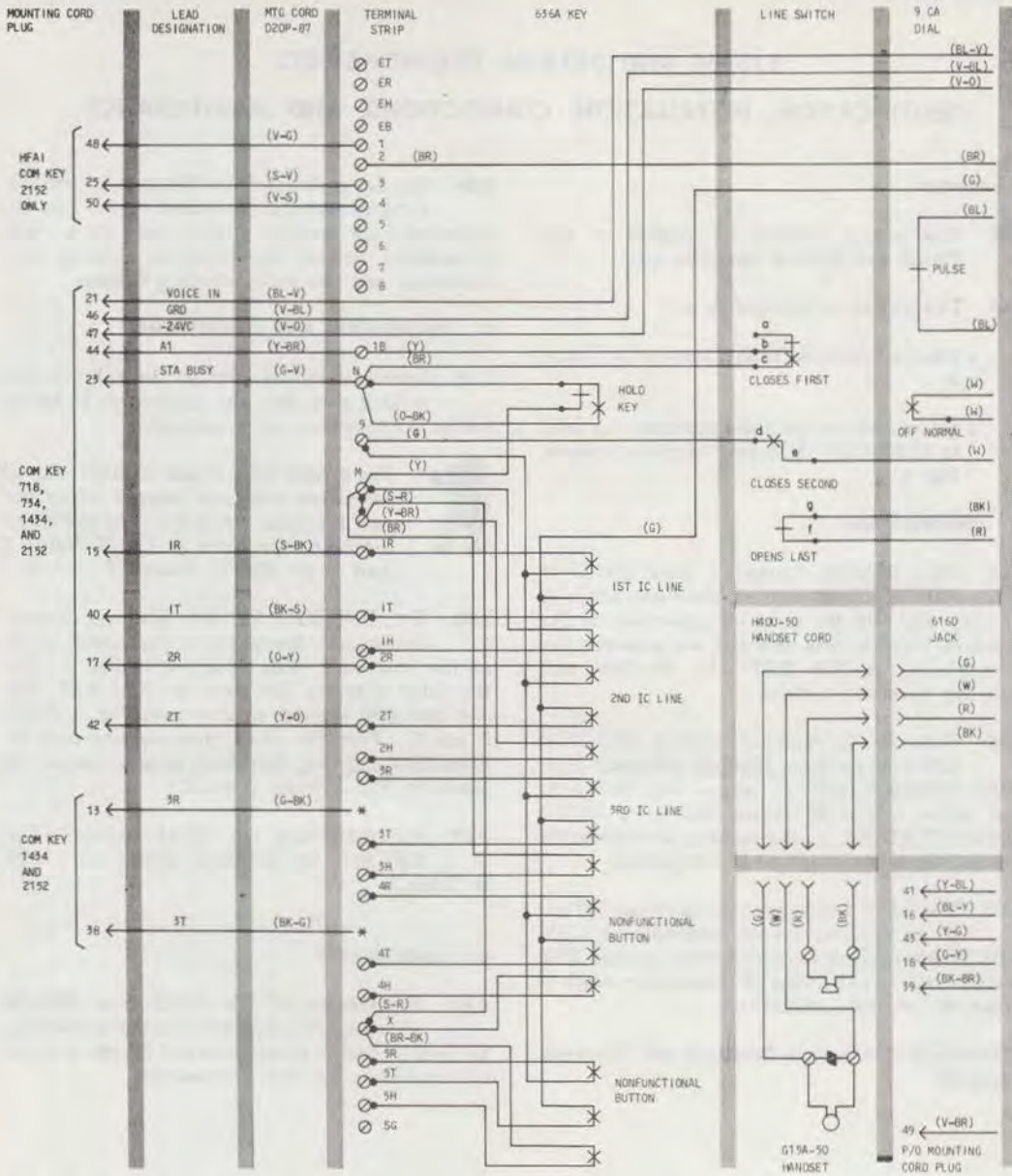
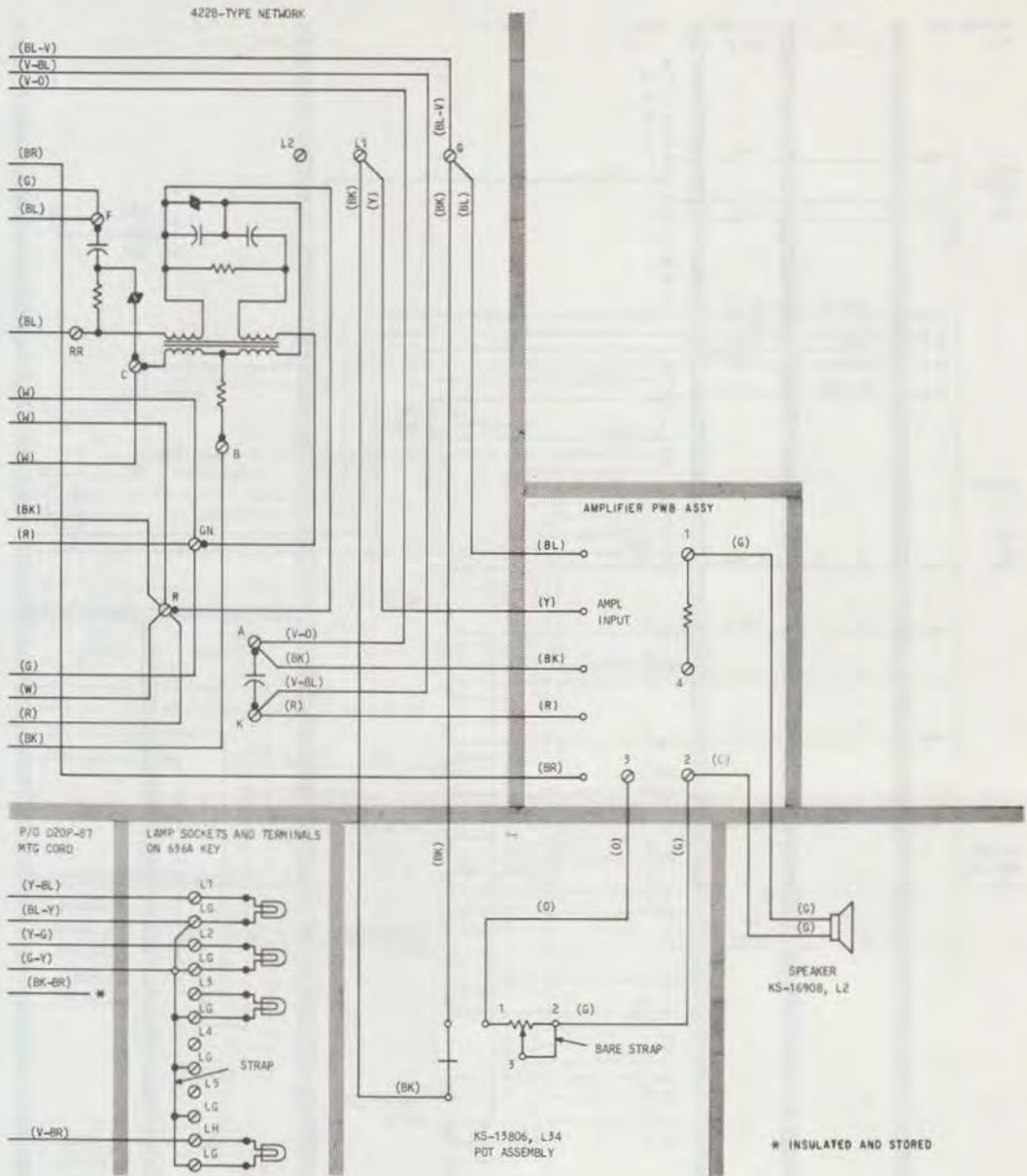


Fig. 1—575AM Telephone Set Connecting Diagram (Sheet 1 of 2)

Fig. 1— Φ 575AM Telephone Set Connecting Diagram (Sheet 2 of 2)†

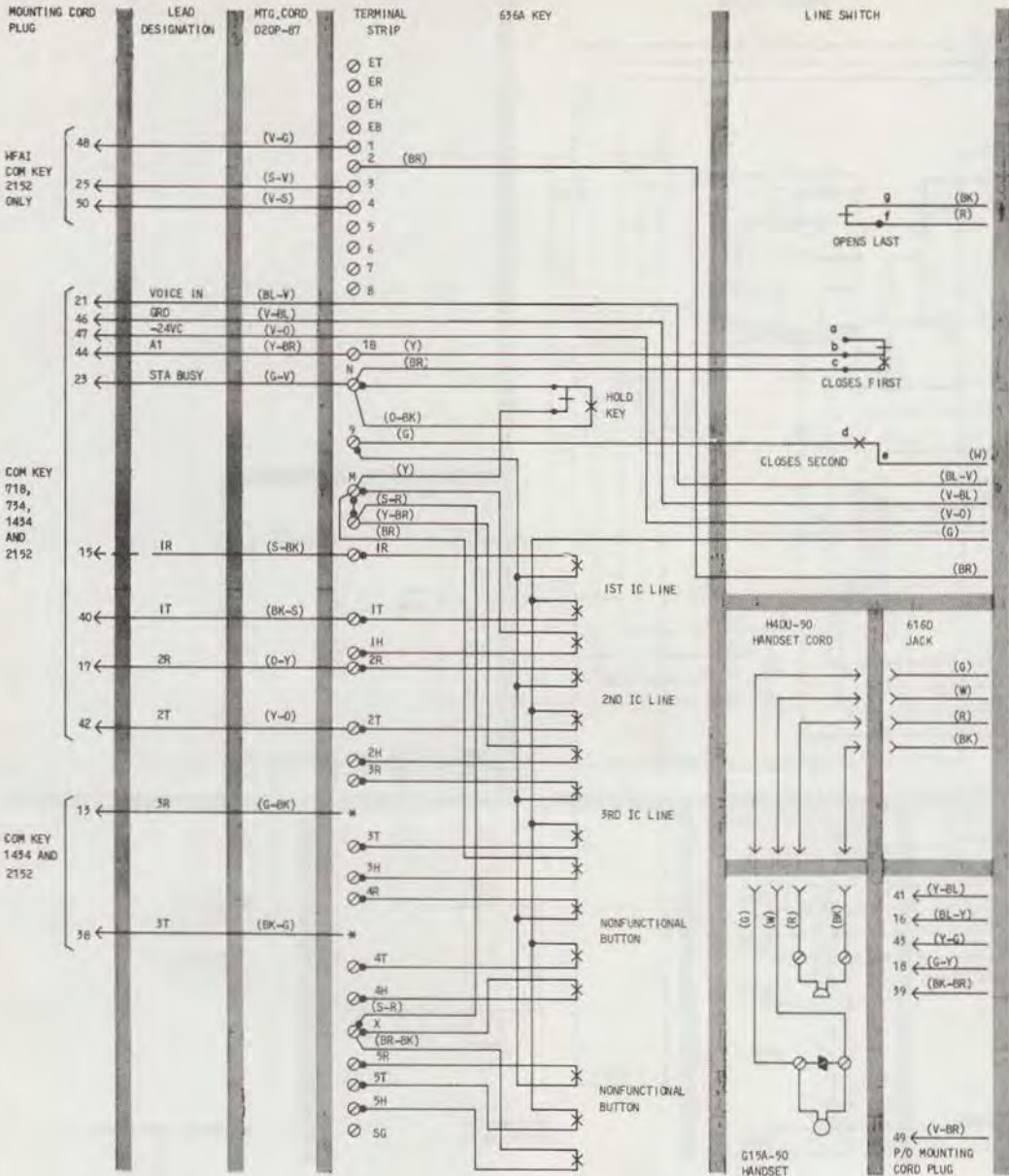


Fig. 2—2575AM Telephone Set Connecting Diagram (Sheet 1 of 2)

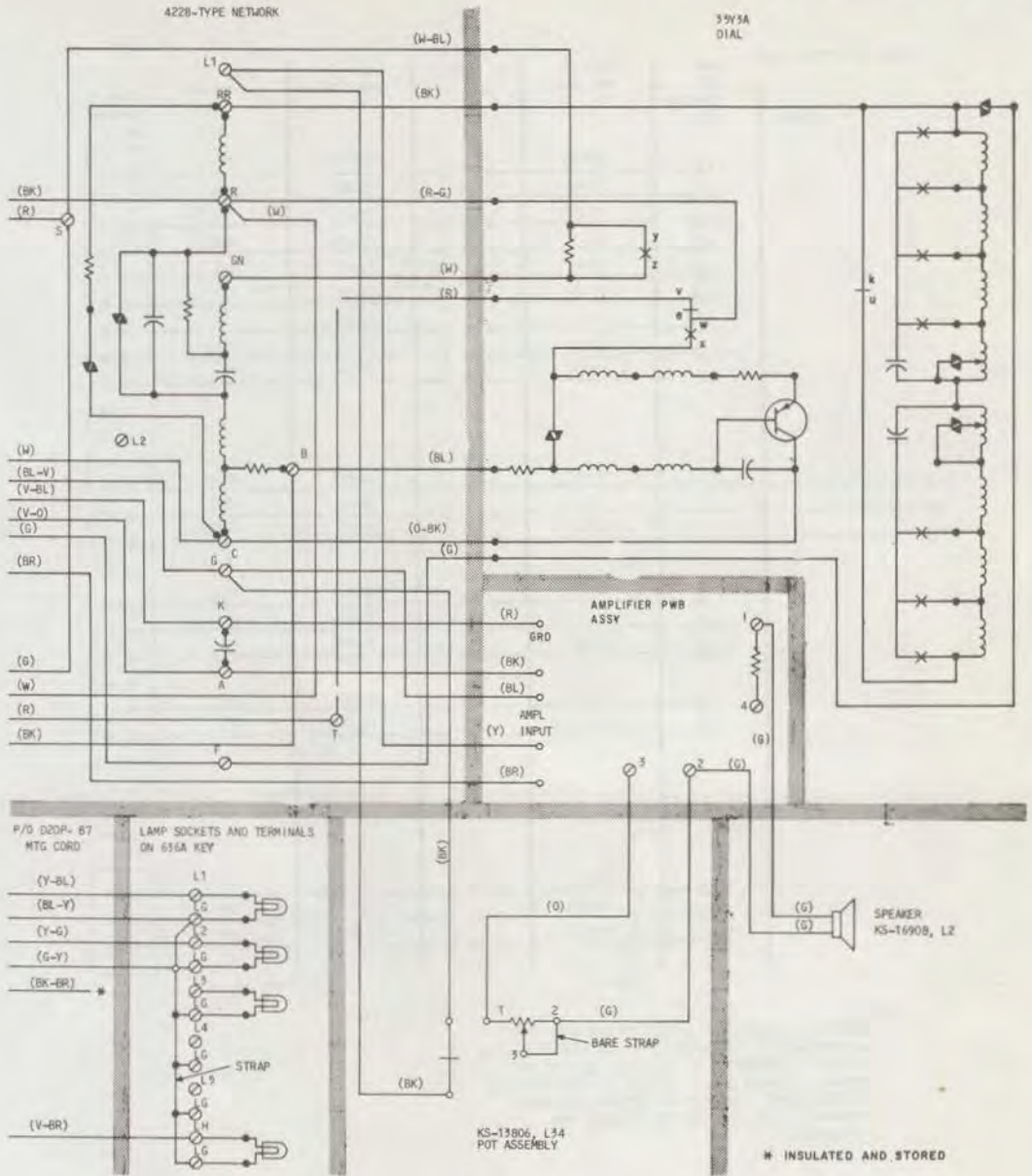


Fig. 2— Φ 2575AM Telephone Set Connecting Diagram (Sheet 2 of 2) Φ

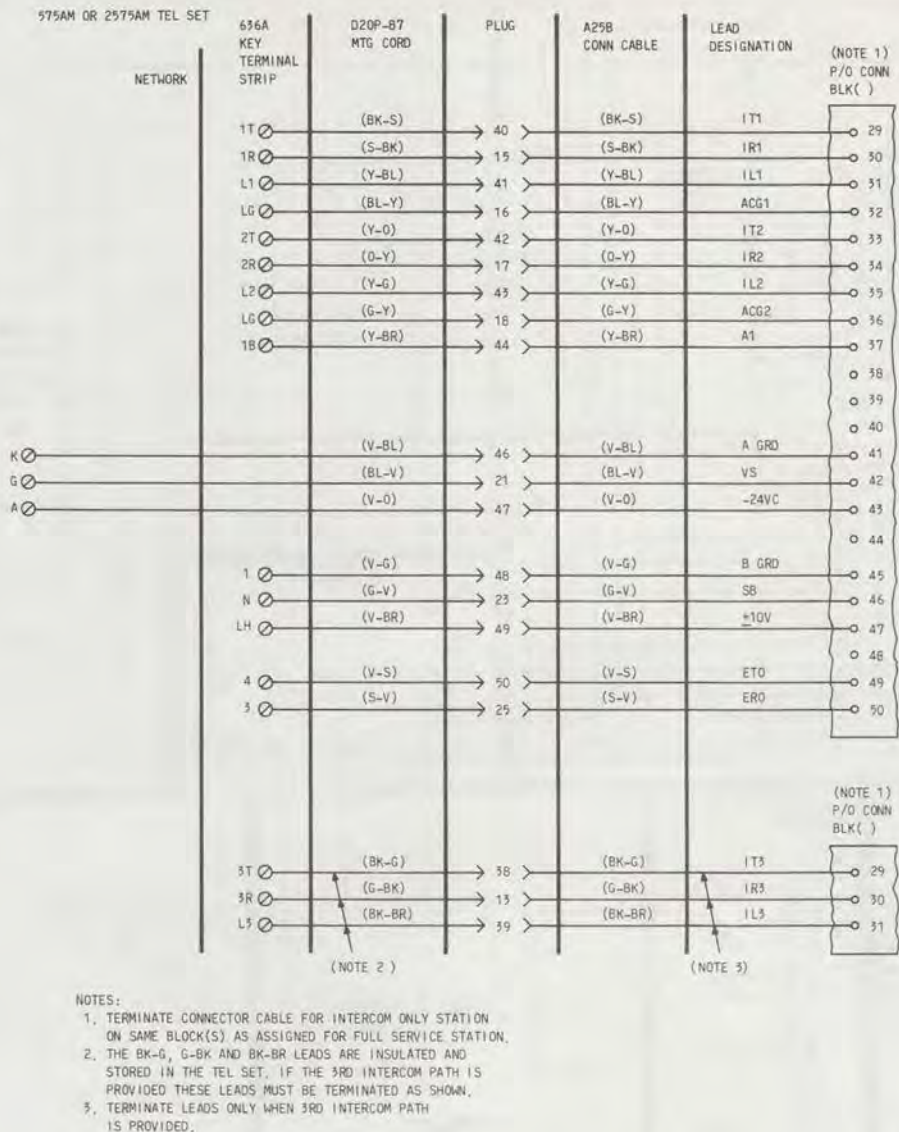
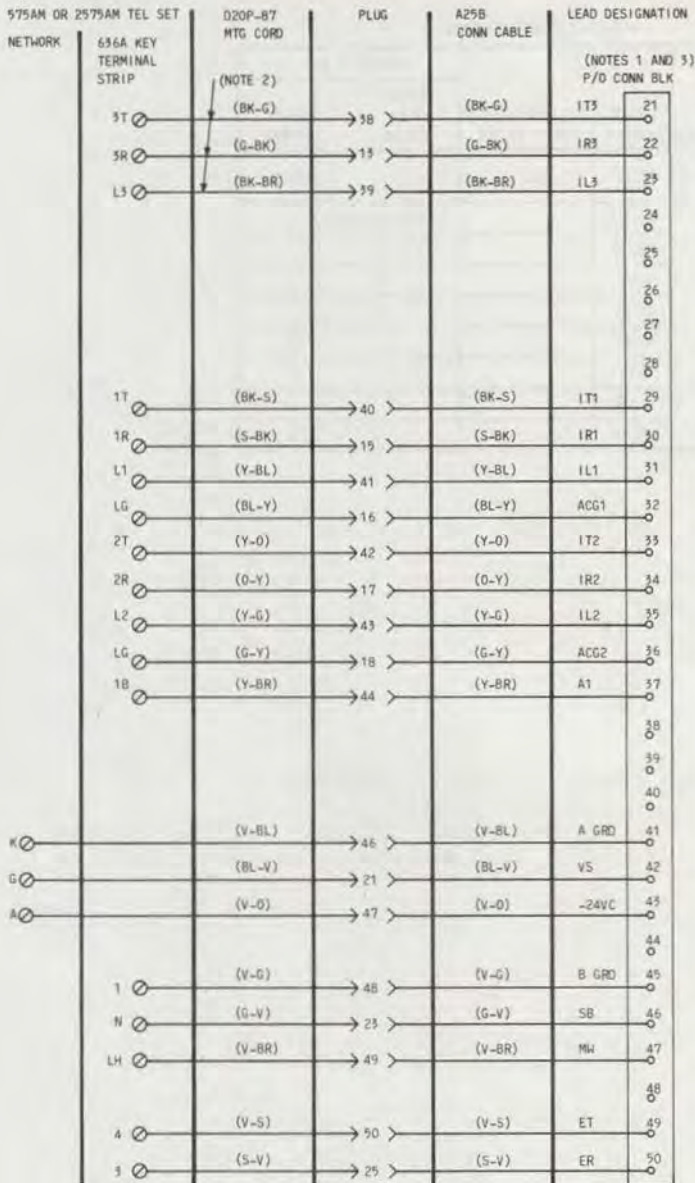


Fig. 3—575AM and 2575AM Telephone Set Connector Cable Connectins In COM KEY 718, 734, and 1434 Key Telephone Systems



NOTES:

- 3RD INTERCOM PATH APPEARS ON A MULTIPLE PURPOSE BUTTON AND MUST BE CROSS CONNECTED. REFER TO SECTION 518-450-111 FOR ADDITIONAL INFORMATION.
- THE (BK-G), (G-BK), AND (BK-BR) LEADS ARE INSULATED AND STORED IN THE TELEPHONE SET. IF THE 3RD INTERCOM PATH IS PROVIDED THESE LEADS MUST BE TERMINATED AS SHOWN.
- TERMINATE CONNECTOR CABLE FOR INTERCOM ONLY STATION ON SAME BLOCK(S) AS ASSIGNED FOR FULL SERVICE STATION.

Fig. 4—975AM and 2575AM Telephone Set Connector Cable Connections In COM KEY 2152 Key Telephone System

◆ TABLE A ◆

HFAI CONNECTIONS

| APPARATUS | LEAD COLOR | REMOVE FROM NET. TERM. | CONNECT TO | |
|----------------------|------------|------------------------|----------------|------------|
| | | | 636A KEY TERM. | NET. TERM. |
| D20P-87 Mtg. Cord | BL-V | G | | L2 |
| 683AE TRMTR | W-BL | | LG(Lamp Grd) | |
| | BL-W | | 1 | |
| | W-O | | 4 | |
| | O-W | | 3 | |
| | G-W | | | L2 |
| | W-G | | | G |
| | W-BR | | | A |
| | BR-W | | | K |