

952A1-03 TELEPHONE SET

IDENTIFICATION, INSTALLATION, AND CONNECTIONS

1. GENERAL

1.01 This section contains information on the 952A1-03 DESIGN LINE* telephone set (Americana Wall Telephone).

1.02 Whenever this section is reissued, the reason(s) for reissue will be listed in this paragraph.

1.03 The customers premise must be properly wired with an appropriate connecting block to accept the D4BU-29 plug-ended mounting cord.

Warning: Telephone apparatus or wiring shall not be installed in a location where minimum separation from other wiring as specified in Section 460-300-149 cannot be maintained.

2. IDENTIFICATION

2.01 The 952A1-03 rotary dial equipped telephone set is a new DESIGN LINE telephone set being made available to the public. Although the set comes completely assembled, the customer only purchases the housing and receiver shells. The internal transmission and signaling components remain the property of the telephone company.

2.02 The telephone set (Fig. 1) is a simulated antique wall set. The metal trim details used on the set are antique nickel and the housing is real oak wood. On the right side of the set there is a manual crank which when turned rings a separate bell inside the telephone set. This bell is not part of the ringing circuit and is for looks only. At the bottom of the telephone set is a hinged writing shelf which covers a storage space for pencils, paper, etc.

* Trademark of American Telephone and Telegraph Company.



Fig. 1—952A1-03 DESIGN LINE Telephone Set

NOTICE

Not for use or disclosure outside the
Bell System except under written agreement

2.03 The receiver cord is a special antique cloth covered cord (2 feet, 8 inches long) with a modular plug on both ends.

2.04 The ringer volume can be adjusted by moving the ringer volume control lever protruding from the bottom front of the set.

A. Ordering Guide

2.05 Telephone Set Ordering Information:

Set, Telephone, 952A1-03 (Complete and ready to install.)

B. Component Parts

2.06 The 952A1-03 telephone set is comprised of the following component parts:

- Dial, 8UB
- Cord, Receiver H4EK† (2 feet, 8 inches long)
- Receiver Assembly
- Transmitter Assembly
- Cord, Mounting, D4BU-29† (14 feet long)
- Ringer, P-Type
- Unit, Transmitter, T1†
- Unit, Receiver, U3†
- Network
- Unit, Telephone, 952AT-03
- Housing, 952AS1-03

2.07 These sets are primarily used as single line or two-party service; however, they can be used on four- and eight-party service if a 28A ringer isolator is provided. For connection information on the ringer isolator, refer to Section 501-375-101.

† Only these items are field replaceable, and all other repairs must be accomplished by returning the set per paragraph 4.03.

3. INSTALLATION AND CONNECTIONS

3.01 To mount the 952A1-03 telephone set over a 630-type modular connecting block, proceed as follows.

- (1) Place the mounting template (shipped with set) over the modular outlet and level it.
- (2) Mark two upper and lower mounting holes on each corner of the template.
- (3) Drill four 5/16-inch diameter holes and install the wall screw anchors provided.
- (4) Remove and discard the four screws used to install the wall anchors.
- (5) Wind up the excess mounting cord on the four plastic hooks on the rear of the set. Leave about six inches of cord loose (Fig. 2).
- (6) Plug in the end of the mounting cord and secure the set to the wall anchors using the four decorative screws and washers provided.

3.02 To connect the 952A1-03 telephone set to a 625-type modular connecting block, proceed as follows.

- (1) Make sure the intended mounting location will allow the 14-foot mounting cord to reach the telephone outlet.
- (2) Place the template at a convenient height and level it.
- (3) Mark the two upper and lower mounting holes on each corner of the template.
- (4) Drill four 5/16-inch diameter holes and install the wall screw anchors provided.
- (5) Discard the four screws used to install the wall anchors.
- (6) Wind up the excess line cord on the four plastic hooks on the rear of the set housing (Fig. 2).
- (7) Dress the mounting cord into the channel on the back of the telephone set (Fig. 2).

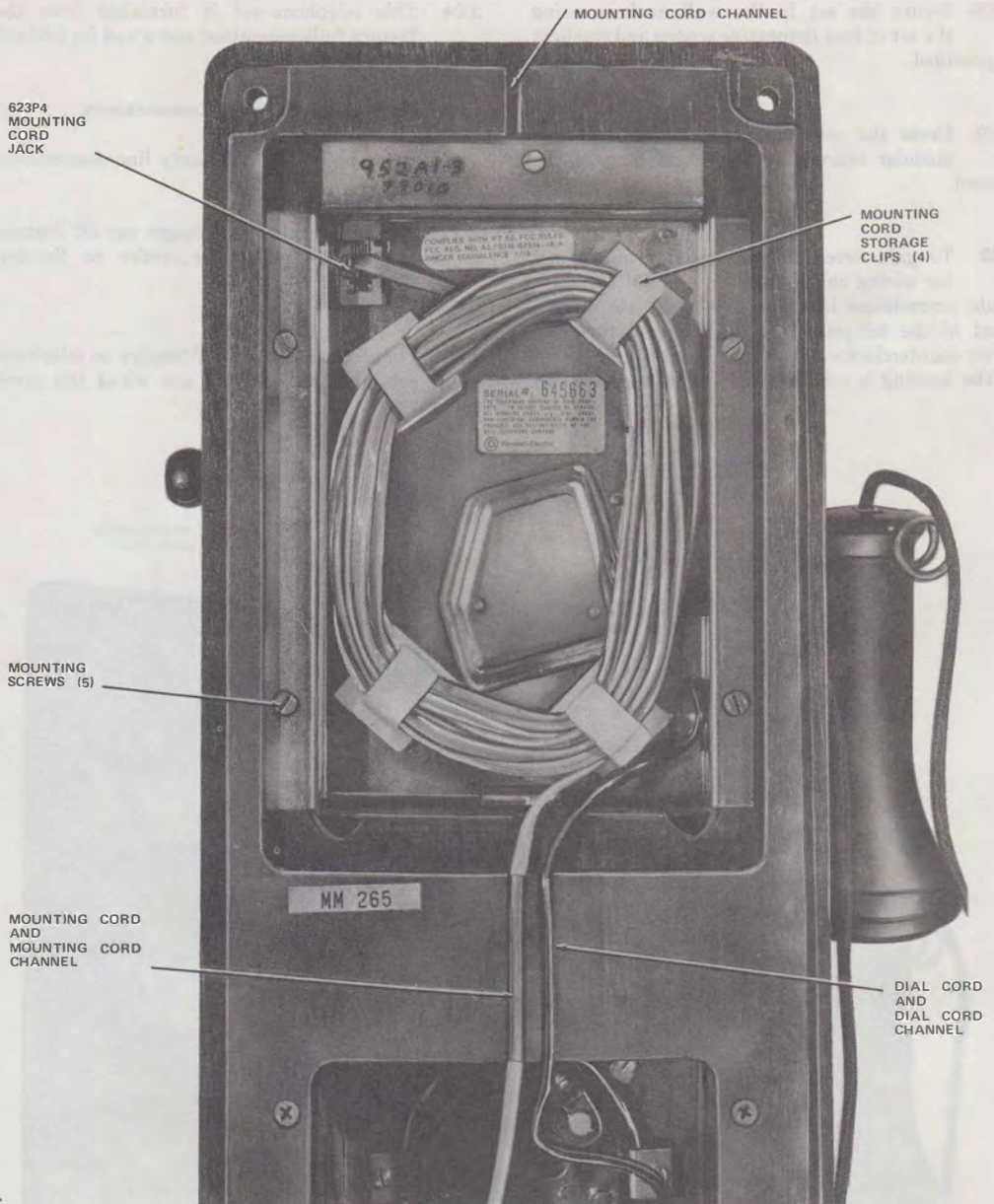


Fig. 2—952A1-03 Telephone Set, Rear View

(8) Secure the set to the wall anchors using the set of four decorative screws and washers provided.

(9) Dress the mounting cord to the 625-type modular connecting block and plug in the cord.

3.03 To gain access to the interior of the set for wiring changes, insert a small standard blade screwdriver into the key-hole plate on the front of the telephone set (Fig. 1) and turn the screw counterclockwise until the front hinged panel of the housing is released and can be opened (Fig. 3).

3.04 This telephone set is furnished from the factory fully assembled and wired for bridged ringing.

3.05 *Line and Ringer Connections.*

(1) Refer to Table A for party line connections.

(2) For adjustments and ringer cut off feature of the P-type ringer, refer to Section 501-259-101.

3.06 Connections for 1A KTS require no telephone set modifications and are wired the same as Fig. 4.

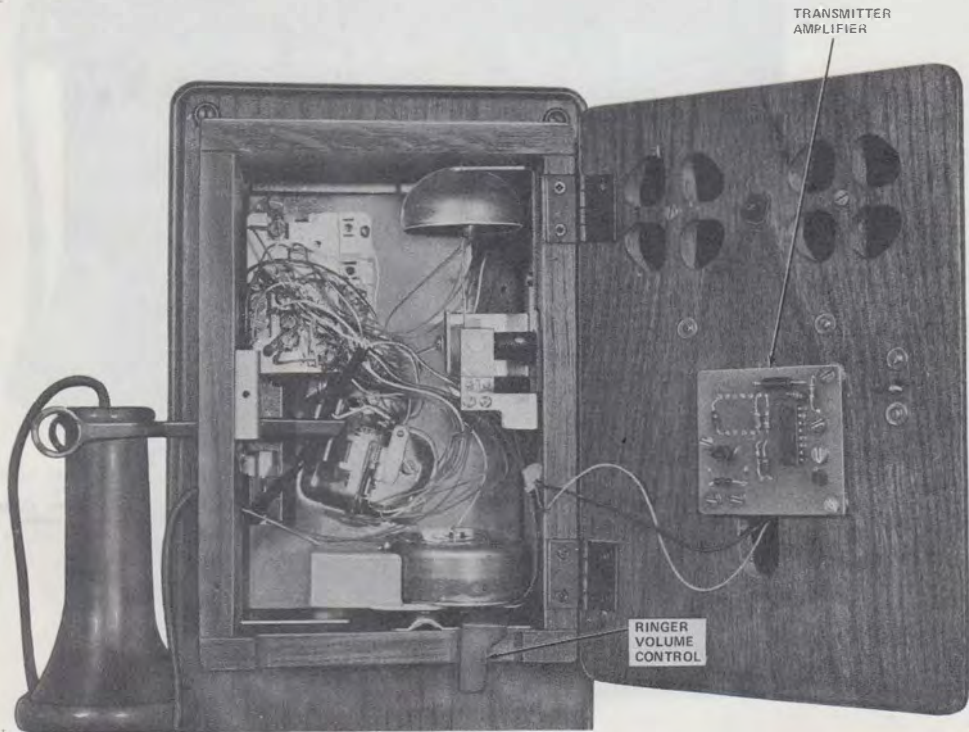


Fig. 3—952A1-03 Telephone Set With Front Panel Door Open

3.07 Connections for 1A1 and 1A2 KTS require moving the brown (BR) line switch lead from L2 on the network to the G terminal as shown in Fig. 5.

4. REMOVAL OF TELEPHONE COMPANY-OWNED COMPONENTS

4.01 When it is desired to discontinue telephone service on the DESIGN LINE telephone set, proceed as follows.

- (1) Loosen the four mounting screws and remove set from wall.
- (2) Unplug and remove mounting cord from telephone set.

(3) Loosen five screws in back of housing and remove chassis mounted telephone unit.

(4) Retrieve any other telephone company-owned components that can be easily removed.

(5) Reassemble housing.

4.02 Follow local procedures for returning company-owned components.

4.03 When it is desired to return a set to Western-Electric for repair, it should be packed using the D-181001 Kit of Parts which contains packing materials and instructions.

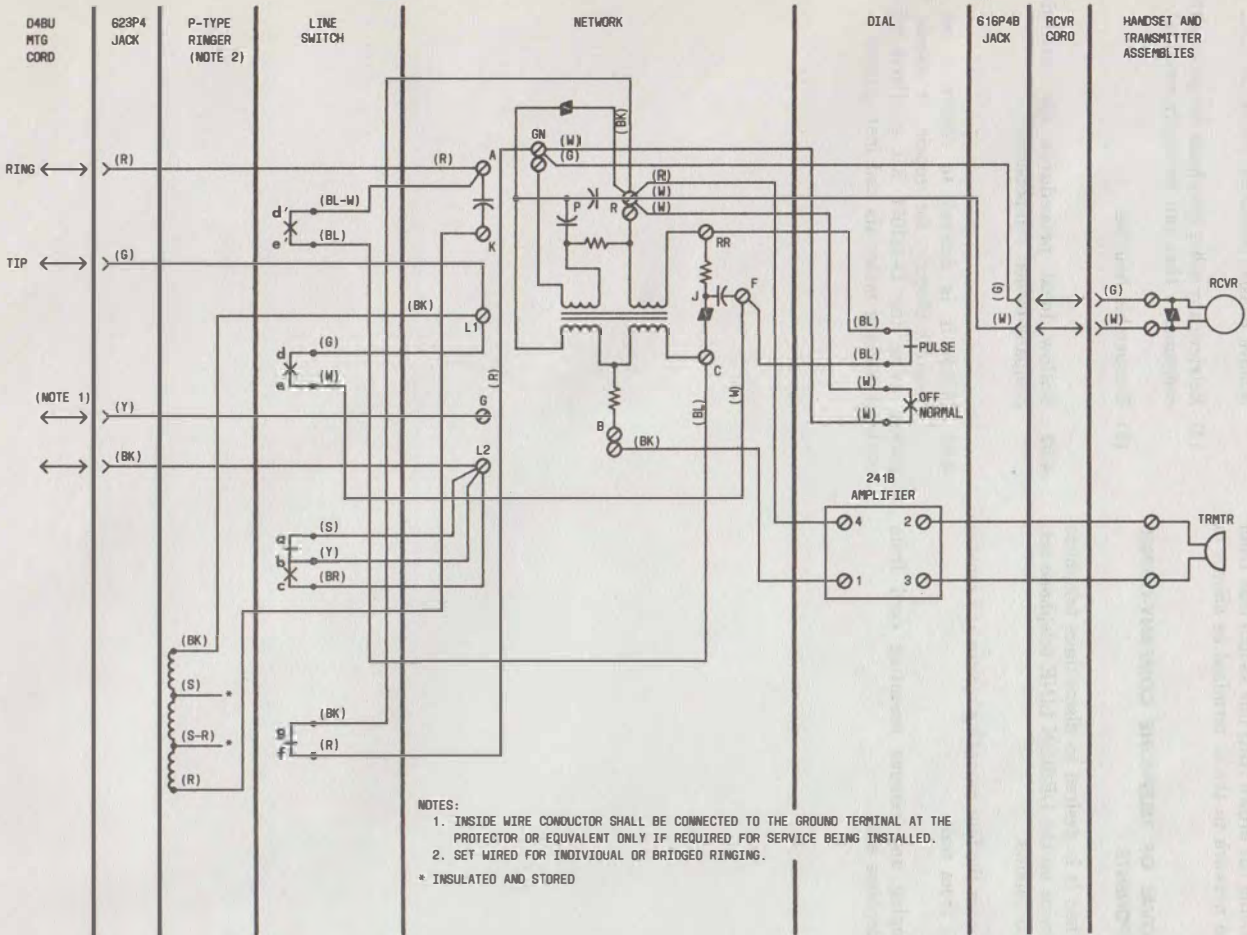


Fig. 4—952A1-03 Telephone Set, Connections

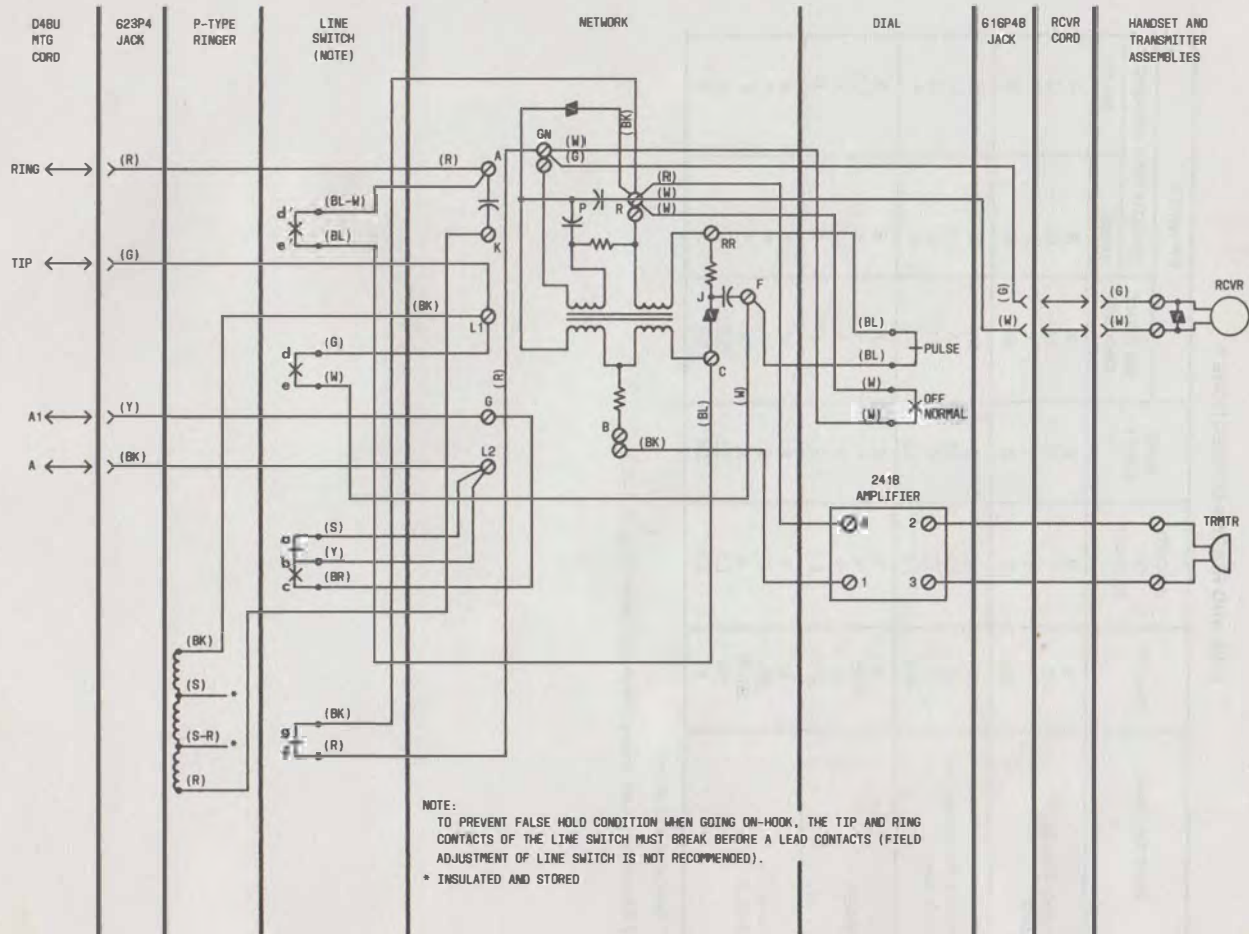


Fig. 5—952A1-03 Telephone Set, Connections For 1A1 or 1A2 KTS

TABLE A

LINE AND RINGER CONNECTIONS †

WIRE OR LEAD	COLOR	INDIVID. OR BRIDGED	RING PARTY	TIP PARTY		
				NO IDENT GROUND	IDENTIFYING GROUND	
					1000Ω	2650Ω
Inside Wire at Jack	R	R	R	R	R	R
	G	G	G	G	G	G
	Y	Y	Y	Y	Y	Y
	BK	B	B	B	B	B
623P4 Mounting Cord Jack Assy	R	A	A	L1	F	F
	G	L1	L1	A	L2	L2
	Y	G	G	G	G	G
	BK	L2	L2	L2	*	*
Ringer	R	K	K	K	K	K
	S-R	*	*	*	*	L1
	S	*	*	*	L1	*
	BK	L1	G	G	G	G
Line Switch	W	F	F	F	B	B
	BL	C	C	C	*	*
	BL-W	A	A	A	*	*
	BR	L2	L2	L2	C	C
	S	L2	L2	L2	A	A

* Insulated and stored.

† For access to set wiring follow applicable steps in Part 4.