

## SERVICE

### 702D TELEPHONE SETS

#### 1. GENERAL

##### 1.01 Reissue to:

- Remove information on 702DM telephone set (never manufactured)

- Show 702D telephone set MD

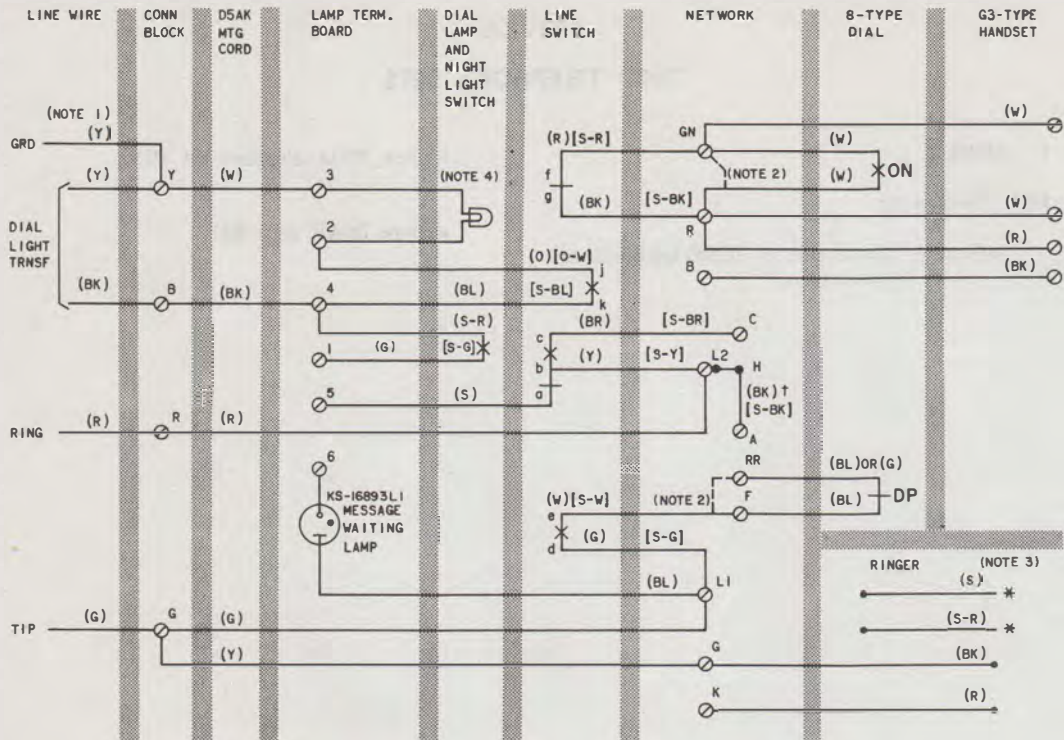
- Show D5AK cord MD.

#### NOTICE

Not for use or disclosure outside the  
Bell System except under written agreement

Printed in U.S.A.

Page 1



NOTES:

1. STATION GROUND SHALL BE PROVIDED FOR ALL INSTALLATIONS.
2. DASHED LINES INDICATE CONNECTIONS FOR MANUAL SERVICE. DIAL REMAINS ON SET.
3. WIRED FOR BRIDGED RINGING.
4. AVAILABLE AS D-179919 KIT OF PARTS (CONTAINS KS-19387L1 DIAL LAMP SOCKET AND INSTALLATION INSTRUCTIONS).

( ) CURRENT COLOR CODE  
 I | MD COLOR CODE

\* INSULATED AND STORED  
 † THIS LEAD GOES DIRECTLY TO L2 ON 4228F NET.

ON - OFF NORMAL  
 DP - DIAL PULSE

Fig. 1—702D (MD) Telephone Set, Connections Using D5AK (MD) Mounting Cord





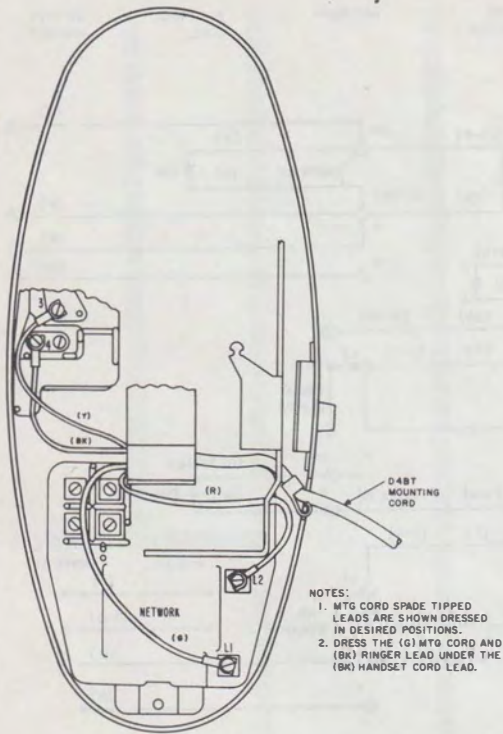


Fig. 3—Method of Terminating D4BT Mounting Cords in Sets Equipped with 4010-Type Network

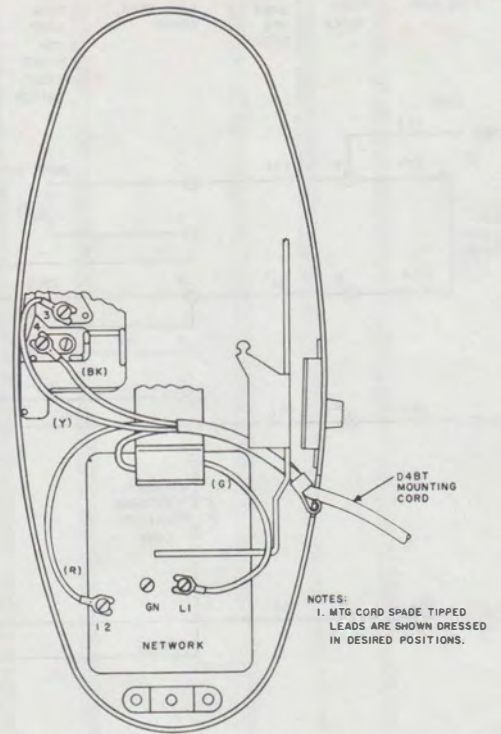


Fig. 4—Method of Terminating D4BT Mounting Cords in Sets Equipped With 4228-Type Network