

SERVICE

702B AND 702BM TELEPHONE SETS

1. GENERAL

- Show D5AK cord MD

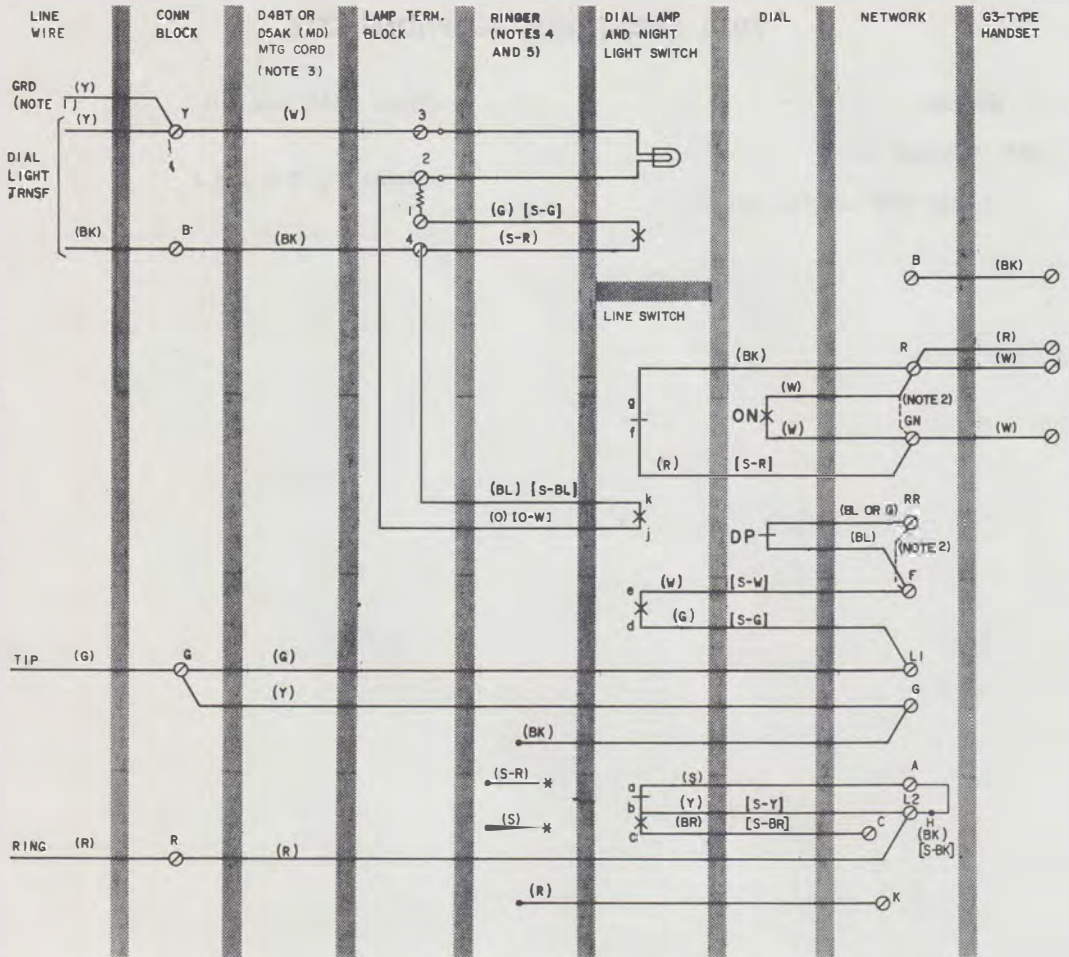
1.01 Reissued to:

- Show 702B telephone set MD

- Revise Fig. 2, 3, and 4.

NOTICE

Not for use or disclosure outside the
Bell System except under written agreement

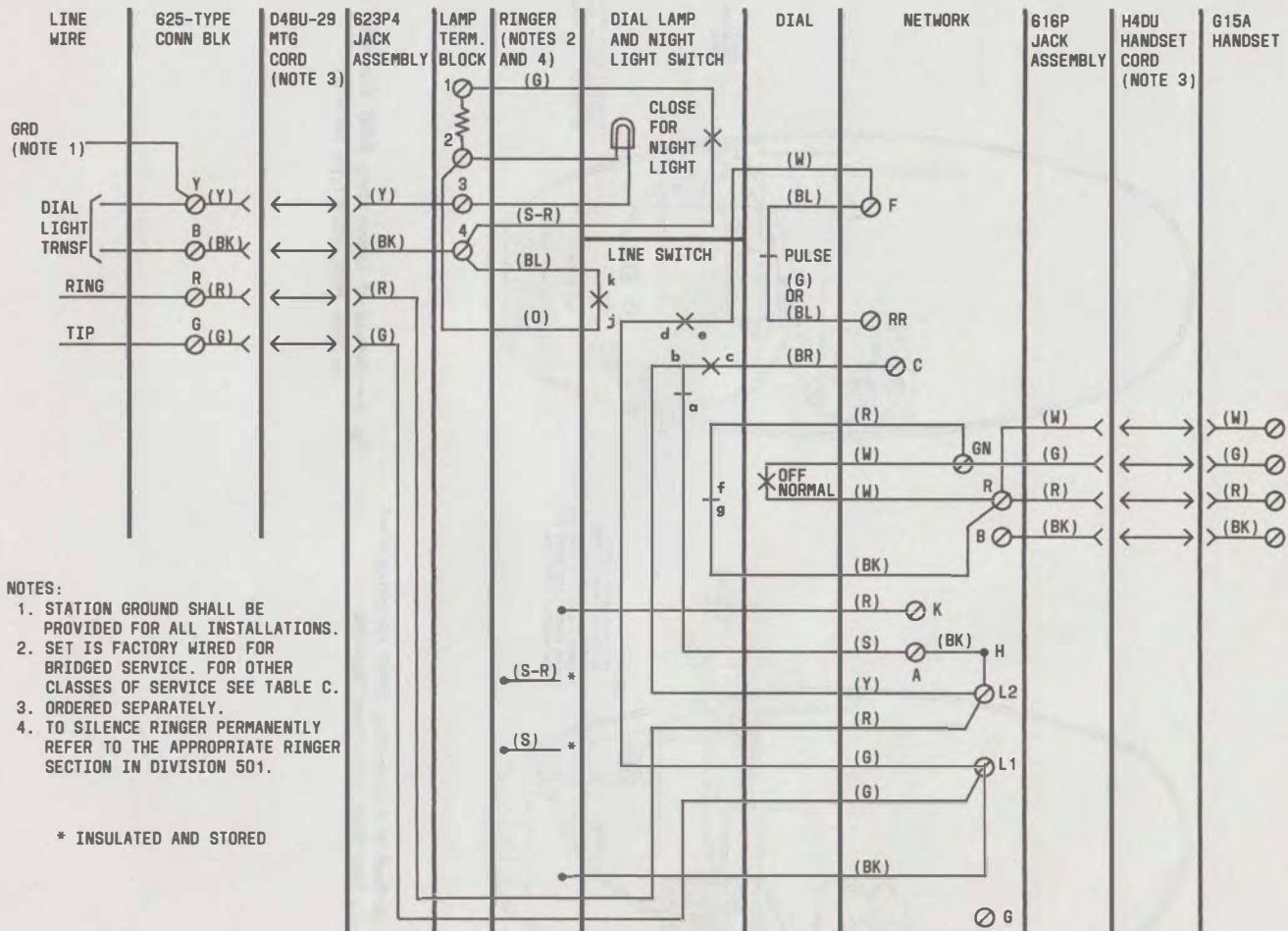


NOTES:

1. STATION GROUND SHALL BE PROVIDED FOR ALL INSTALLATIONS.
2. DASHED LINES INDICATE MANUAL SET CONNECTIONS.
3. CONNECTIONS SHOWN FOR D5AK MOUNTING CORD. IF D4BT MOUNTING CORD IS USED, REFER TO TABLE B.
4. WIRED FOR BRIDGED RINGING, SEE TABLE A OR B FOR OTHER CLASSES OF SERVICE.
5. TO SILENCE RINGER PERMANENTLY REFER TO THE APPROPRIATE RINGER SECTION IN DIVISION 501.

- () CURRENT COLOR CODE
- [] MD COLOR CODE
- * INSULATED AND STORED
- DP- DIAL PULSE
- ON- OFF NORMAL

Fig. 1—702B (MD) Telephone Set, Connections



NOTES:

1. STATION GROUND SHALL BE PROVIDED FOR ALL INSTALLATIONS.
2. SET IS FACTORY WIRED FOR BRIDGED SERVICE. FOR OTHER CLASSES OF SERVICE SEE TABLE C.
3. ORDERED SEPARATELY.
4. TO SILENCE RINGER PERMANENTLY REFER TO THE APPROPRIATE RINGER SECTION IN DIVISION 501.

* INSULATED AND STORED

Fig. 2—702BM Telephone Set, Connections

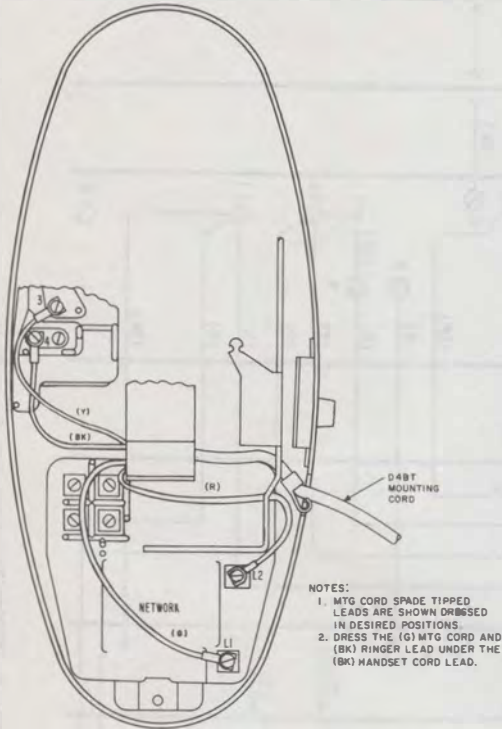


Fig. 3—Method of Terminating D4BT Mounting Cord on Sets With 4010-Type Network

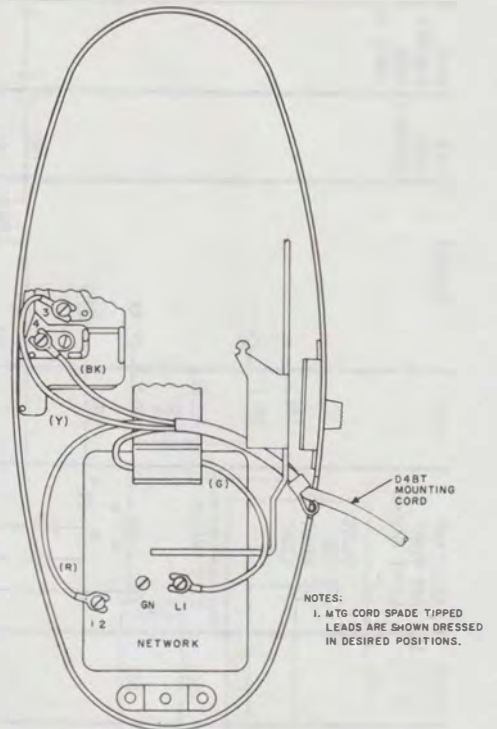


Fig. 4—Method of Terminating D4BT Mounting Cord on Sets With 4228-Type Network

◆ TABLE A ◆

LINE AND RINGER CONNECTIONS
702B (MD) TELEPHONE SET WITH D5AK (MD) MOUNTING CORD

WIRE OR LEAD		INDIVIDUAL OR BRIDGED †	RING PARTY ‡	TIP PARTY		
				NO IDENT GRD	IDENTIFYING GROUND	
					1000 OHMS	2650 OHMS
Inside Wire at Conn Block	Ring	R	R	R	R	R
	Tip	G	G	G	G	G
	Grd	Y	Y	Y	Y	Y
Dial Light Transformer	1	Y	Y	Y	Y	Y
	2	B	B	B	B	B
D5AK Mtg Cord at Conn Block	(R)	R	R	G	G	G
	(G)	G	G	R	R	R
	(Y)	G	Y	Y	Y	Y
	(BK)	B	B	B	B	B
	(W)	Y	Y	Y	Y	Y
D5AK Mtg Cord at Set Terminals (Note 2)	(R)	L2	L2	L2	L2	L2
	(G)	L1	L1	L1	F	F
	(Y)	G	G	G	G	G
	(BK)	4†	4†	4†	4†	4†
	(W)	3†	3†	3†	3†	3†
Ringer Leads (Note 1)	(R)	K	K	K	K	K
	(BK)	G	G	G	G	G
	(S)	*	*	*	L1	*
	(S-R)	*	*	*	*	L1
Line Switch	(W)	F	F	F	B	B
Strap from H	(BK)	A	A	A	*	*

* Insulated and stored.

† Terminals on lamp terminal block.

‡ Factory-wired for bridged or ring party

Note: 1. To silence ringer for all classes of service, refer to the appropriate ringer section in Division 501.

2. When connecting the D5AK mounting cord leads for tip party identifying ground, use D-161488 connectors and M1W straps as required to extend conductor leads.

♦ TABLE B ♦

LINE AND RINGER CONNECTIONS

702B (MD) TELEPHONE SET WITH D4BT MOUNTING CORD

WIRE OR LEAD		INDIVIDUAL OR BRIDGED	RING PARTY	TIP PARTY		
				NO IDENT GRD	IDENTIFYING GROUND	
					1000 OHMS	2650 OHMS
Inside Wire at Conn Block	Ring	R	R	R	R	R
	Tip	G	G	G	G	G
	Grd	Y	Y	Y	Y	Y
Dial Light Transformer	1	Y	Y	Y	Y	Y
	2	B	B	B	B	B
D4BT Mtg Cord at Conn Block	(R)	R	R	G	G	G
	(G)	G	G	R	R	R
	(Y)	Y	Y	Y	Y	Y
	(BK)	B	B	B	B	B
D4BT Mtg Cord at Set Terminals	(R)	L2	L2	L2	L2	L2
	(G)	L1	L1	L1	F	F
	(Y)	3†	3†	3†	3†	3†
	(BK)	4†	4†	4†	4†	4†
Ringer Leads (Note)	(R)	K	K	K	K	K
	(BK)	L1	3†	3†	3†	3†
	(S)	*	*	*	L1	*
	(S-R)	*	*	*	*	L1
Line Switch	(W)	F	F	F	B	B
Strap from H	(BK)	A	A	A	*	*

* Insulated and stored.

† Terminals on lamp terminal block.

Note: To silence ringer for all classes of service, refer to the appropriate ringer section in Division 501.

♦TABLE C♦

702BM TELEPHONE SET LINE AND RINGER CONNECTIONS

WIRE OR LEAD		INDIVIDUAL OR BRIDGED (NOTE 3)	RING PARTY	TIP PARTY		
				NO IDENT GRD	IDENTIFYING GROUND (NOTE 1)	
					1000 OHMS	2650 OHMS
Dial Light Transformer	1	Y	Y	Y	Y	Y
	2	B	B	B	B	B
623P4 Jack Assembly in Set	(R)	L2	L2	L1	F	F
	(G)	L1	L1	L2	L2	L2
	(BK)	4†	4†	4†	4†	4†
	(Y)	3†	3†	3†	3†	3†
Ringer Leads (Note 2)	(R)	K	K	K	K	K
	(BK)	L1	3†	3†	3†	3†
	(S)	*	*	*	L1	*
	(S-R)	*	*	*	*	L1
Line Switch	(W)	F	F	F	B	B
Strap from H of Net.	(BK)	A	A	A	*	*

*Insulated and stored.

†Terminals on lamp terminal block.

Notes:

1. For tip party service with identifying ground, remove insulate and store (BK) strap between network terminals A and H.
2. To silence ringer for all classes of service, refer to the appropriate ringer section in Division 501.
3. Sets are factory-wired for bridged service.