

RINGERS—C-TYPE MAINTENANCE

1. GENERAL

1.001 This addendum supplements Section 501-250-303, Issue 3.

1.002 This addendum is issued to:

- Add information in the C4B ringer
- Add Fig. 7.

1. GENERAL

The following change applies to Part 1 of this section:

(a) 1.07—added

(b) Fig. 7—added

1.07 When tests or inspection in this section call for replacement of a C4A ringer, use either a C4A or C4B except at station requiring tip party identification, in which case a C4A must be used. The ringers are identical except the C4B does not have the slate and slate-red leads, which may require wiring charges. Fig. 7 shows typical connections and suggested changes.

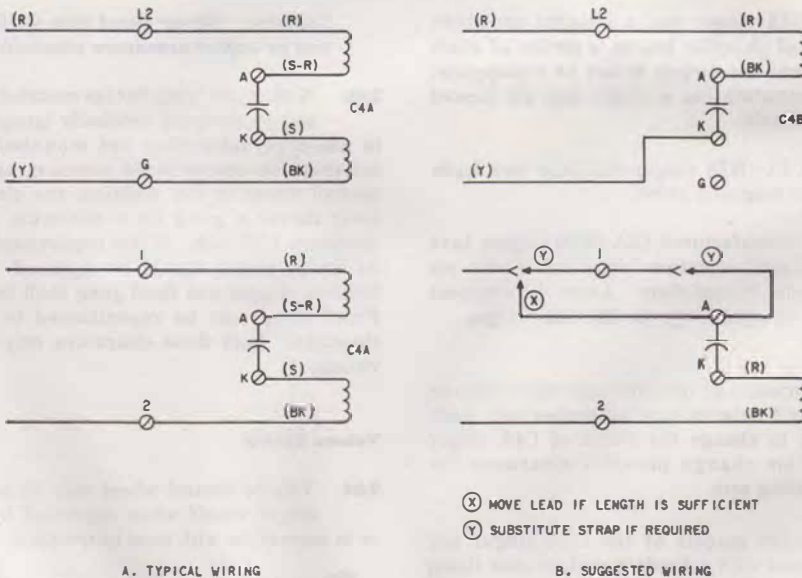


Fig. 7—Wiring Arrangements With C4-Type Ringer