

**INTERPHONE SYSTEM – 1A HOME  
1558D TELEPHONE SET  
CONNECTIONS AND MAINTENANCE**

**1. CONNECTION INDEX**

Table A — 1558D Telephone Set Modifications  
For 1A Home Interphone

Fig. 1 — 1558D Telephone Set Wired For 1A  
Home Interphone

Fig. 2 — 1558D Telephone Set Connected To  
1A Home Interphone System

**TABLE A**

**1558D TELEPHONE SET MODIFICATIONS  
FOR 1A HOME INTERPHONE**

WIRE OR LEAD		REMOVE FROM	CONNECT TO
Exclusion Key (Hold)	BK	2	*
	W	E2	2
	BR	E1	1
	Y	E1	*
	O	5	*
664D Transmitter	R		13
	S		L1
	W		14
	Bracket		14
Line Switch	S	14	L1
Strap			4 to 8

\* Insulate and store.

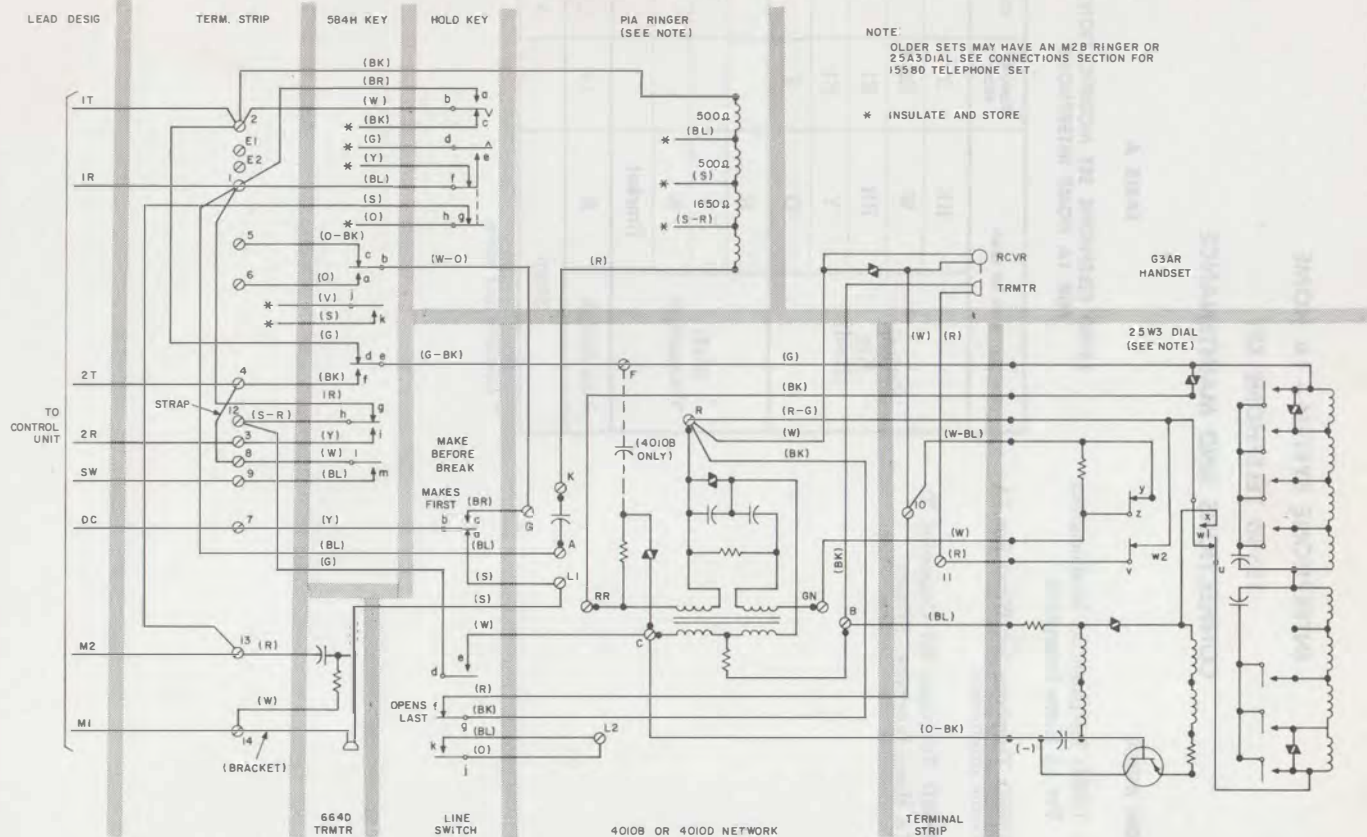


Fig. 1—1558D Telephone Set Wired for 1A Home Interphone

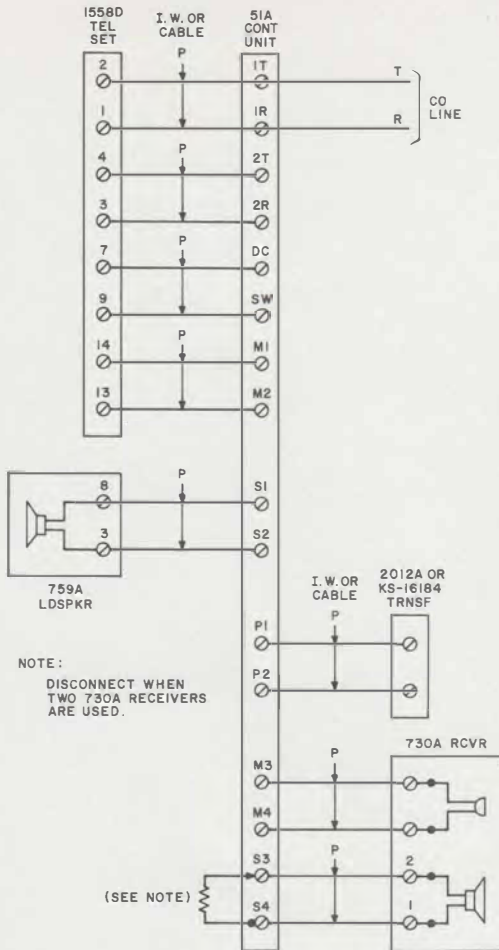


Fig. 2—1558D Telephone Set Connected to 1A Home Interphone System

## 2. MAINTENANCE

2.01 In order to convert the 1558D telephone set for 1A home interphone, a 664D transmitter (ordered separately) must be installed in the telephone set (Fig. 3) and the set rewired per Table A and Fig. 1.

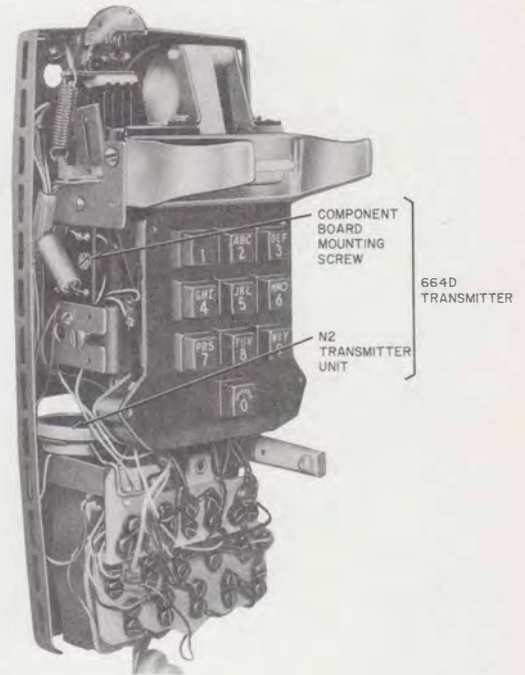


Fig. 3—664D Transmitter Unit Installed in 1558D Telephone Set