

921A, 921B, 2921A, AND 2921B TELEPHONE SETS IDENTIFICATION, INSTALLATION, AND CONNECTIONS

1. GENERAL

1.01 This section contains information for the 921A (MD) (Fig. 1), 2921A (MD), 921B (MD), and 2921B (MD) (Fig. 2) DESIGN LINE* telephone (*Accent*) sets. The information contained in this section is retained for existing installations only.

1.02 This section is reissued to show all 921B and 2921B telephone sets MD.

1.03 The 921B and 2921B telephone sets are like the 921A and 2921A sets, respectively, except the B codes are approximately 1-inch lower in height to give a low profile appearance and the internal components have been rearranged to screw mount to the plastic base. The terminal board used on most 921A and 2921A sets is not used on the 921B and 2921B telephone sets.



Fig. 1—921A (MD) DESIGN LINE Telephone Set

1.04 The customer's premises must be properly wired with an appropriate connecting block or jack in order to accept the D4BU-29 plug-ended mounting cord.

*Trademark AT&TCo.



Fig. 2—2921B (MD) DESIGN LINE Telephone Set

Warning: Telephone apparatus or wiring shall not be installed in a location where minimum separation from other wiring as specified in Section 460-300-149 cannot be maintained.

2. IDENTIFICATION

2.01 The 921A or B (rotary dial) and 2921A or B (TOUCH-TONE® dial) are DESIGN LINE telephone sets. The customer buys the housing and handset from the telephone company and the telephone company retains ownership of the transmission and signaling components.

2.02 These telephone sets are primarily used on single line or two-party service; however, they can be used on four- and eight-party service if a 28A ringer isolator is provided. For connection information on the ringer isolator, refer to Section 501-375-101.

NOTICE

Not for use or disclosure outside the
Bell System except under written agreement

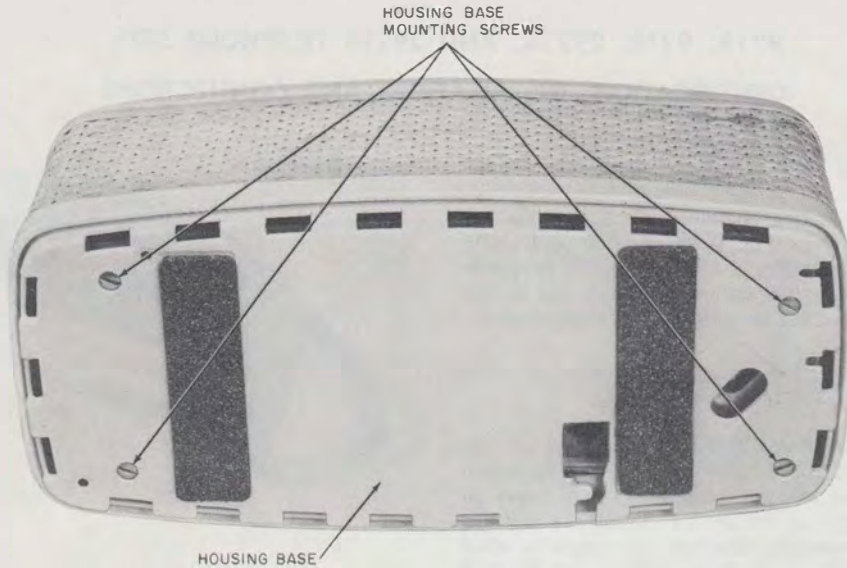


Fig. 3—Removing Plastic Housing Base (921A, 921B, 2921A, 2921B Telephone Set)

2.03 *Optional Components (order separately):*

- D-180229 Kit of Parts [Polarity Guard for 2921A manufactured prior to February 1975 (Table F) Fig. 5]
- 819041708 (P-90D170) Guard Assembly (Polarity Guard for 2921A sets manufactured after January 1975 and for the 2921B sets) (Table G).

3. INSTALLATION AND CONNECTIONS

3.01 These telephone sets are wired for bridged ringing. The P1A ringer was shipped from the factory with the bias spring in the low bias position. To connect the telephone set, plug the mounting cord into a 625-type connecting block. If there is an existing 548A jack or equivalent, use the 225A adapter or 1A converter, ordered separately.

3.02 The internal connections for the 921-type and 2921-type telephone sets, for nonkey system use, are shown in Fig. 6 and 7, respectively.

3.03 Connections for use with 1A KTS do not require any telephone set modifications and are wired same as Fig. 6 and 7.

3.04 Connections for use with 1A1 or 1A2 KTS are shown in Fig. 8 for 921-type telephone set, and Fig. 9 for 2921-type telephone set. Table D and E includes necessary wiring and modifications required for 1A1 or 1A2 key telephone system use.

3.05 To gain access to interior of these sets for wiring changes, refer to Part 4.

3.06 To install polarity guard in a pre February 1975 2921A telephone set or in later 2921A sets or any 2921B telephone set when instructed by local administrative practices or procedures for end-to-end signaling purposes when battery and ground reversals are encountered, proceed as follows.

- (1) Remove housing, refer to Fig. 3.
- (2) Loosen dial mounting screws.

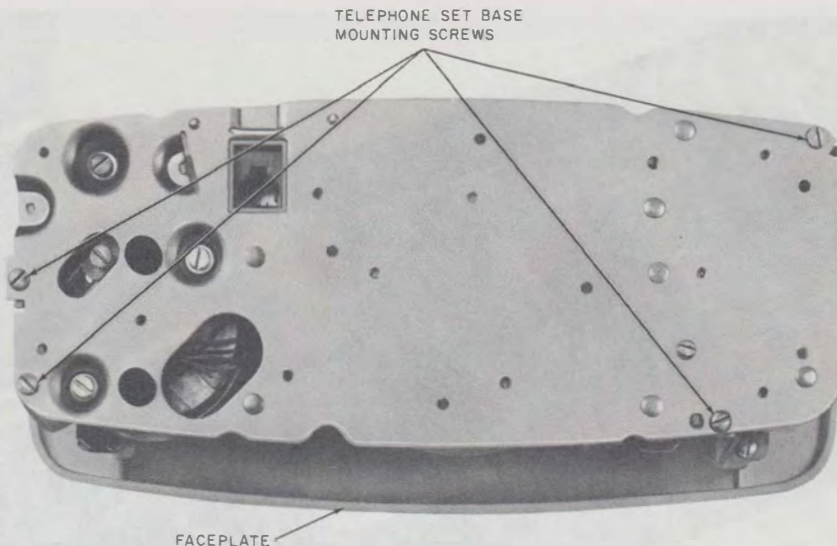


Fig. 4—Removing Telephone Set Base From Faceplate

(3) Remove dial.

(4) Make connections as shown in Table F for telephone sets manufactured prior to February 1975, and Table G for telephone sets manufactured after January 1975.

(5) In 2921A telephone sets the Guard Assembly (Fig. 5) mounts on the right hand side of the dial mounting bracket with the screw contained in the D-180229 Kit of Parts. The bent tabs on the guard assembly bracket should fit over the back edge of the portion of the dial mounting bracket where the telephone set terminal board mounts. In this location the guard assembly is suspended over the ringer gong with the component facing up.

Note: The retainer and terminal board in the D-180229 Kit of Parts are not used.

(6) In 2921B telephone sets, the guard assembly mounts below the TOUCH-TONE dial on a plastic mounting boss.

(7) Reinstall dial and replace the housing.

3.07 Line and Ringer Connections.

- (1) For single line and two-party service, refer to Table A, B, or C.
- (2) For adjustments and ringer cutoff feature of the P1A ringer, refer to Section 501-259-101.

4. REMOVAL OF TELEPHONE COMPANY-OWNED COMPONENTS

4.01 When it is desired to discontinue telephone service of the 921A, B or 2921A, B DESIGN LINE telephone set, proceed as follows.

Note: Remove the telephone company-owned components that can be easily removed.

- (1) Remove handset cord and mounting cord from the telephone set.

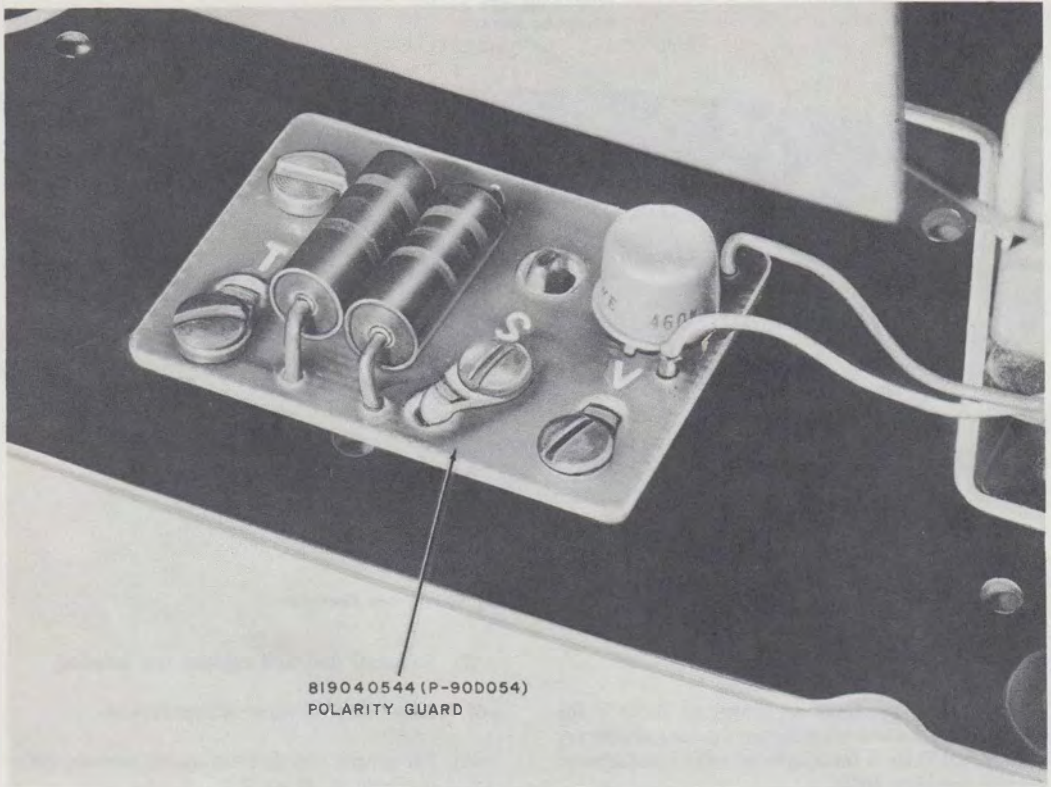


Fig. 5—D-180229 Kit of Parts for the 2921A Telephone Set Manufactured Prior to February 1975

(2) Remove the four screws on the bottom of the plastic base and withdraw the base. Refer to Fig. 3.

(3) Remove the four screws on the bottom of the telephone set base and withdraw the base from the faceplate and attached brackets (Fig. 4).

(4) After removing telephone company-owned components, reassemble housing base to the two brackets mounted on the faceplate.

4.02 Follow local procedures for returning telephone company-owned components.

4.03 When it is necessary to return a set to Western Electric for repairs, it should be packed using the D-180600 Kit of Parts which contains packing material and instructions.



The two mounting brackets attached to the faceplate are not to be removed.

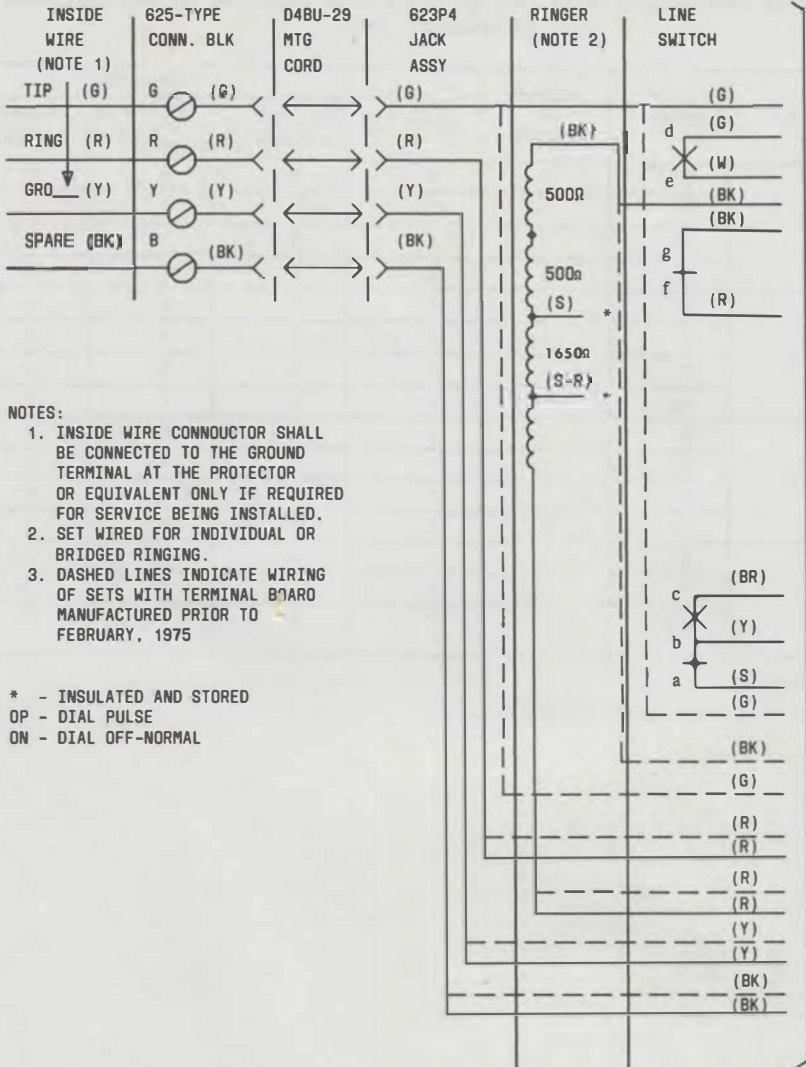
TABLE A
LINE AND RINGER CONNECTIONS [921A (MD) OR 2921A (MD) TELEPHONE SET MANUFACTURED PRIOR TO FEBRUARY, 1975]†

WIRE OR LEAD	COLOR	INDIVID. OR BRIDGED	RING PARTY	TIP PARTY		
				NO IDENT GROUND	IDENTIFYING GROUND	
					1000Ω	2650Ω
Inside Wire at Conn Blk	R	R	R	R	R	R
	G	G	G	G	G	G
	Y	Y	Y	Y	Y	Y
	BK	B	B	B	B	B
623P4 Line Cord Jack Assy	R	1	1	2	6	6
	G	2	2	1	4	4
	Y	3	3	3	3	3
	BK	4	4	4	*	*
Ringer	R	5	5	5	5	5
	S-R	*	*	*	*	2
	S	*	*	*	2	*
	BK	2	3	3	3	3
Line Switch	Y	A	A	A	L2	L2
	W	F	F	C	B	B
	BR ‡	C	C	F	F	F

* Insulated and stored.

† For access to set wiring follow applicable steps in Part 4.

‡ 2921A telephone set only.



- NOTES:
1. INSIDE WIRE CONDUCTOR SHALL BE CONNECTED TO THE GROUND TERMINAL AT THE PROTECTOR OR EQUIVALENT ONLY IF REQUIRED FOR SERVICE BEING INSTALLED.
 2. SET WIRED FOR INDIVIDUAL OR BRIDGED RINGING.
 3. DASHED LINES INDICATE WIRING OF SETS WITH TERMINAL BOARD MANUFACTURED PRIOR TO FEBRUARY, 1975

* - INSULATED AND STORED
 OP - DIAL PULSE
 ON - DIAL OFF-NORMAL

TO SHEET 2

Fig. 6—921A (MD) or 921B (MD) Telephone Set, Connections (Non-KTS) (Sheet 1 of 2)

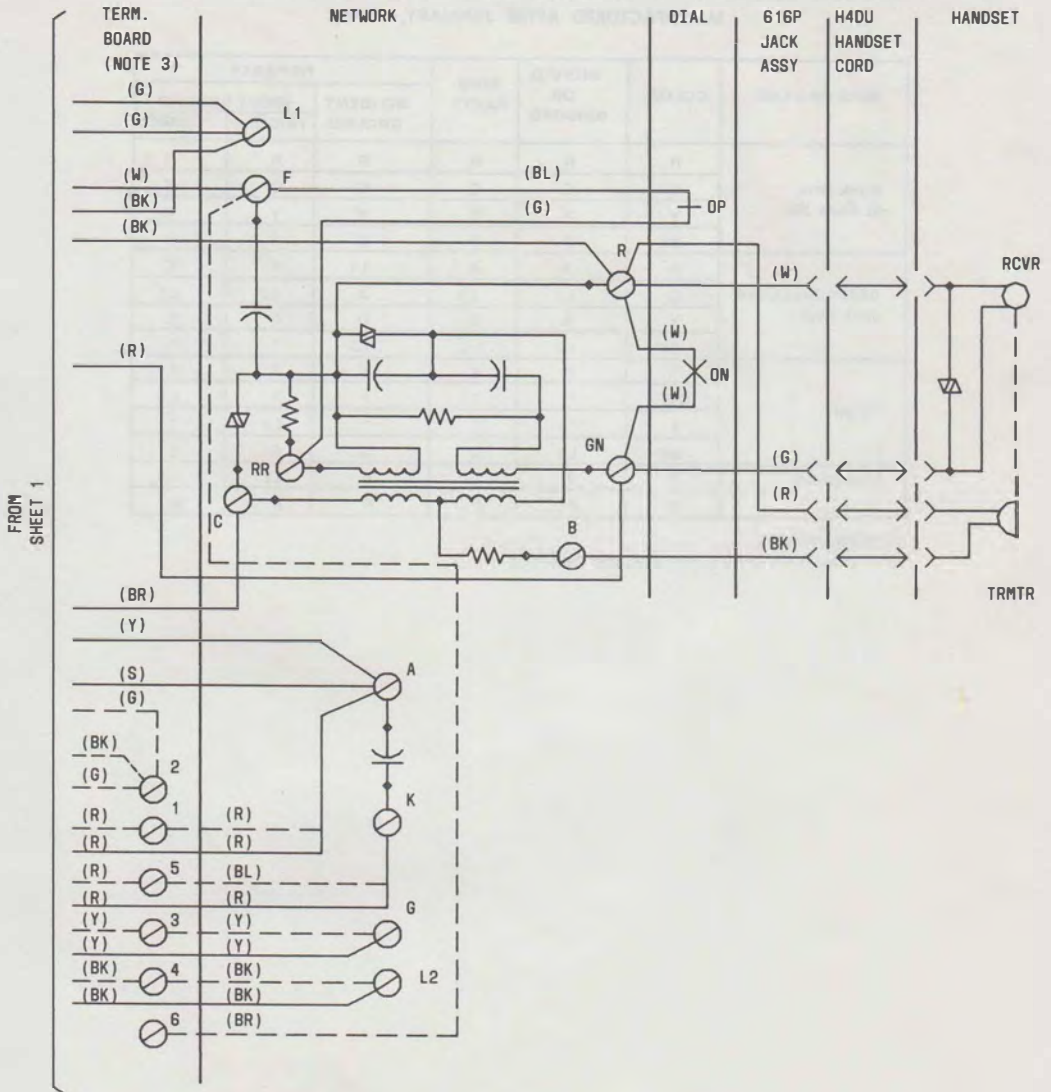


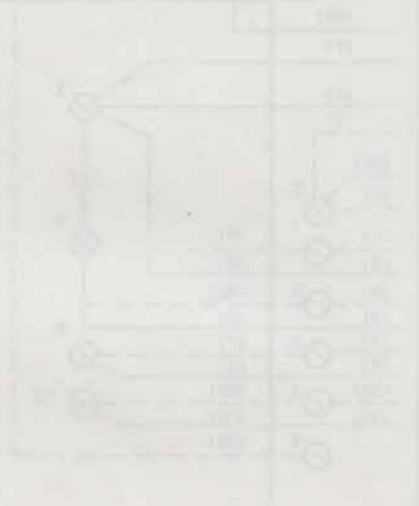
Fig. 6—921A (MD) or 921B (MD) Telephone Set, Connections (Non-KTS) (Sheet 2 of 2)

TABLE B
LINE AND RINGER CONNECTIONS [921A (MD) OR 921B (MD) TELEPHONE SET
MANUFACTURED AFTER JANUARY, 1975]†

WIRE OR LEAD	COLOR	INDIVID. OR BRIDGED	RING PARTY	TIP PARTY		
				NO IDENT GROUND	IDENT GROUND	
					1000Ω	2650Ω
Inside Wire at Conn Blk	R	R	R	R	R	R
	G	G	G	G	G	G
	Y	Y	Y	Y	Y	Y
	BK	B	B	B	B	B
623P4 Line Cord Jack Assy	R	A	A	L1	F	F
	G	L1	L1	A	L2	L2
	Y	G	G	G	G	G
	BK	L2	L2	L2	*	*
Ringer	R	K	K	K	K	K
	S-R	*	*	*	*	L1
	S	*	*	*	L1	*
	BK	L1	G	G	G	G
Line Switch	Y	A	A	A	L2	L2
	W	F	F	F	B	B

*Insulate and store.

†For access to set wiring follow applicable steps in Part 4.



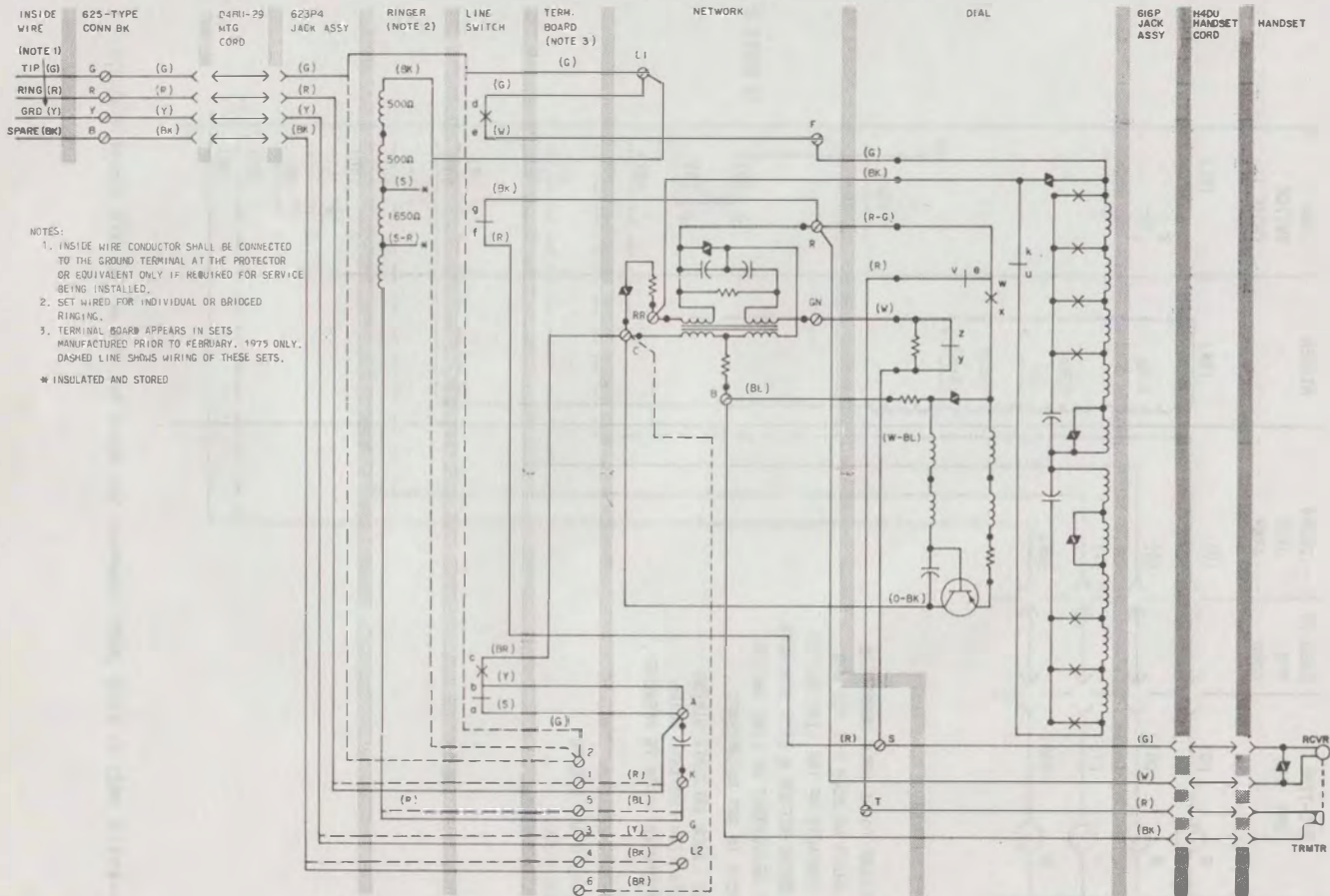
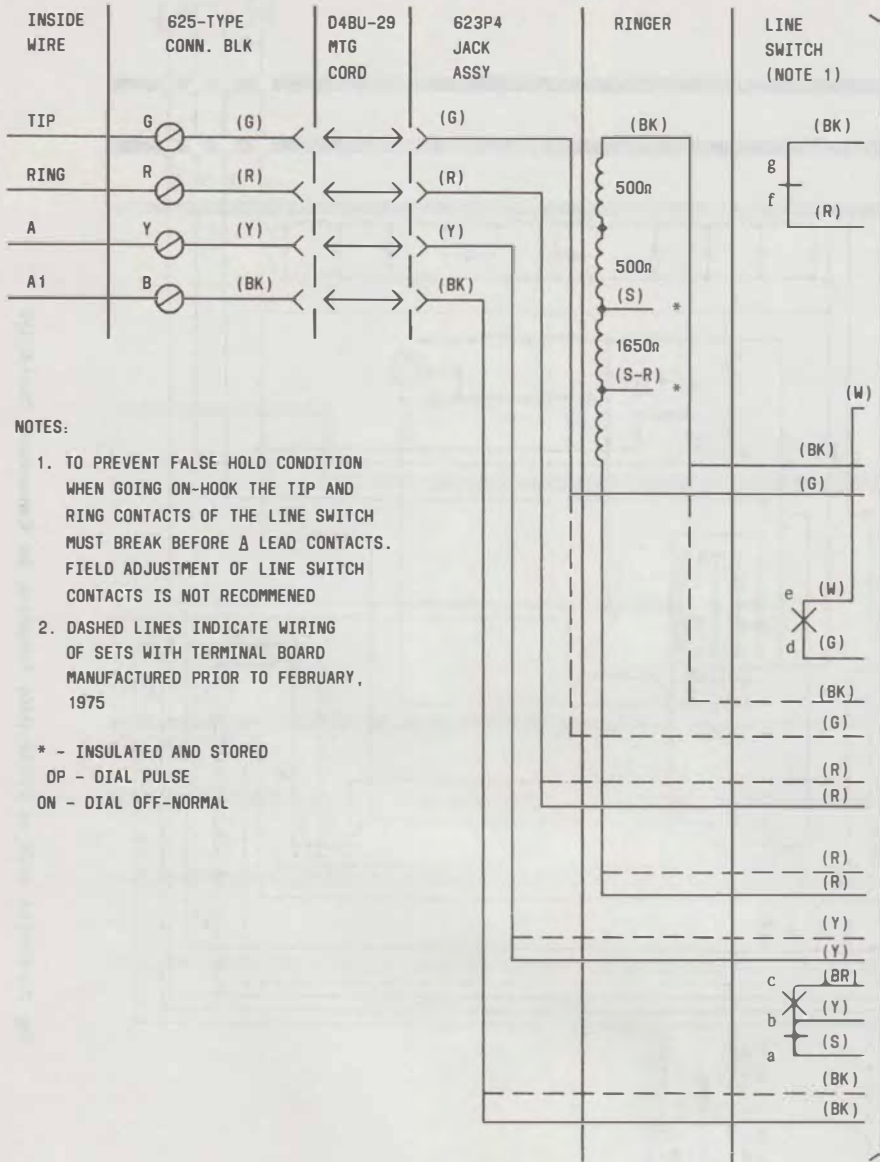


Fig. 7—2921A (MD) or 2921B (MD) Telephone Set Connections (Non-KTS)



NOTES:

1. TO PREVENT FALSE HOLD CONDITION WHEN GOING ON-HOOK THE TIP AND RING CONTACTS OF THE LINE SWITCH MUST BREAK BEFORE A LEAD CONTACTS. FIELD ADJUSTMENT OF LINE SWITCH CONTACTS IS NOT RECOMMENDED
2. DASHED LINES INDICATE WIRING OF SETS WITH TERMINAL BOARD MANUFACTURED PRIOR TO FEBRUARY, 1975

* - INSULATED AND STORED
 DP - DIAL PULSE
 ON - DIAL OFF-NORMAL

Fig. 8—921A (MD) or 921B (MD) Telephone Set Wired for 1A1 or 1A2 KTS (Sheet 1 of 2)

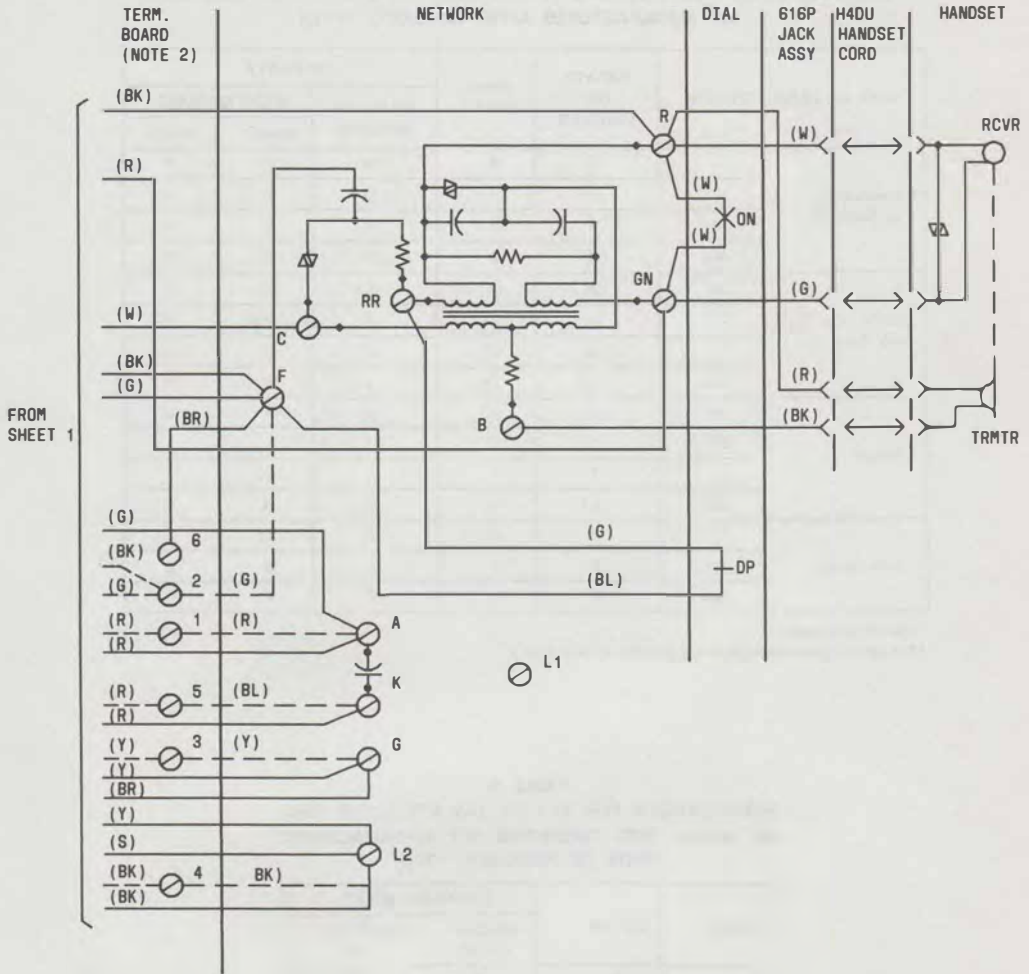


Fig. 8—921A (MD) or 921B (MD) Telephone Set Wired for 1A1 or 1A2 KTS (Sheet 2 of 2)

TABLE C
LINE AND RINGER CONNECTIONS [2921A (MD) OR 2921B (MD) TELEPHONE
SET MANUFACTURED AFTER JANUARY, 1975]†

WIRE OR LEAD	COLOR	INDIVID. OR BRIDGED	RING PARTY	TIP PARTY		
				NO IDENT GROUND	IDENT GROUND	
					1000Ω	2650Ω
Inside Wire at Conn Bk	R	R	R	R	R	R
	G	G	G	G	G	G
	Y	Y	Y	Y	Y	Y
	BK	B	B	B	B	B
623P4 Line Cord Jack Assy	R	A	A	L1	C	C
	G	L1	L1	A	L2	L2
	Y	G	G	G	G	G
	BK	L2	L2	L2	*	*
Ringer	R	K	K	K	K	K
	SR	*	*	*	*	L1
	S	*	*	*	L1	*
	BK	L1	G	G	G	G
Line Switch	Y	A	A	A	L2	L2
	W	F	F	C	B	B
	BR	C	C	F	F	F

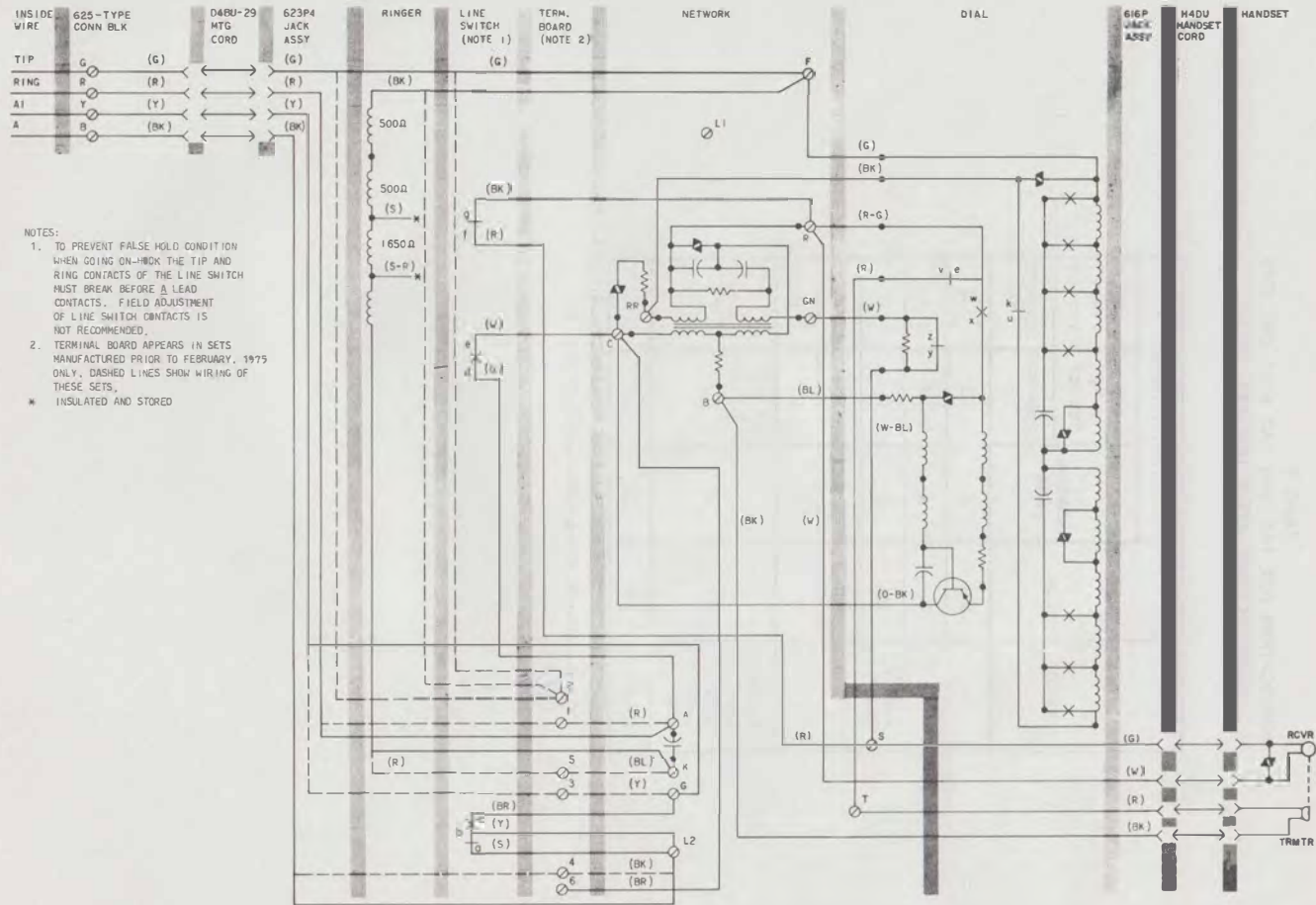
* Insulate and store.

† For access to set wiring follow applicable steps in Part 4.

TABLE D
MODIFICATIONS FOR 1A1 OR 1A2 KTS [921A (MD)
OR 2921A (MD) TELEPHONE SET MANUFACTURED
PRIOR TO FEBRUARY, 1975]

LEAD	COLOR	TERMINAL BOARD	
		REMOVE FROM	CONNECT TO
Line Switch	S	A	L2
	Y	A	L2
	BR	C	G
	G	L1	A
	W	F	C
Straps	G	L1	F

* For access to set wiring follow applicable steps in Part 4.



NOTES:

1. TO PREVENT FALSE HOLD CONDITION WHEN GOING ON-HOOK THE TIP AND RING CONTACTS OF THE LINE SWITCH MUST BREAK BEFORE A LEAD CONTACTS. FIELD ADJUSTMENT OF LINE SWITCH CONTACTS IS NOT RECOMMENDED.
 2. TERMINAL BOARD APPEARS IN SETS MANUFACTURED PRIOR TO FEBRUARY, 1975 ONLY. DASHED LINES SHOW WIRING OF THESE SETS.
- * INSULATED AND STORED

Fig. 9—2921A (MD) or 2921B (MD) Telephone Set Wired for 1A1 or 1A2 KTS4

TABLE E
MODIFICATION FOR 1A1 AND 1A2 KTS* (ALL SETS
MANUFACTURED AFTER JANUARY, 1975)

LEAD	COLOR	NET. TERMINAL		
		REMOVE FROM	921-TYPE TEL SET	2921-TYPE TEL SET
			CONNECT TO	CONNECT TO
Line Switch	S	A	L2	L2
	Y	A	L2	L2
	BR	C	G	G
	G	L1	A	A
	W	F	C	C
623P4 Line Cord Jack Assy.	G	L1	F	F
Ringer	BK	L1	F	F

* For access to set wiring follow applicable steps in Part 4.

TABLE F
POLARITY GUARD CONNECTIONS FOR 2921A (MD) TELEPHONE
SET MANUFACTURED PRIOR TO FEBRUARY, 1975*

WIRE OR LEAD	COLOR	REMOVE FROM		CONNECT TO	
		NET.	TEL SET TERM. BOARD	NET.	TEL SET TERM. BOARD
Dial	BK	RR			7
Line Switch	BR†	C			8
	W‡				
623P4 Line Cord Jack Assy	R§		6		
Polarity Guard	R				7
	BK				8
	G			RR	
	W			C	

* For access to set wiring follow applicable steps in Part 4.

† If wired for ring party or bridged service.

‡ If wired for tip party with no identification ground, 1A1 of 1A2 KTS.

§ If wired for tip party with identification ground.

Note: For use when specified by local instructions for end-to-end signaling installations.

TABLE G
POLARITY GUARD CONNECTIONS FOR 2921A (MD)
OR 2921B (MD) TELEPHONE SET MANUFACTURED
AFTER JANUARY, 1975*

LEAD	COLOR	DIS-CONNECT FROM	CONNECT TO	
		NET.	NET.	POLARITY GUARD
Dial	BK	RR		T
Line Switch	BR†	C		S
	W‡			
623P4 Line Cord Jack Assy.	R§			
Polarity Guard	G		RR	
	W		C	

* For access to set wiring follow applicable steps in Part 4.

† If wired for bridged service or ring party.

‡ If wired for tip party with no identification ground 1A1 KTS, or 1A2 KTS.

§ If wired for tip party with identification ground.