

TELEPHONE SETS

2664-TYPE

CONNECTIONS

1. GENERAL

1.01 These sets are supplied shop wired as 2664A1 only. For conversion to 2664A2 or 2664A3 the appropriate key must be ordered and installed separately.

1.02 These sets are supplied with headset jacks and 242B amplifier shop wired to provide for headset operation. A 52- or 53-type headset must be ordered separately.

2. CONNECTION INDEX

Table A — 1A, 1A1, and 1A2 Conversion

Table B — Pickup-Signal Key Conversion, 2664A1 Telephone Set

Table C — Pickup-Signal Key Conversion, 2664A2 Telephone Set

Table D — Pickup-Signal Key Conversion, 2664A3 Telephone Set


Table E — P-90D012 Polarity Guard Connections

Table F — Conductor Assignments Using 66E-Type Connector Block or A25B Connector Cable

Fig. 1 — 2664-Type Telephone Sets, Connections

TABLE A

1A, 1A1, AND 1A2 CONVERSION

KEY TEL SYSTEM	STATION BUSY LAMP	LEADS										WITHOUT HOLD — (598A KEY) — ADD STRAP	DIODE KS-15724 LIST 1
		HEADSET KEY ASSY		SWITCH HOOK		KEY							
		(V-BR)	(BR-V)	(Y)	(BR)	(R)	(BK-BL)	(G-W)	(W-G)	(S-BK)	S-Y		
1A1 or 1A2	Without	A1	A	A1	A	R	A2	A	*	*	*	A2 to A	
1A		SG	A	SG	A	R1	*	*	A2	R1	R	R to R1	
1A1 or 1A2	With	A1	BL	A1	BL	R	A2	A	*	*	*	A2 to A	A to BL 
1A		SG	BL	SG	BL	R1	*	*	A2	R1	R	R to R1	

\*Insulate and store.

TABLE B

## PICKUP-SIGNAL KEY CONVERSION, 2664A1 TELEPHONE SET

CONVERSION OPTIONS	599A KEY LEADS				
	(S-W)	(G-R)	(BL-BK)	(BR-BK)	(BR-W)
HPPPPP	A2	A2	A2	A2	5
HPPPPS	A2	A2	A2	SG	5
HPPPSS	A2	A2	SG	SG	5
HPPSSS	A2	SG	SG	SG	5
HPPPP*S*	A2	A2	S1	SG	S1
HPPP*P*S*	A2	S1	S1	SG	S1
HPP*P*P*S*	S1	S1	S1	SG	S1

**Note:** All line key positions, as furnished, are pickup keys. To convert from pickup (locking) to signal (nonlocking) remove the P-10E837 screw from the plunger at the key position being converted.

\*These arrangements are used on private or intercommunicating lines with a common signal key.

TABLE C

## PICKUP-SIGNAL KEY CONVERSION, 2664A2 TELEPHONE SET

CONVERSION OPTIONS	598A KEY LEADS					
	(S-W)	(G-R)	(BL-BK)	(BR-BK)	(O-Y)	(R-S)
PPPPPP	A2	A2	A2	A2	A2	6
PPPPPS	A2	A2	A2	A2	SG	6
PPPPSS	A2	A2	A2	SG	SG	6
PPSSSS	A2	A2	SG	SG	SG	6
PPSSSS	A2	SG	SG	SG	SG	6
PPPPP*S*	A2	A2	A2	S1	SG	S1
PPPP*P*S*	A2	A2	S1	S1	SG	S1
PPP*P*P*S*	A2	S1	S1	S1	SG	S1
PP*P*P*P*S*	S1	S1	S1	S1	SG	S1

**Note:** All line key positions, as furnished, are pickup keys. To convert from pickup (locking) to signal (nonlocking) remove the P-10E837 screw from the plunger at the key position being converted.

\*These arrangements are used on private or intercommunicating lines with a common signal key.

**TABLE D**  
**PICKUP-SIGNAL KEY CONVERSION, 2664A3 TELEPHONE SET**

CONVERSION OPTIONS	599B KEY LEADS								
	(S-W)	(G-R)	(BL-BK)	(W-BR)	(Y-BL)	(BL-Y)	(BR-BK)	(O-Y)	(R-S)
HPPPPC	A2	A2	A2	4	†	†	A2	A2	†
HPPPSC	A2	A2	SG	4	†	†	A2	A2	†
HPPSSC	A2	SG	SG	4	†	†	A2	A2	†
HPPP*S*C	A2	S1	SG	S1	†	†	A2	A2	†
HPP*P*S*C	S1	S1	SG	S1	†	†	A2	A2	†
HPPPPC(1)	A2	A2	A2	4	†	†	SG	SG	†
HPPPPC(2)	A2	A2	A2	4	TB1-7†	A of net.†	†	†	†
HPPPPC(3)	A2	A2	A2	4	Buzzer Terminals		†	†	†
HPPPPC(4)	A2	A2	A2	4	†	†	†	†	†

**Note:** All line key positions, as furnished, are pickup keys. To convert from pickup (locking) to signal (nonlocking) remove the P-10E837 screw from the plunger at the key position being converted.

\*These arrangements are used on private or intercommunicating lines with a common signal key.

†Insulate and store.

‡Remove mounting cord (S-Y)(Y-S) leads, insulate and store.

Turnbutton used to:

- (1) Operate auxiliary relay [through 5th R and T (G-BK)(BK-G) pair].
- (2) Cut off ringer in set.
- (3) Cut off buzzer in set.
- (4) Cut off external audible signal [Connect 5th R and T (G-BK)(BK-G) pair to signal circuit; connect 6th R and T (Y-BL)(BL-Y) pair to external signal].

**TABLE E**  
**P-90D012 POLARITY GUARD CONNECTIONS**

	TEL SET LEADS			POLARITY GUARD LEADS	
	(W) SWITCH HOOK	(G-W) DIAL	(BK) DIAL	(W)	(G)
Remove From	C of network		RR of network	—	—
Connect To	S of polarity guard		T of polarity guard	C of network	RR of network

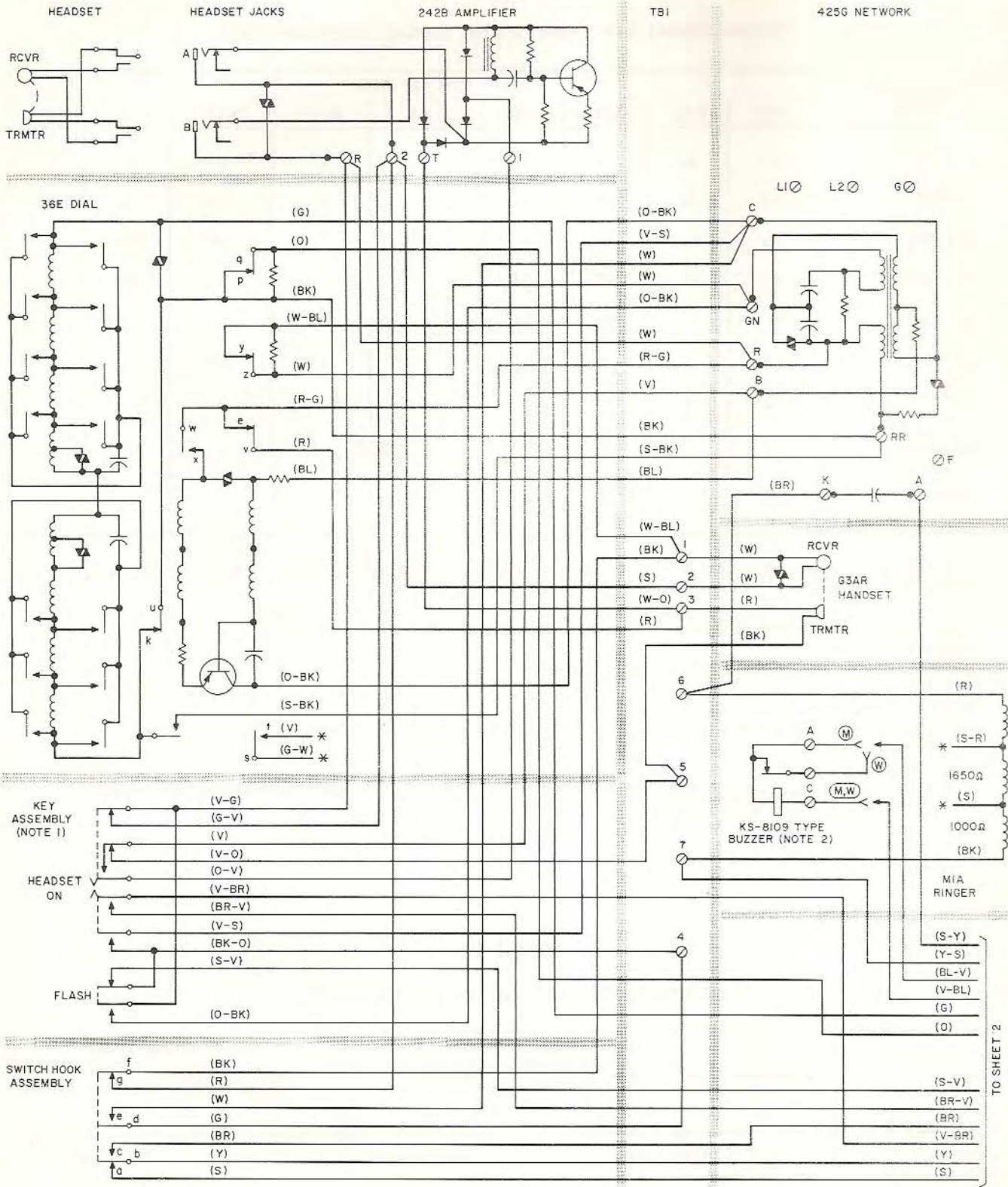


Fig. 1 — 2664-Type Telephone Sets, Connections (Sheet 1 of 3)

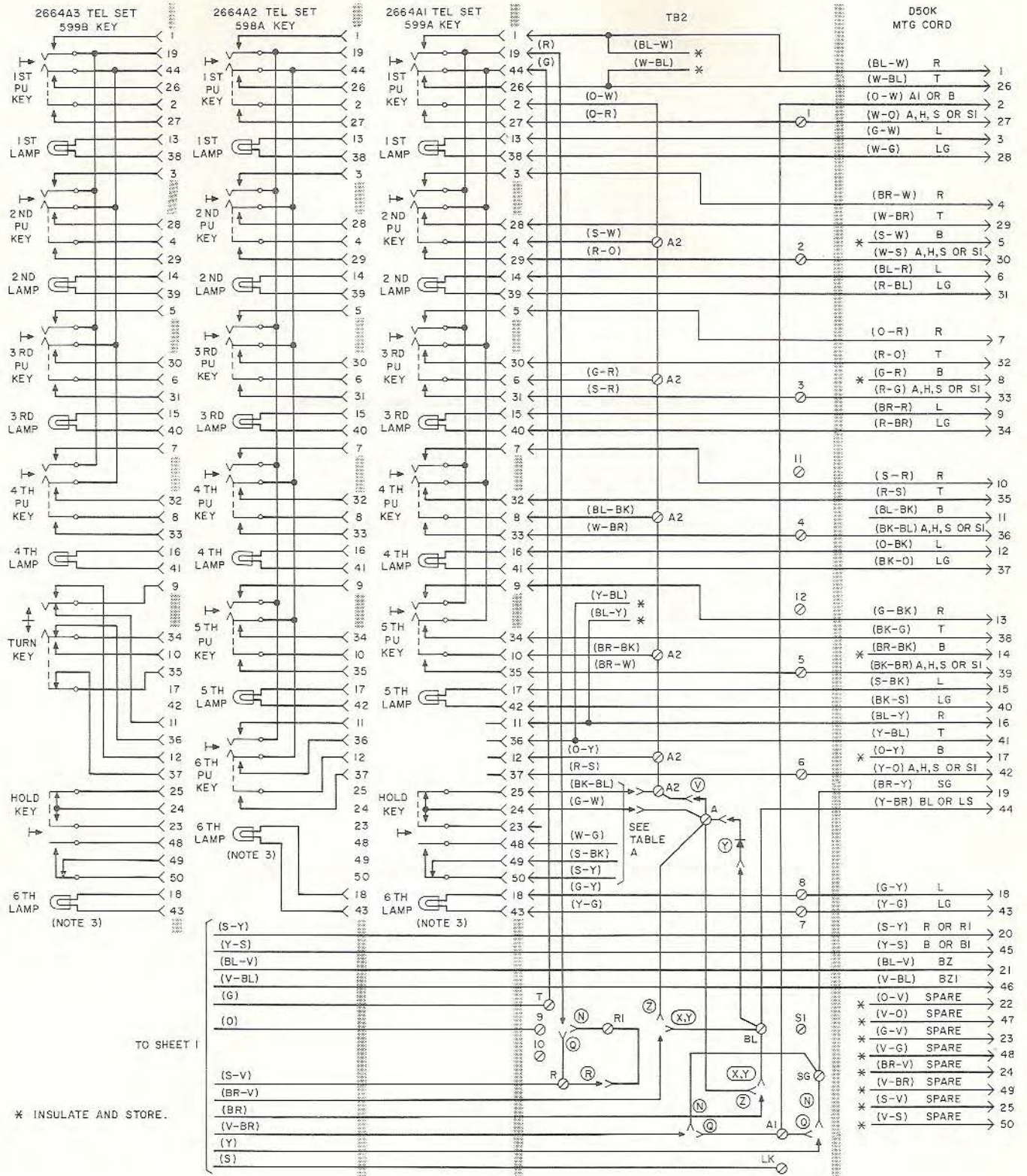


Fig. 1 — 2664-Type Telephone Sets, Connections (Sheet 2 of 3)

NOTES:

1. THE ON POSITION OF HEADSET KEY TRANSFERS THE TALKING CIRCUIT FROM HANDSET TO HEADSET. THE FLASH CONTACTS ARE OPERATED BY DEPRESSING THE KEY.
2. WHEN A KS-8109 TYPE BUZZER IS PROVIDED, CONNECT BZ (BL-V) AND BZ1 (V-BL) TO TERMINALS OF BUZZER. BE SURE BUZZER IS INSULATED FROM BASE OF SET.
3. TO USE 6TH LAMP, EQUIP KEY WITH PROPER LAMP AND CONNECT ASSOCIATED LEADS AT EQUIPMENT OR DISTRIBUTION TERMINAL AS REQUIRED.

- Ⓜ AC OPERATION
- Ⓦ DC OPERATION
- Ⓝ IA KEY TELEPHONE SYSTEM
- Ⓧ IA WITH BUSY LAMP
- Ⓡ IA WITHOUT HOLD KEY, (598A KEY)
- Ⓠ IA1 AND IA2 KEY TELEPHONE SYSTEMS
- Ⓨ IA1 AND IA2 WITH STATION BUSY LAMP (KS-15724, LI DIODE)
- Ⓩ IA1 AND IA2 WITHOUT STATION BUSY LAMP
- Ⓥ IA1 AND IA2 WITHOUT HOLD KEY, (598A KEY)

Fig. 1 — 2664-Type Telephone Sets, Connections (Sheet 3 of 3)

TABLE F

## CONDUCTOR ASSIGNMENTS USING 66E-TYPE CONNECTOR BLOCK OR A25B CONNECTOR CABLE

LEAD DESIG	TEL SET TERM.*	MTG CORD OR A25B CONN CABLE		PLUG OR CONN	66E-TYPE CONN BLOCK
		PAIR NO.	CONDUCTOR COLOR	PIN NO.	CLIP TERM. NO.
T	26	1	W-BL	26	1
R	1		BL-W	1	2
A,H,S, or S1	TB2-1	2	W-O	27	3
A1 or B†	TB2-A1		O-W	2	4
LG	38	3	W-G	28	5
L1	13		G-W	3	6
T	28	4	W-BR	29	7
R	4		BR-W	4	8
A,H,S, or S1	TB2-2	5	W-S	30	9
Spare or B†	‡		S-W	5	10
LG	39	6	R-BL	31	11
L2	14		BL-R	6	12
T	30	7	R-O	32	13
R	5		O-R	7	14
A,H,S, or S1	TB2-3	8	R-G	33	15
Spare or B†	‡		G-R	8	16
LG	40	9	R-BR	34	17
L3	15		BR-R	9	18
T	32	10	R-S	35	19
R	7		S-R	10	20
A,H,S, or S1	TB2-4	11	BK-BL	36	21
Spare or B†	‡		BL-BK	11	22
LG	41	12	BK-O	37	23
L4	16		O-BK	12	24
T	34	13	BK-G	38	25
R	9		G-BK	13	26
A,H,S, or S1	TB2-5	14	BK-BR	39	27
Spare or B†	‡		BR-BK	14	28
LG	42	15	BK-S	40	29
L5	17		S-BK	15	30
T	36	16	Y-BL	41	31
R	11		BL-Y	16	32
A,H,S, or S1	TB2-6	17	Y-O	42	33
Spare or B†	‡		O-Y	17	34
LG	TB2-7	18	Y-G	43	35
L6	TB2-8		G-Y	18	36
BL or LS	TB2-BL	19	Y-BR	44	37
SG	TB2-SG		BR-Y	19	38
B or B1	TB1-7	20	Y-S	45	39
R or R1	A of net		S-Y	20	40
Spare	‡	21	V-BL	46	41
Spare	‡		BL-V	21	42
Spare	‡	22	V-O	47	43
Spare	‡		O-V	22	44
Spare	‡	23	V-G	48	45
Spare	‡		G-V	23	46
Spare	‡	24	V-BR	49	47
Spare	‡		BR-V	24	48
Spare	‡	25	V-S	50	49
Spare	‡		S-V	25	50

\*Contacts of key plug unless otherwise noted.

†When set is used in 1A key telephone system, these balance leads must not be used for other purposes.

‡Insulate and store.