

SERVICE

660-TYPE TELEPHONE SETS

1. GENERAL

1.01 These sets are supplied factory wired as a 660A1 only. Modification kits are available for field conversion of the basic set to provide exclusion. For ordering and installation information refer to the appropriate Reference section in Division 502.

1.02 Connection information was formerly found in Section 502-660-400 which will be canceled.

1.03 For speakerphone connections refer to Division 512.

PLANT SERIES	PLANT SERIES	PLANT SERIES	PLANT SERIES	PLANT SERIES	PLANT SERIES	PLANT SERIES	PLANT SERIES	PLANT SERIES
1	2	3	4	5	6	7	8	9
10	11	12	13	14	15	16	17	18
19	20	21	22	23	24	25	26	27
28	29	30	31	32	33	34	35	36
37	38	39	40	41	42	43	44	45
46	47	48	49	50	51	52	53	54
55	56	57	58	59	60	61	62	63
64	65	66	67	68	69	70	71	72
73	74	75	76	77	78	79	80	81
82	83	84	85	86	87	88	89	90
91	92	93	94	95	96	97	98	99
100	101	102	103	104	105	106	107	108

TABLE A

LINE AND RINGER CONNECTIONS — 660A1 TELEPHONE SET

WIRE OR LEAD		INDIV OR BRIDGED	RING PARTY	TIP PARTY			1A1 OR 1A2 KEY TEL SYSTEM (NOTE)
				NO IDENT GROUND	IDENTIFYING GROUND		
					1000Ω	2650Ω	
Line Wire	Tip	1	1	1	1	1	1
	Ring	2	2	2	2	2	2
	Grd A1	5*	5	5	5	5	5
	A						4
Mounting Cord	G	1	1	2	2	2	1
	R	2	2	1	1	1	2
	Y	1	5	5	5	5	5
	BK	4	4	4	4	4	4
Mounting Cord in Set	G	L1	L1	L1	L1	L1	L1
	R	L2	L2	L2	L2	L2	L2
	Y	G†	G†	G†	G†	G†	2
	BK	1	1	1	1	1	1
Ringer Leads	R	7	7	7	7	7	7
	BK	8	8	8	8	8	8
	S	9	9	9	9	9	9
	S-R	10	10	10	10	10	10
Ringer Straps	R	L2	L2	L2	K	B	L2
	BK	G	G	G	G	B	C
	S	K	K	K	B	K	K
	S-R	A	A	A	B	G	A
Line Switch	S	L2	L2	L2	A†	A†	2
	[S-W] (Y)	L2	L2	L2	L2	L2	2
	[S-G] (BR)	C†	C†	C†	C†	C†	1
	[S-Y] (G)	L1	L1	L1	L1	L1	L2

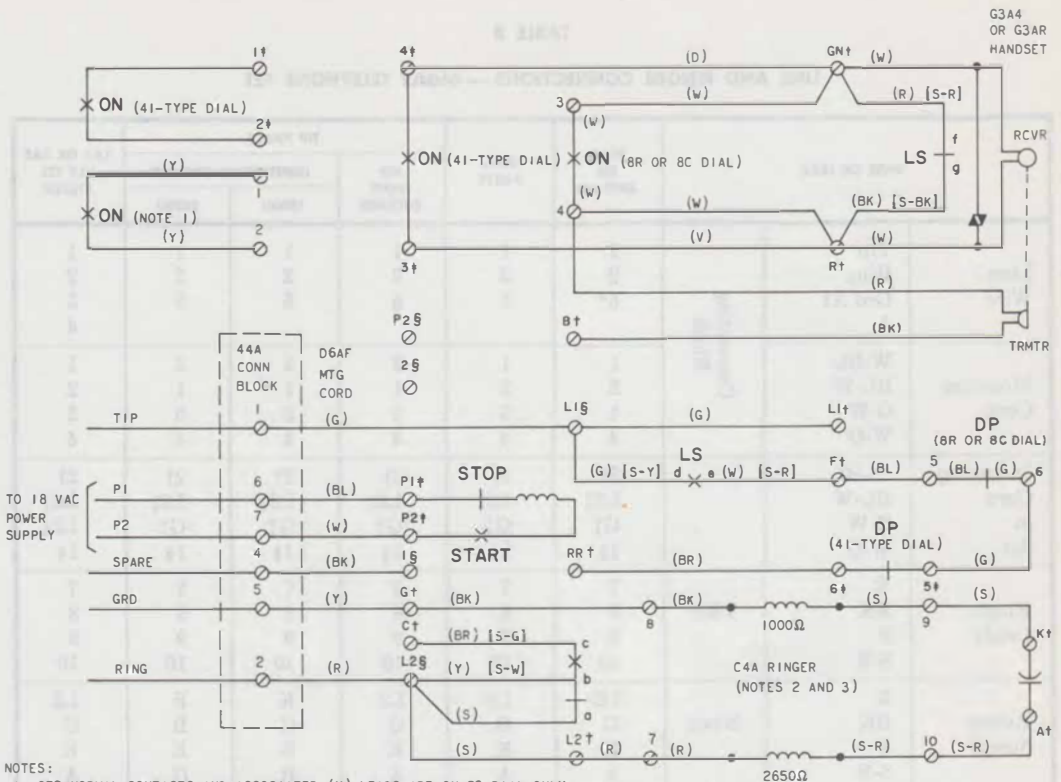
* Ground may be omitted if not required for service. Not required for protection of 41-type dial power supply.

† Terminals on network.

() Current color code.

[] MD color code.

Note Move (G) strap from L1 of network to C of network.



NOTES:

1. OFF-NORMAL CONTACTS AND ASSOCIATED (Y) LEADS ARE ON 8C DIAL ONLY.
2. IF CAPACITOR IS NOT REQUIRED IN RINGER CIRCUIT MOVE (S) RINGER LEAD TO TERMINAL 10 ON TB2. FOR LINE AND RINGER CONNECTIONS REFER TO TABLE A.
3. TO SILENCE RINGER PERMANENTLY MOVE (R) RINGER LEAD TO TERMINAL 10 AND (BK) RINGER LEAD TO TERMINAL 9 OF TB2.
4. LINE SWITCH SEQUENCE:
 - bc - MAKES
 - de - MAKES
 - ab - BREAKS
 - fg - BREAKS

() - CURRENT COLOR CODE
 [] - MD COLOR CODE

† - NETWORK TERMINAL, UNDESIGNATED TERMINALS ARE ON TB2

‡ - TERMINAL ON 41-TYPE DIAL

§ - TERMINAL ON TB1

DP - DIAL PULSE CONTACTS

LS - LINE SWITCH

ON - DIAL OFF-NORMAL CONTACTS

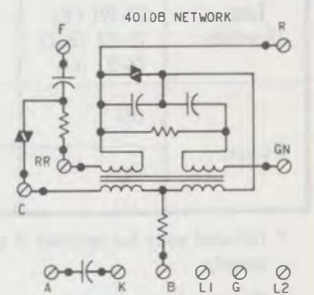


Fig. 1—660A1 Telephone Set, Connections

TABLE B

LINE AND RINGER CONNECTIONS — 660A2 TELEPHONE SET

WIRE OR LEAD		INDIV OR BRIDGED	RING PARTY	TIP PARTY			1A1 OR 1A2 KEY TEL SYSTEM	
				NO IDENT GROUND	IDENTIFYING GROUND			
					1000Ω	2650Ω		
Line Wire	Tip	1	1	1	1	1	1	
	Ring	2	2	2	2	2	2	
	Grd A1	5*	5	5	5	5	5	
	A						4	
Mounting Cord	W-BL	1	1	2	2	2	1	
	BL-W	2	2	1	1	1	2	
	O-W	1	5	5	5	5	5	
	W-O	4	4	4	4	4	4	
Mounting Cord in Set	W-BL	2†	2†	2†	2†	2†	2†	
	BL-W	L2‡	L2‡	L2‡	L2‡	L2‡	L2‡	
	O-W	G‡	G‡	G‡	G‡	G‡	L2§	
	W-O	1§	1§	1§	1§	1§	1§	
Ringer Leads	R	7	7	7	7	7	7	
	BK	8	8	8	8	8	8	
	S	9	9	9	9	9	9	
	S-R	10	10	10	10	10	10	
Ringer Straps	R	L2	L2	L2	K	B	L2	
	BK	G	G	G	G	B	C	
	S	K	K	K	B	K	K	
	S-R	A	A	A	B	G	A	
Line Switch	S	L2	L2	L2	A†	A†	L2	
	[S-W] (Y)	L2	L2	L2	L2	L2	L2	
	[S-G] (BR)	C†	C†	C†	C†	C†	1§	
	[S-Y] (G)	2†	2†	2†	2†	2†	L2‡	
Straps	(S)	L2§ to L2‡	L2§ to L2‡	L2§ to L2‡	L2§ to L2‡	L2§ to L2‡	L2§ to L2‡	1† to L2‡
	(W)	L2§ to 1†	L2§ to 1†	L2§ to 1†	L2§ to 1†	L2§ to 1†	L2§ to 1†	2† to C†

* Ground may be omitted if not required for service. Not required for protection of 41-type dial power supply.

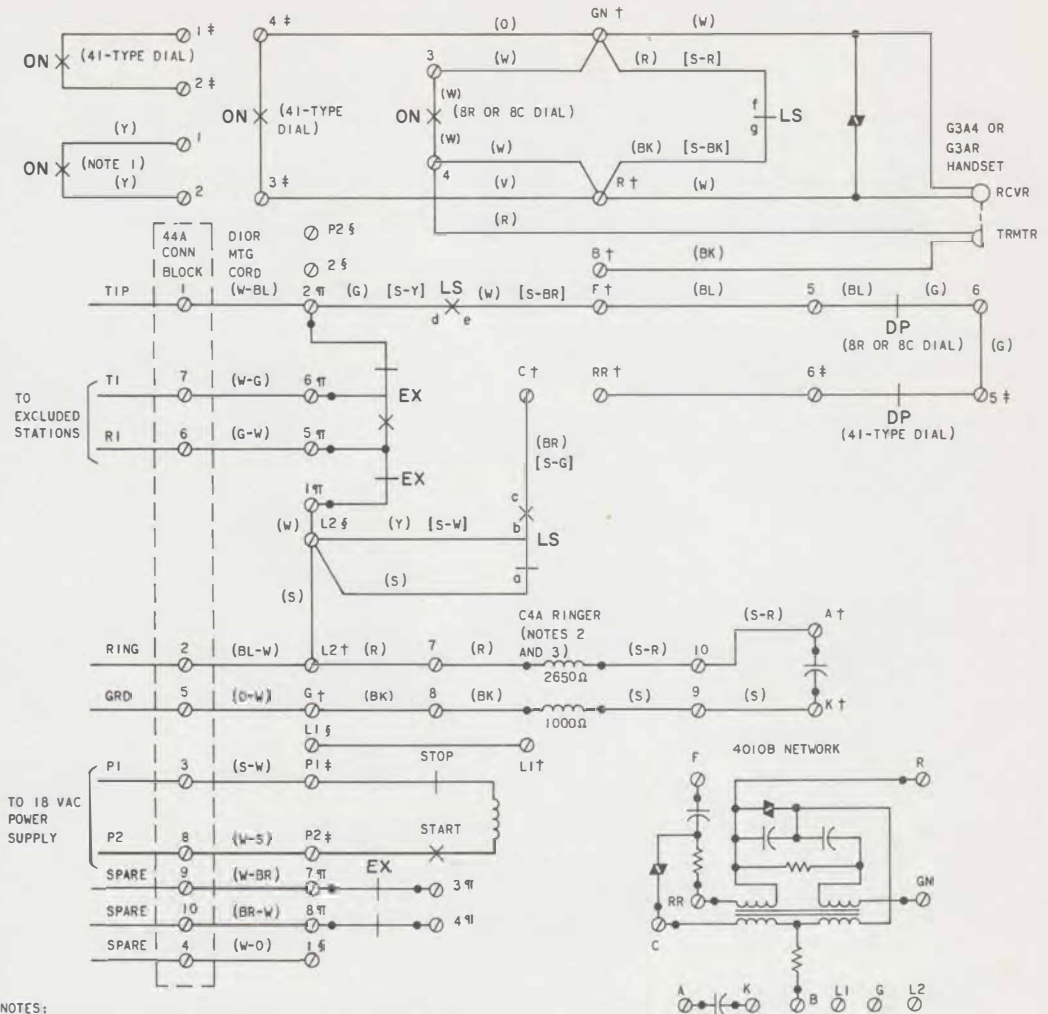
† Terminal on exclusion switch terminal board.

‡ Terminal on network.

§ TB1.

() Current color code.

[] MD color code.



- NOTES:
1. OFF-NORMAL CONTACTS AND ASSOCIATED (Y) LEADS ARE ON BC DIAL ONLY.
 2. IF CAPACITOR IS NOT REQUIRED IN RINGER CIRCUIT MOVE (S) RINGER LEAD TO TERMINAL 10 ON TB2. FOR LINE AND RINGER CONNECTIONS REFER TO TABLE B.
 3. TO SILENCE RINGER PERMANENTLY MOVE (R) RINGER LEAD TO TERMINAL 10 AND (BK) RINGER LEAD TO TERMINAL 9 OF TB2.
 4. LINE SWITCH SEQUENCE:
 bc - MAKES
 de - MAKES
 ab - BREAKS
 fg - BREAKS

† - NETWORK TERMINAL, UNDESIGNATED TERMINALS ARE ON TB2
 ‡ - TERMINAL ON 41-TYPE DIAL
 § - TERMINAL ON TB1
 ¶ - TERMINAL ON EXCLUSION SWITCH ASSEMBLY
 () - CURRENT COLOR CODE
 [] - MD COLOR CODE
 DP - DIAL PULSE CONTACTS
 EX - EXCLUSION SWITCH
 LS - LINE SWITCH
 ON - DIAL OFF-NORMAL CONTACTS

Fig. 2—660A2 Telephone Set, Connections