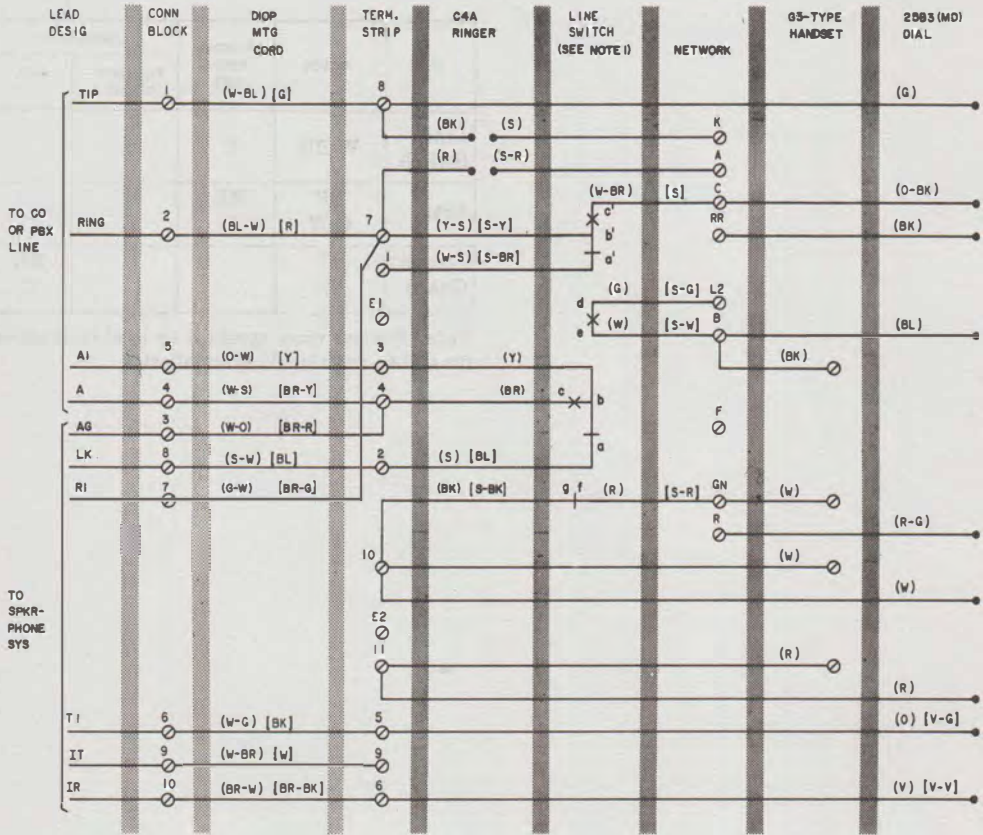


SERVICE  
1500S TELEPHONE SETS



- NOTES:
- CONTACTS D, E AND ASSOCIATED LEADS WERE NOT PROVIDED ON SETS OF EARLIER MANUFACTURE.
  - LINE SWITCH SEQUENCE, HANDSET REMOVED.
    - (1) bc MAKES                      (3) ab AND a' b' BREAKS
    - (2) de AND b' c' MAKES        (4) gf BREAKS
- ( ) CURRENT COLOR CODE.  
[ ] MD COLOR CODE.

TABLE A  
RINGER CONNECTIONS

LEAD	COLOR	INDIVIDUAL OR BRIDGED	RING PARTY	TIP PARTY (NO. IDENT. GRD)
RINGER	(R) (BK)	7 8	7 3	3 8

Fig. 1—1500S Telephone Set Connections, With 25B3 (MD) Dial and 425E or 425G Network, Wired for Speakerphone

1. GENERAL

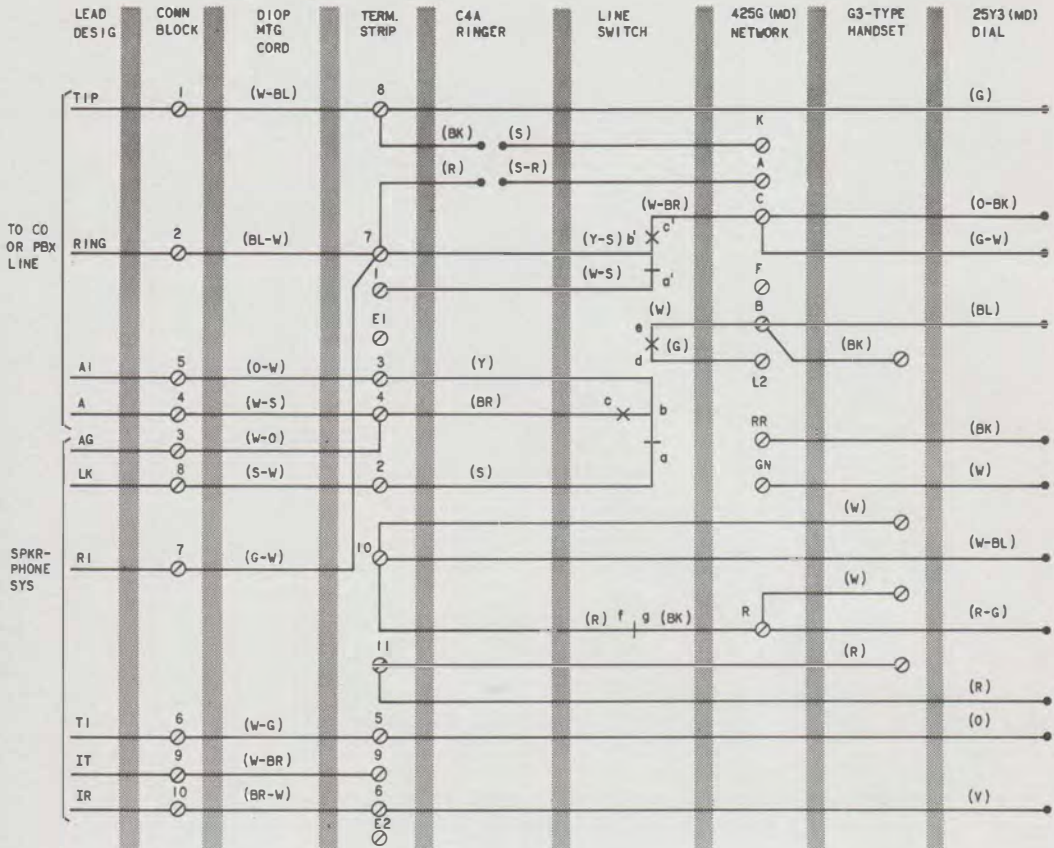
1.01 Reissued to add nontechnical changes to Fig. 1, 2 and Table B.

TABLE B

POLARITY GUARD CONNECTIONS  
(P-90D052 GUARD ASSEMBLY)

LEAD	COLOR	REMOVE FROM NET.	CONNECT TO	
			POLARITY GUARD	NET.
Line Switch	W-BR	C	S	
Dial	BK G-W	RR C	T S	
Polarity Guard	G W			RR C

**Note:** For use when specified by local instructions for end-to-end signaling installation.

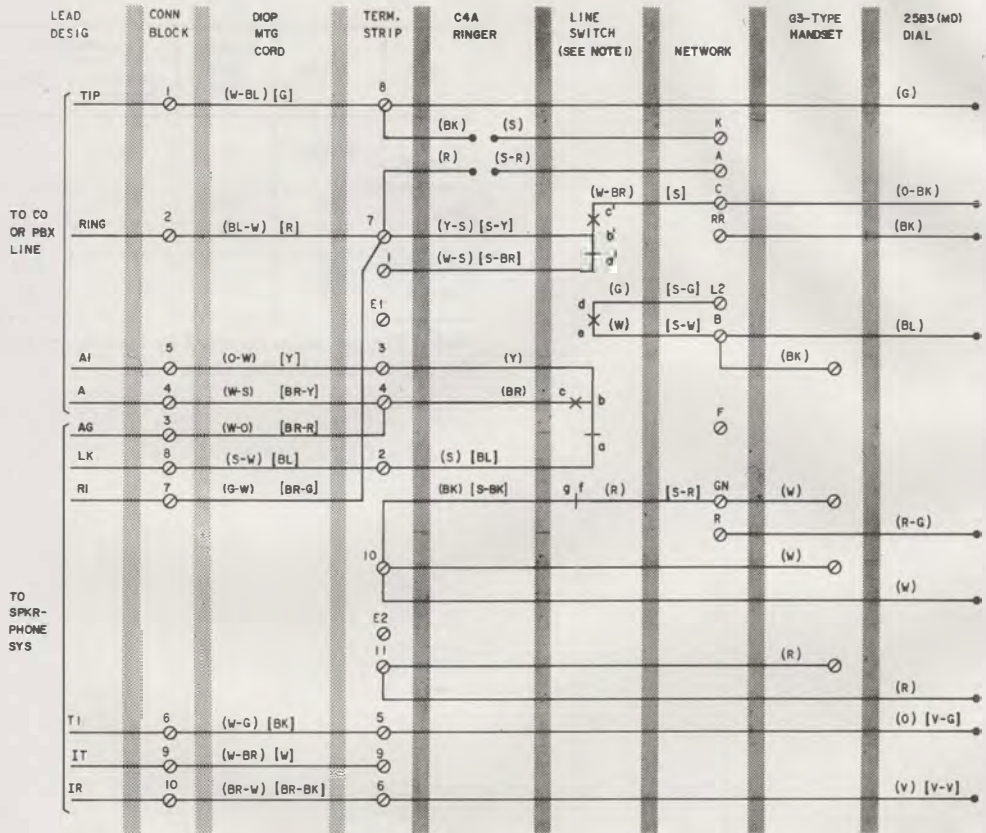


NOTE: LINE SWITCH SEQUENCE, HANDSET REMOVED  
 (1) bc MAKES (3) ab AND a' b' BREAKS  
 (2) de AND b' c' MAKES (4) gf BREAKS

Fig. 2—1500S Telephone Set Connections, With 25Y3 (MD) Dial and 425G Network, Wired for Speakerphone

## SERVICE

### 1500S TELEPHONE SETS



**NOTES:**

1. CONTACTS D, E AND ASSOCIATED LEADS WERE NOT PROVIDED ON SETS OF EARLIER MANUFACTURE.
2. LINE SWITCH SEQUENCE, HANDSET REMOVED.
  - (1) bc MAKES (3) ab AND a' b' BREAKS
  - (2) de AND b' c' MAKES (4) gf BREAKS

( ) CURRENT COLOR CODE.  
[ ] MD COLOR CODE.

TABLE A  
RINGER CONNECTIONS

LEAD	COLOR	INDIVIDUAL OR BRIDGED	RINGER PARTY	TIP PARTY (NO. IDENT. GRD)
RINGER	(R) (BK)	7 8	7 3	3 8

**Fig. 1—1500S Telephone Set Connections, With 25B3 (MD) Dial and 425E or 425G Network, Wired for Speakerphone**

1. GENERAL

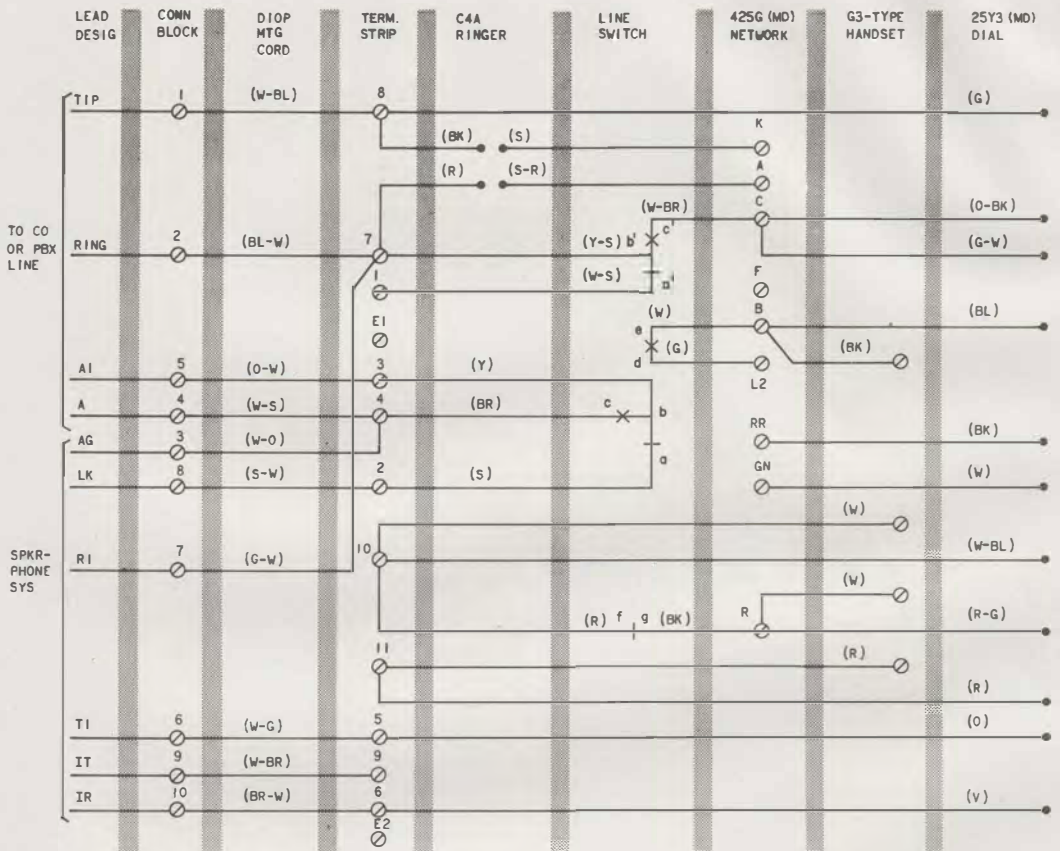
1.01 Reissued to add nontechnical changes to Fig. 1, 2 and Table B.

TABLE B

**POLARITY GUARD CONNECTIONS  
(P-90D052 GUARD ASSEMBLY)**

LEAD	COLOR	REMOVE FROM NET.	CONNECT TO	
			POLARITY GUARD	NET.
Line Switch	W-BR	C	S	
Dial	BK G-W	RR C	T S	
Polarity Guard	G W			RR C

*Note:* For use when specified by local instructions for end-to-end signaling installation.



NOTE: LINE SWITCH SEQUENCE, HANDSET REMOVED  
 (1) bc MAKES (3) ab AND a' b' BREAKS  
 (2) de AND b' c' MAKES (4) gf BREAKS

Fig. 2—1500S Telephone Set Connections, With 25Y3 (MD) Dial and 425G Network, Wired for Speakerphone